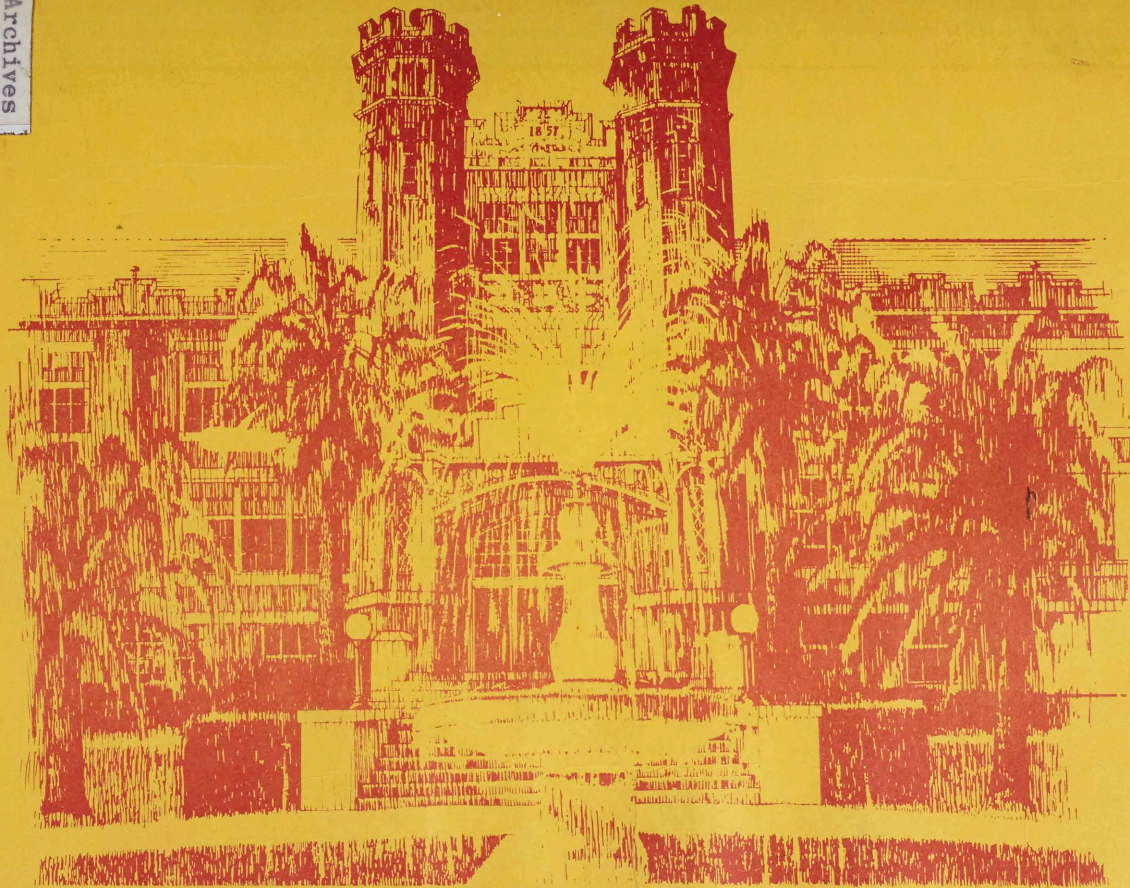


Archives
1D
1771
R892
A46
1977



Florida State University Fact Book 1977

FLORIDA STATE UNIVERSITY FACT SHEET

 SP C
 ARCHIVES
 F.S.U. LIBRARY

1857

ENROLLMENT, FALL QUARTER, 1977

Date of Founding:

Field of Study	Undergraduate	Graduate	President:	Dr. Bernard F. Sliger
Arts & Sciences	3,109	905	Location:	Tallahassee, Fla.
Business	3,744	169	Type:	Public, Coeducational
Communication	686	127	Degrees Conferred	
Criminology	922	83	Fall '76 through Summer '77	5,799
Dance	70	6	Total Alumni Since 1857:	88,558
Education	1,677	1,096	Main Campus Acreage:	344
Home Economics	804	103	Investment in	
Interdivisional Programs	14	23	Physical Plant:	\$150 million
Library Science	24	136	No. of Residence Halls:	15
Law	---	530	Students Housed On Campus:	7,500
Music	619	180	Construction Planned or	
Nursing	576	---	In Progress, 1977-1981	\$54 million
Special Students	1,154	---		
Social Sciences	755	371		
Social Work	294	226		
Theater	198	102		
Undeclared	1,410	---		
Visual Arts	706	80		

Class Enrollment

Freshmen	2,644
Sophomores	3,044
Juniors	4,995
Seniors	4,667
Graduate Students	4,136
Unclassified	1,413
Men	10,186
Women	10,713

 Full & Part-Time Personnel: 6,400
 (Includes students and OPS) (+ or -)

UNIVERSITY LIBRARIES

Bound Volumes:	1,211,874
Serials (Subscr.):	12,646
Microform Units:	1,371,328
Photo Archives:	107,511
Audio Recordings:	14,934
Maps & Charts:	114,101
Documents:	654,845

TOTAL HEAD COUNT: 20,899

UNIVERSITY BUDGETS AND PERSONNEL--1977-78 FISCAL YEAR

Category of Revenue	Amount	Percent of Budget	Number of Full-Time Equivalent* Positions	Career Service
			Faculty	Adm/Prof
Education and General	\$ 58,062,432	57.9	1,079.18	137.88
Agency	\$ 1,993,348	2.0	----	8.75
Athletics	\$ 2,596,643	2.6	----	26.25
Auxiliaries, Working Cap.	\$ 18,023,202	18.0	----	46.00
Contracts and Grants	\$ 18,478,990	18.4	107.52	13.07
Extension, Incidental	\$ 1,146,287	1.1	10.00	6.00
TOTALS:	\$100,300,902	100.0	1,196.70	237.95

 1,224.35
 42.00
 20.00
 641.15
 205.84
 12.00

*Total FTE Faculty and Staff: 3,579.99

THE FLORIDA STATE UNIVERSITY
FACT BOOK

FOREWORD

This year's version of the Florida State University Fact Book should hopefully prove useful, time-saving and informative. We have presented the data in six sections: academic program information, student information, staff information, financial information, general information and library information. The sources of the data have been indicated on each table and where possible the information is from official files submitted to the Board of Regents.

Should you have any questions or comments, please do not hesitate to call us. The responsibility for the sections was as follows: student information: Ms. Betty Tilton, financial: Mr. Rafael Alvarez, all other sections: Mr. John Kalb. The decision on inclusion of tables was based on information requests received by this Office since its establishment in March 1976.

Ilona Turrisi

Ilona Turrisi
Director
Budget and Analysis

April 6, 1977

16 99 2357F1 24 950 12 XL

2516

TABLE OF CONTENTS

Page

FOREWORD

SECTION I	1
Table I-1. Degrees Awarded by Schools and Colleges	3
Table I-2. Approved Degree Programs	6
Table I-3. Doctoral Programs Offered in Cooperation with Other State Universities	11
Table I-4. The Academic Common Market	12
Table I-5. Primary Academic and Research Support Areas of Florida State University	16
Table I-6. FSU Academic Programs, Course Prefixes, Academic Disciplines, and HEGIS Codes	19
Table I-7. Cooperative Education	31
Table I-8. The Center for Professional Development and Public Service	34
Graph I-8-A. Numbers of Continuing Education Units Generated by Source of Non-Credit Programs	36
Graph I-8-B. Total Instructional Faculty Participation	37
Graph I-8-C. Number of Participants Served by Program Initiation Source	38
Table I-9. Office of Summer Sessions and Continuing Studies	39
SECTION II	40
Table II-1. State Fundable Student Credit Hour Enrollment by School and Department, Fall Quarters	44
Table II-2. State Fundable Student Credit Hours by School and Department, Four Quarter Average	65
Table II-3. Geographical Origin of FSU Students by Florida County, Fall 1976	86

TABLE OF CONTENTS (continued)

	Page
SECTION II (continued)	
Map II-3. Contribution by Counties Headcount Students, Fall 1976 .	87
Table II-4. First Time in College Students by Florida County, Fall 1976	88
Map II-4-A. Number of 1975-76 Florida High School Graduates-- Attending FSU as First Time in College Students, Fall 1976 (by county)	89
Map II-4-B. Percentage of 1975-76 Florida High School Graduates Attending FSU as First Time in College Students, Fall 1976 (by county)	90
Table II-5. Destination of 1975-76 Florida High School Twelfth Grade Graduates Continuing Their Education	91
Table II-6. FSU Percentage of 1975-76 Florida High School Graduates Continuing Their Education at any University Inside or Outside of Florida, by County	94
Table II-7. FSU Percentage Share of 1975-76 Florida High School Graduates Continuing Their Education in the State University System of Florida by County	95
Map II-7. Percent of High School Graduates, 1975-76 Going into the State University System that are Enrolled at FSU	96
Table II-8. FSU Percentage Share of 1975-76 Florida High School Graduates Continuing Their Education (University, Junior College, Technical-Trade School) by County . . .	97
Table II-9. Florida Community/Junior College Students Transferring to FSU, Fall Quarters Headcount Enrollment and Per Cent of Total Junior College Transfers	98
Table II-10. U.S. Sources of FSU Enrollment Fall, 1976	100
Map II-10. Enrollment and Percent Contribution to FSU Total Enrollment by State	101

TABLE OF CONTENTS (continued)

	Page
SECTION II (continued)	
Table II-11. Fall Quarter, 1976--International Students-- Country of Origin	102
Table II-12. Rank Order of Undergraduate Majors at FSU, Fall 1976	103
Table II-13. Rank Order of Graduate Majors at FSU, Fall 1976	106
Table II-14. Percentage Distribution of FSU Credit Hours by Level, 1975-76	109
Table II-15. FSU Student Credit Hours as a Percentage of the Total State University System Credit Hours at Each Level of Each Discipline, 1975-76	110
Table II-16. FSU Student Credit Hours as a Percent of the Total State University System Credit Hours, 1975-76	111
SECTION III	112
Table III-1. Average Nine and Twelve Month Salaries by College and Rank	114
Table III-2. Comparison of Budgeted Positions, by Pay Plan for the Education and General (State) Budget (Faculty	124
Table III-3. Comparison of Budgeted Positions, by Pay Plan for the Education and General (State) Budget, and for the Auxiliary Enterprises Budget (other pay plans) . . .	125
Table III-4. Staffing Pattern of the Academic Schools by Faculty Rank for Nine and Twelve-Month Positions	126
Table III-5. 1976-77 Tenured Faculty by Department as of January 1, 1977	147

TABLE OF CONTENTS (continued)

	Page
SECTION III (continued)	
Table III-6. Comparison of Tenure with Budgeted Lines, 1976-77	152
Table III-7. 9-Month Faculty Salaries, Full Time by Rank	154
Map III-8. Location of Institutions Conferring the Highest Degree to FSU Faculty	155
Table III-9. Institutions Providing Five or More Ranked FSU Faculty Members with Their Highest Degree	156
SECTION IV 157	
Table IV-1. Analysis of Income: Sources of Income by Major Revenue Classification	158
Table IV-2. Analysis of Expenditures: Disbursements of Funds by Major Classification	159
Table IV-3. Actual Operating Expenditures	160
Table IV-4. Education and General Budgeted FTEs and Dollars	161
SECTION V 162	
Table V-1. Presidents of the University Since 1909	163
Table V-2. Honorary Degrees Conferred	164
Table V-3. AMOCO Awards	168
SECTION VI 170	
Table VI-1. Library Statistics	171

SECTION I

The data in this section are related to academic programs at Florida State University.

TABLE I-1. Degrees Awarded by Schools and Colleges. This table summarizes degrees by type which have been awarded by FSU Schools and Colleges for the last seven years. The summer quarter precedes the other three quarters in an academic year.

TABLE I-2. Approved Degree Programs. This table of approved degree programs was provided by the Dean of Faculties Office. It indicates approved programs and not necessarily those in which degrees are currently awarded. Some of these programs are in the implementation stage at present.

TABLE I-3. Doctoral Programs Offered in Cooperation with other State Universities. This table lists five programs currently shared with other schools within the State University System. Of the five, three are authorized at FSU and two at the University of Florida.

TABLE I-4. Academic Common Market. This table lists programs at other Southern region universities for which Florida residents may apply for admittance as resident students. These are programs not available locally for residents of the states involved in the Common Market area and are made available on a competitive basis among residents of the region. Page 4 of this table lists the programs at Florida State University that are offered as part of the Academic Common Market program.

TABLE I-5. Primary Academic and Research Support Areas. This table summarizes the academic and research areas of Florida State University as they are currently structured in schools and colleges. For a more complete list of programs, see Table V-5.

TABLE I-6. FSU Academic Programs, Course Prefixes, Academic Disciplines and Hegis Codes. This table lists the different academic programs of Florida State University as they are subdivided by the Higher Education General Information Survey (HEGIS) codes. These codes group academic areas of similar natures together in groups called disciplines. The course prefix used at FSU is also included in this table.

TABLE I-7. Cooperative Education. This table describes the Cooperative Education program at FSU and lists major fields of study available through Cooperative Education.

TABLE I-8. The Center for Professional Development and Public Service. This table describes educational opportunities available through the Center and summarizes the activity as related to academic divisions.

TABLE I-9. Office of Summer Sessions and Continuing Studies. This table describes activity at FSU in continuing studies programs throughout the state.

THE FSU FACT BOOK
Table I-1
DEGREES AWARDED BY SCHOOLS AND COLLEGES

	1969-70	1970-71	1971-72	1972-73	1973-74	1974-75	1975-76
COLLEGE OF ARTS & SCIENCES-TOTALS							
Baccalaureate Degree	717	660	695	690	804	772	671
Master Degree	215	241	214	229	237	215	191
Doctoral Degree	133	123	152	128	137	122	128
SCHOOL OF BUSINESS-TOTALS							
Baccalaureate Degree	612	629	617	644	669	665	843
Master Degree	120	153	176	158	119	94	77
Doctoral Degree	4	5	6	10	12	10	11
COLLEGE OF EDUCATION-TOTALS							
Baccalaureate Degree	864	863	879	848	814	709	613
Master Degree	325	350	325	421	402	361	339
Advanced Master Degree	2	4	4	5	3	20	29
Doctoral Degree	96	120	133	145	119	155	112
COLLEGE OF HOME ECONOMICS-TOTALS							
Baccalaureate Degree	217	184	215	225	237	263	219
Master Degree	19	14	17	19	20	57	67
Doctoral Degree	12	5	7	10	11	5	15
SCHOOL OF LIBRARY SCIENCE-TOTALS							
Baccalaureate Degree	36	24	27	29	35	36	26
Master Degree	118	153	166	195	191	166	131
Advanced Master Degree	13	12	13	11	13	6	9
Doctoral Degree	0	0	7	6	5	11	7
SCHOOL OF NURSING-TOTALS							
Baccalaureate Degree	100	97	130	128	289	149	131
Master Degree	0	0	0	0	0	0	0

THE FSU FACT BOOK

DEGREES AWARDED BY SCHOOLS AND COLLEGES

	1969-70	1970-71	1971-72	1972-73	1973-74	1974-75	1975-76
SCHOOL OF CRIMINOLOGY-TOTALS							
Baccalaureate Degree	236	228	288	262	320	281	300
Master Degree	15	35	31	17	23	26	26
Doctoral Degree	2	1	2	3	0	4	3
COLLEGE OF LAW-TOTALS							
Juris Doctor Degree	91	82	150	148	181	161	129
COLLEGE OF SOCIAL SCIENCES-TOTALS							
Baccalaureate Degree	276	260	276	244	306	346	293
Master Degree	70	98	103	114	115	142	113
Doctoral Degree	17	25	13	18	23	33	14
SCHOOL OF SOCIAL WORK-TOTALS							
Baccalaureate Degree	130	116	165	143	141	135	151
Master Degree	91	80	111	82	91	104	109
COLLEGE OF COMMUNICATIONS-TOTALS							
Baccalaureate Degree	48	66	79	94	154	172	174
Master Degree	20	8	12	9	42	51	71
Doctoral Degree	2	3	4	9	9	12	10
SCHOOL OF MUSIC-TOTALS							
Baccalaureate Degree	102	124	107	112	114	117	133
Master Degree	38	42	66	63	41	48	98
Doctoral Degree	19	21	30	27	22	16	16
DEPARTMENT OF DANCE-TOTALS							
Baccalaureate Degree	--	--	--	--	4	6	13
Master Degree	--	--	--	--	5	5	5

THE FSU FACT BOOK

DEGREES AWARDED BY SCHOOLS AND COLLEGES

	1969-70	1970-71	1971-72	1972-73	1973-74	1974-75	1975-76
SCHOOL OF THEATRE-TOTALS							
Baccalaureate Degree	23	14	15	20	27	34	46
Master Degree	7	3	10	20	34	45	41
Doctoral Degree	1	6	5	6	4	5	1
SCHOOL OF VISUAL ARTS-TOTALS							
Baccalaureate Degree	127	99	136	153	198	170	202
Master Degree	29	44	38	25	31	29	54
Doctoral Degree	0	5	2	1	4	2	0
UNIVERSITY TOTALS							
Baccalaureate Degrees	3488	3364	3629	3592	4112	3855	3815
Masters Degrees	1067	1221	1269	1352	1351	1343	1322
Advanced Masters Degrees	15	16	17	16	16	26	38
Juris Doctor Degrees	91	82	150	148	181	161	129
Doctoral Degrees	286	314	361	363	346	375	317
TOTAL	4947	4997	5426	5471	6006	5760	5621

Source: Summer 1975-Spring 1976 Student Data Course File.

THE FSU FACT BOOK

Table I-2

APPROVED DEGREE PROGRAMS

DIVISION I	<u>Bachelors</u>	<u>Masters</u>	<u>Doctorate</u>
Asian Studies	X(1)	X(1)	
American Studies	X(1)	X(1)	
Inter-American Studies	X(1)		
Biological Science	X	X	X
Medical Technology	X		
French	X	X	X
German	X	X	
Italian	X		
Spanish	X	X	X
Russian	X		
Latin	X	X	
Greek	X	X	
Slavic Languages & Literature		X	
English	X	X	X
Comparative & World Literature	X		
Classics	X	X	
Religion	X	X	
Philosophy	X	X	X
Humanities	X	X	X
Mathematics	X	X	X
Statistics	X	X	X
Chemical Physics		X	X
Physics	X	X	X
Chemistry	X	X	X
Meteorology	X	X	X
Geology	X	X	X
Chemical Sciences	X		
Radiation Physics	X		

(1) with College of Social Sciences

THE FSU FACT BOOK

APPROVED DEGREE PROGRAMS

	<u>Bachelors</u>	<u>Masters</u>	<u>Doctorate</u>
DIVISION I (continued)			
Psychology	X	X	X
Oceanography		X	X
Anthropology	X	X	
History	X	X	X
Geophysical Fluid Dynamics			X
Molecular Biophysics			X
DIVISION II			
Business			
Accounting	X	X	
Finance	X	X	
Management	X	X	
Hotel & Restaurant Administration	X		
Marketing Management	X	X	
Risk Management and Insurance and Real Estate	X		
Multi-National Business Operation	X		
Business Ed. & Ofc. Management	X	X	
Pre-Law	X		
Business Administration		X	X
Education			
Childhood Education	X	X	X
Special Education	X	X	X
Instructional Development	X	X	X
Mathematics Education	X	X	X
Physical Education	X	X	X
Vocational & Industrial Arts Ed.	X	X	
Leisure Services & Studies	X	X	
Movement Science Education	X	X	X

THE FSU FACT BOOK

APPROVED DEGREE PROGRAMS

DIVISION II (continued)	<u>Bachelors</u>	<u>Masters</u>	<u>Doctorate</u>
Education			
Design & Management of Post Secondary Education	X	X	X
Language Education	X	X	X
Science & Human Affairs Ed.	X	X	X
Counseling, Health & Rehabilitation	X	X	X
Developmental Studies in Education		X	X
Educational Evaluation & Research Design		X	X
Design & Management of Elementary and Secondary School Systems		X	X
Nursing			
Nursing	X	X	
Home Economics			
General Home Economics	X		X
Clothing & Textiles	X	X	
Home & Family Life	X	X	
Food & Nutrition	X	X	
Home Economics Education	X	X	
Marriage & Family Living			X(3)
Library Science			
Librarianship, Library Science	X	X	X
(3) with Department of Sociology			

THE FSU FACT BOOK

APPROVED DEGREE PROGRAMS

	<u>Bachelors</u>	<u>Masters</u>	<u>Doctorate</u>
DIVISION III			
Asian Studies	X(2)		
American Studies	X(2)		
Inter-American Studies	X(2)		
Social Work	X	X	X
Criminology	X	X	X
Social Science	X	X	
Economics	X	X	X
Government	X	X	X
Geography	X	X	
Sociology	X	X	X
International Affairs	X	X	
Public Administration		X	
Criminology & Planning		X	
Planning/Urban & Regional Planning		X	X
Law			X
DIVISION IV			
Interior Design	X	X	
Communication	X	X	X
Advertising & Public Relations	X		
Creative Art	X	X	
History & Criticism of Art	X	X	X
Performance (Music)	X	X	X

(2) with College of Arts and Sciences

THE FSU FACT BOOK

APPROVED DEGREE PROGRAMS

	<u>Bachelors</u>	<u>Masters</u>	<u>Doctorate</u>
DIVISION IV (continued)			
Music (Interdivisional)	X(2)		
Music History & Literature	X	X	
Composition (Music)	X	X	X
Music Theory	X	X	X
Music Therapy	X	X	
Music Education	X	X	X
Opera Production		X	
Theatre	X	X	X
Dance	X	X	
Art Education & Constructive Design	X	X	X
Audiology and Speech Pathology	X	X	X
EDUCATIONAL SERVICES			
Slavic and E. European Studies	X	X	

(2) with College of Arts & Sciences

Source: Dean of Faculties Office

THE FSU FACT BOOK

Table I-3

DOCTORAL PROGRAMS OFFERED IN COOPERATION WITH OTHER STATE UNIVERSITIES

<u>PROGRAM</u>	<u>AUTHORIZED DOCTORAL PROGRAM</u>	<u>COOPERATING UNIVERSITY</u>
Anthropology	Florida	Florida State
Chemistry	Florida State	Florida Atlantic
Geography	Florida	Florida State
Government	Florida State	Florida Atlantic
Education	Florida State	West Florida

THE FSU FACT BOOK

Table I-4

THE ACADEMIC COMMON MARKET

This agreement among southern states makes possible the sharing of academic programs among residents of the southern region. Participating states can make arrangements for their residents who qualify to enroll in specified graduate programs in other states as in-state residents in participating institutions. Florida residents are eligible to participate in the following programs:

<u>PROGRAM</u>	<u>DEGREE</u>	<u>INSTITUTION</u>
Actuarial Science	Master of Actuarial Science Doctor of Philosophy	Georgia State University
Bioengineering	Master of Science	Clemson University
Coal Processing Research	Master of Science Doctor of Philosophy	Auburn University
Computer Science	Doctor of Philosophy	University of Maryland College Park
Dentistry	Master of Science	University of Alabama in Birmingham
Engineering Science (Biomedical Engineering Option)	Doctor of Philosophy	University of Tennessee
Environmental Health	Master of Science	East Tennessee State University
Expressive Therapies	Master of Arts	University of Louisville

THE FSU FACT BOOK
THE ACADEMIC COMMON MARKET

<u>PROGRAM</u>	<u>DEGREE</u>	<u>INSTITUTION</u>
Fisheries and Allied Aquacultures	Master of Science Doctor of Philosophy	Auburn University
German Language and Literature	Doctor of Philosophy	University of Tennessee
Marine Law and Science	Master of Marine Law and Science	University of Mississippi
Nutrition (Scientific)	Master of Nutrition Doctor of Philosophy	Clemson University
Occupational Safety and Health	Master of Science	Auburn University
Oral Biology	Master of Science	University of Alabama in Birmingham
Petroleum Engineering	Master of Science Doctor of Philosophy	Mississippi State University
Public Health and Epidemiology	Master of Science	University of Alabama in Birmingham
Safety	Master of Science Specialist in Education	University of Tennessee
Slavic Languages and Literatures	Doctor of Philosophy	University of Virginia
Textile Engineering	Doctor of Philosophy	Georgia Institute of Technology
Textile and Polymer Science	Doctor of Philosophy	Clemson University

THE FSU FACT BOOK
THE ACADEMIC COMMON MARKET
DEGREE

PROGRAM

INSTITUTION

Textile Science

Master of Science

Auburn University

Tropical Medicine and
Medical Parasitology

Master of Science
Doctor of Philosophy

Louisiana State University

Criminology

Home Economics

Microbiology

Multi-Campus University and College System

Music Performance

Music Therapy

Theatre Arts

Urban and Regional Planning

Source: Dean of Faculties Office

THE FSU FACT BOOK

THE ACADEMIC COMMON MARKET

The Programs at Florida State University designated as Academic Common Market Programs are:

Criminology

Home Economics

Meteorology

Multi-Campus University and College Systems

Music Performance

Music Therapy

Theatre Arts

Urban and Regional Planning

Source: Dean of Faculties Office

THE FSU FACT BOOK
Table I-5
PRIMARY ACADEMIC AND RESEARCH SUPPORT AREAS
OF FLORIDA STATE UNIVERSITY

DIVISION I - College of Arts & Sciences

Anthropology
Asian Studies
Biological Sciences
Program in Medical Sciences
Chemistry
Classics
English
Geology
History
American Studies
Mathematics
Modern Languages
Philosophy
Physics
Meteorology
Statistics
Psychology
Humanities
Oceanography
Religion
Geophysical Fluid Dynamics Institute
Institute for Molecular Biophysics
Nuclear Services
Psychobiology
Chemical Physics
Comparative and World Literature

DIVISION II - Professional Schools and
Colleges

College of Business
Hotel & Restaurant Administration
Accounting
Risk & Insurance
Management
Marketing
Finance
Business Administration

College of Education
Instructional Design and Development
Professional and Clinical Services
Educational Management Systems
Field Experiences

College of Home Economics
Clothing & Textiles
Food & Nutrition
Home & Family Life
Home Economics Education

School of Library Science

School of Nursing

Developmental Research School

THE FSU FACT BOOK
PRIMARY ACADEMIC AND RESEARCH SUPPORT AREAS

DIVISION III - Social Sciences & Law

School of Criminology

College of Law

College of Social Sciences

Economics

Geography

Urban & Regional Planning

Government

Public Administration

Sociology

Marriage & Family Living

International Affairs

Social Science

School of Social Work

Black Studies

Institute for Social Research

DIVISION IV - Communications & Fine Arts

College of Communications

Audiology & Speech Pathology

Speech Communications

Mass Communications

Instructional Communications

DIVISION IV - Communications & Fine Arts (cont.)

Dance

School of Music

School of Theatre

School of Visual Arts

Interior Design

Art

Art Education & Constructive Design

THE FSU FACT BOOK

PRIMARY ACADEMIC AND RESEARCH SUPPORT AREAS

DIVISION V - Graduate Studies & Research

The Graduate School

Edward Ball Marine Laboratory

Computing Center

Division of Sponsored Research

Academic Press

Lab Animal Resource Unit

Florida Resource & Environmental Analysis Center

EDUCATIONAL SERVICES

Center for Yugoslav-American Studies

Instructional Systems Development Center

Summer Sessions and Continuing Studies

International Programs

DEAN OF FACULTIES

THE FSU FACT BOOK

Table I-6

FSU ACADEMIC PROGRAMS, COURSE PREFIXES, ACADEMIC DISCIPLINES,
AND HEGIS CODES

	<u>Course Prefix</u>	<u>Academic Discipline</u>	<u>HEGIS Code</u>
COLLEGE OF ARTS AND SCIENCES			
Anthropology	ANY	Social Sciences	2202
Archaeology			2203
Biological Science	BIO	Biological Sciences	0401
Botany			0402
Developmental Biology			0427
Ecology & Evolution			0420
Genetics			0422
Marine Biology			0418
Microbiology			0411
Molecular Biophysics			0415
Parasitology			0403
Physiology			0410
Zoology			0407
Medical Science		Health Professions	1299
Medical Technology		Health Professions	1223
Chemistry	CEM	Physical Sciences	1905
Analytical Chemistry			1909
Biochemistry			1905
Inorganic Chemistry			1906
Nuclear Chemistry			1905
Organic Chemistry			1907
Physical Chemistry			1908
Chemical Science			1999

THE FSU FACT BOOK

FSU ACADEMIC PROGRAMS, COURSE PREFIXES, ACADEMIC DISCIPLINES

	<u>Course Prefix</u>	<u>Academic Discipline</u>	<u>HEGIS Code</u>
Classical Languages, Literature & Civilization			
Classics	CLS	Letters	1504
Classical Civilizations	CLN	Letters	1504
Greek & Latin			
Greek	GRK	Foreign Languages	1110
Latin	LAT	Foreign Languages	1109
English	ENH	Letters	1501
Linguistics			1505
Literature			1502
Creative Writing			1507
Geology	GLY	Physical Sciences	1914
History	HIS	Social Sciences	2205
Mathematics	MAT	Mathematics	1701
Meteorology	MET	Physical Sciences	1913
Modern Languages			
Chinese	CHI	Foreign Languages	1107
Czechoslovakian	CZH		1115
French	FRH		1102
German	GMN		1103
Italian	ITN		1104
Japanese	JPN		1108
Modern Languages	MLA		1101
Portugese	PSE		1199
Russian	RSN		1106

THE FSU FACT BOOK

FSU ACADEMIC PROGRAMS, COURSE PREFIXES, ACADEMIC DISCIPLINES

	<u>Course Prefix</u>	<u>Academic Discipline</u>	<u>HEGIS Code</u>
Modern Languages (continued)			
Serbo-Croatian	SCN	Foreign Languages	1115
Slavic Languages & Literature	SLC		1115
Spanish	SPA		1105
Linguistics	LIN		1199
Oceanography	OCN		1919
Biological Oceanography		Physical Sciences	1919
Chemical Oceanography			1919
Geological Oceanography			1919
Physical Oceanography			1919
Philosophy	PHI	Letters	1509
Physics	PSC	Physical Sciences	1902
Elementary Particle Physics-Exper.			1904
Elementary Particle Physics-Theor.			1904
Infrared Physics & Molecular Structure			1903
Low Energy Nuclear Physics-Exper.			1904
Low Energy Nuclear Physics-Theor.			1904
Molecular Scattering-Phys. Pedagogy			1903
Solid State Physics-Exper.			1903
Solid State Physics-Theoretical			1903
Theoretical Physics			1902
Radiation Physics			1902
Psychology	PSY	Psychology	2001
General Experimental Psychology			2002
Clinical Psychology			2003
School Psychology			2009

THE FSU FACT BOOK

FSU ACADEMIC PROGRAMS, COURSE PREFIXES, ACADEMIC DISCIPLINES

	<u>Course Prefix</u>	<u>Academic Discipline</u>	<u>HEGIS Code</u>
Religion	REL	Letters	1510
Statistics	STS	Mathematics	1702
Interdepartmental Programs			
American Studies	AMS	Area Studies	0313
Asian Studies	EAS	Area Studies	0301
Chemical Physics	CHP	Physical Sciences	1999
Inter-American Studies	IAM	Area Studies	0399
Humanities	HUS	Letters	1599
Molecular Biophysics	MOB	Physical Sciences	1999
Geophysical Fluid Dynamics	GFD	Physical Sciences	1999
Comparative World Literature	CWL	Letters	1503
Honors*	HON		

DIVISION OF PROFESSIONAL SCHOOLS & COLLEGES

COLLEGE OF BUSINESS

Accounting	ACT	Business & Management	0502
Business Administration	BSA	Business & Management	0501
Business Law	BSL		0501
Business Teacher Education	BSE		0514
Office Management	OFM		0515

*Discipline assignments for HONORS courses will vary depending upon which courses are taught as HONORS in each quarter.

THE FSU FACT BOOK

FSU ACADEMIC PROGRAMS, COURSE PREFIXES, ACADEMIC DISCIPLINES

	<u>Course Prefix</u>	<u>Academic Discipline</u>	<u>HEGIS Code</u>
Finance	FCE	Business & Management	0504
Hotel and Restaurant Administration	HRA		0508
Management	MAN		0506
Marketing Management	MAR		0509
Multinational Business Operations	MUL		0513
Pre-Law			0599
Risk Mgt.-Insurance & Real Estate	RIN		0512

COLLEGE OF EDUCATION

Area of Instructional Design & Personnel Development

Childhood Education			
Elementary Education	IDF	Education	0802
Early Childhood Education	PCF		0823
Instructional Design & Development	IDD	Education	0829
Instructional Systems			0829
Media Education			0829
Instructional Theory & Practice			0829
Language Education	IDB	Education	0830
Reading			0830
Foreign Language Education			0830
English Education			0830
Language Arts in Elementary School			0830

THE FSU FACT BOOK

FSU ACADEMIC PROGRAMS, COURSE PREFIXES, ACADEMIC DISCIPLINES

	<u>Course Prefix</u>	<u>Academic Discipline</u>	<u>HEGIS Code</u>
Science & Human Affairs Education	IDC	Education	0899
Social Studies Education			0899
Science Education			0834
Mathematics Education	IDE	Education	0833
Area of Professional & Clinical Programs			
Counseling, Health, & Rehabilitation	PCB	Education	0899
Counseling & Human Systems			0826
Health Education			0837
Rehabilitation Services			0899
Special Education	PCC	Education	0808
Interrelated Areas of Spec. Ed.			0808
Mental Retardation			0810
Visual Disabilities			0814
Leisure Services & Studies	PCD	Education	0899
Movement Sciences	HPE	Education	0899
Exercise Physiology			0899
Motor Learning			0899
Physical Education	HPF	Education	0835
Administration, Supervision & Curriculum			0835
Transportation & Safety Education	HPB	Education	0835

THE FSU FACT BOOK

FSU ACADEMIC PROGRAMS, COURSE PREFIXES, ACADEMIC DISCIPLINES

	<u>Course Prefix</u>	<u>Academic Discipline</u>	<u>HEGIS Code</u>
Area of Educational Mgt. Systems			
Design & Mgt. Post-Secondary Ed.	EMB	Education	0899
Adult Education			0807
Higher Education			0805
Design & Mgt. of Elementary & Secondary Education	EMC	Education	0899
Administration			0827
Management Systems			0899
Program Development & Supervision			0899
Educational Evaluation & Research Design	EMD	Education	0899
Research Methods & Statistics			0824
Institutional Research			0824
Evaluation & Measurement			0825
Developmental Studies in Education	EME	Education	0821
Education Policy			0821
History, Philosophy, Sociology, Psychology of Education			0821
Comparative Developmental Educational Studies			0821
Educational Psychology			0822
Vocational & Industrial Arts Ed.			
Vocational & Technical Ed.			0839
Industrial Art Education	HPC	Education	0839

THE FSU FACT BOOK

FSU ACADEMIC PROGRAMS, COURSE PREFIXES, ACADEMIC DISCIPLINES

	<u>Course Prefix</u>	<u>Academic Discipline</u>	<u>HEGIS Code</u>
SCHOOL OF LIBRARY SCIENCE	LIS	Library Science	1601
SCHOOL OF NURSING			
Nursing	NSG	Health Professions	1203
Psychiatric Nursing			1203
COLLEGE OF HOME ECONOMICS			
Clothing and Textiles	CLT	Home Economics	1303
Clothing & Textiles			1303
Fashion Design			1303
Fashion Merchandising			1303
Textiles			1303
Food and Nutrition	FDN	Home Economics	1306
Dietetics			1306
Food & Nutrition			1306
School Lunch Administration			1307
Food & Nutrition Science			1306
Home and Family	HMF	Home Economics	1399
Home & Family Life			1305
Family Economics			1304
Family Relations			1305
Child Development			1305
Housing			1302
Home Economics Education	HOE	Home Economics	1399
General Home Economics	HMS	Home Economics	1301

THE FSU FACT BOOK

FSU ACADEMIC PROGRAMS, COURSE PREFIXES, ACADEMIC DISCIPLINES

	<u>Course Prefix</u>	<u>Academic Discipline</u>	<u>HEGIS Code</u>
SOCIAL SCIENCES AND LAW			
SCHOOL OF CRIMINOLOGY	CRN	Public Affairs	2105
COLLEGE OF LAW	LAW	Law	1401
COLLEGE OF SOCIAL SCIENCES			
Economics	ECS	Social Sciences	2204
Geography	GGY	Social Sciences	2206
Government	GOV	Social Sciences	2207
Public Administration	PAD	Public Affairs	2102
Sociology	SOY	Social Sciences	2208
Urban & Regional Planning	UPL	Architecture & Env. Design	0206
Planning			0206
International Affairs	INA	Social Sciences	2210
Social Sciences	SLS	Social Sciences	2201
SCHOOL OF SOCIAL WORK	SOK	Public Affairs	2104
Black Studies Department		Social Sciences	2211

THE FSU FACT BOOK

FSU ACADEMIC PROGRAMS, COURSE PREFIXES, ACADEMIC DISCIPLINES

	<u>Course Prefix</u>	<u>Academic Discipline</u>	<u>HEGIS Code</u>
COMMUNICATION, FINE & APPLIED ARTS, & MUSIC			
COLLEGE OF COMMUNICATION			
Communication			1001
Speech Communication	SPH	Communications Letters	1506
Mass Communication	MAS	Communications	0601
Advertising & Public Relations	ADV	Communications	0604
Audiology & Speech Pathology	ASP	Health Professions	1220
Instructional Communication	ICO	Communications	0699
SCHOOL OF VISUAL ARTS			
Art	ART	Fine Arts	1002
Creative Art			1002
History & Criticism of Art			1003
Art Education & Constructive Design			1099
Art Education	ATE	Fine Arts	1099
Constructive Design	CON	Fine Arts	1099
Interior Design	INT	Architecture & Env. Design	0203
SCHOOL OF THEATRE			
	THE	Fine Arts	1007

THE FSU FACT BOOK

FSU ACADEMIC PROGRAMS, COURSE PREFIXES, ACADEMIC DISCIPLINES

	<u>Course Prefix</u>	<u>Academic Discipline</u>	<u>HEGIS Code</u>
SCHOOL OF MUSIC	MUS	Fine Arts	1004
Performance			1004
Brass			1004
Harp			1004
Organ			1004
Percussion			1004
Piano			1004
Strings			1004
Voice			1004
Woodwinds			1004
Composition			1004
Music History & Literature			1006
Opera Production			1004
Music Education			1004
Music Therapy			
Music Theory			1004
Musicology			1006
Music, Undecided			1004
Department of Dance	DAN	Fine Arts	1008
Dance, Other			1008

THE FSU FACT BOOK

FSU ACADEMIC PROGRAMS, COURSE PREFIXES, ACADEMIC DISCIPLINES

	<u>Course Prefix</u>	<u>Academic Discipline</u>	<u>HEGIS Code</u>
Interdivisional Programs			
Marriage & Family Living			1399
Through Home & Family Life		Home Economics	1399
Through Sociology		Social Science	2208
Library Science		Library Science	1601
Music		Fine Arts	1099
Slavic & East European Studies	SLE	Area Studies	0311

THE FSU FACT BOOK

Table I-7

COOPERATIVE EDUCATION

The Florida State University Cooperative Education Program is an educational plan where students are placed in work situations designed to complement and enrich their on-campus learning experiences. Positions contributing to the academic and career development of students are facilitated with employers in government, industry, education, business and social services. The goal of the program is to be of service to every student who feels he or she can profit from a cooperative education experience. The program has purposely been structured in a flexible manner to maximize the opportunities for meaningful employment afforded to Florida State University students. Additionally, recognition of the myriad of differing career aspirations among students necessitates a flexible posture toward cooperative education.

From September 1971 to March 1977, 1,078 Co-op students were placed with 450 firms. Programs can result in academic credit for the students, and the program of Cooperative Education is approved for veterans studying under G.I. Bill benefits.

<u>Major Offered on Cooperative Basis</u>	<u>Total Number of Co-op Students</u>
Accounting	317
Adult Education	2
Applied Math	25
Audiology	2
Biology	20
Business	200
Business Administration	10
Business Law	1
Chemistry	5

THE FSU FACT BOOK

COOPERATIVE EDUCATION

<u>Major Offered on Cooperative Basis</u>	<u>Total Number of Co-op Students</u>
Child Development	7
Counseling	3
Criminology	55
Economics	10
Education	20
English	6
Fashion Merchandizing	10
Finance	15
Food & Nutrition	25
Geography	2
Geology	1
Health	8
Home Economics	1
Hotel and Restaurant	8
Industrial Art	2
Interior Design	78
Law	4
Leisure Studies	10
Library Science	25
Management	10
Marketing	5
Math Education	2
Meteorology	15
Music	25
Nursing	1
Oceanography	2
Psychology	25
Public Administration	6
Recreation	25
Risk & Insurance	32
Social Science	10

THE FSU FACT BOOK

COOPERATIVE EDUCATION

<u>Major Offered on Cooperative Basis</u>	<u>Total Number of Co-op Students</u>
Sociology	17
Spanish	2
Special Education	9
Speech Communication	2
Speech Pathology	4
Statistics	3
Urban Planning	2
Vocational Education	9
Total	1,078

Table I-8

THE CENTER FOR PROFESSIONAL DEVELOPMENT
AND PUBLIC SERVICE

In September, 1975, reorganization of the Division of Continuing Education resulted in two distinct offices which were created to help better meet the needs of the lifelong learner through continuing education. One of these offices, the Center for Professional Development and Public Service, working with various schools, colleges, and academic departments of the University, offers adults in the State of Florida and the Southeastern United States non-credit programs tailored to meet their personal and professional needs. To provide programs of high quality and to achieve a well-coordinated effort in so doing is a guiding objective of the Center.

The Center's activities fall into four major areas: research, program planning and execution, program consultation, and individual counseling. Through these areas the Center helps the University efficiently and effectively bring knowledge and resources back to the taxpayer in the form of increased skills, better service and an enlightened citizenry. To multiply the impact of tax dollars, the Center also administered two federally-supported grants last year. One was concerned with consumer education and the other enhancing the leadership skills of Florida's rural women.

The Center for Professional Development and Public Service is growing rapidly. During 1975-76, its 166 programs of noncredit continuing education reached more than 9,000 participants (a significant number of them state government personnel). Among those programs offered were: Executive Management Development Seminars, Child Welfare Workshops, Returning Women Seminars, Southern Conference on Corrections, Human Relations Workshops, House Plans Workshop, Grantsmanship Seminars, and the Financial Counseling School. The University recognized the involvement of individuals and organizations in Center programs by awarding Continuing Education Units (CEU's). The CEU is the nationally recognized, standard unit of measurement for participation in noncredit continuing education. The following table shows comparative data on Continuing Education Unit programming of the Florida State University for 1974-75 and 1975-76:

THE FSU FACT BOOK
THE CENTER FOR PROFESSIONAL DEVELOPMENT AND PUBLIC SERVICE
"CEU Program Comparative Data"

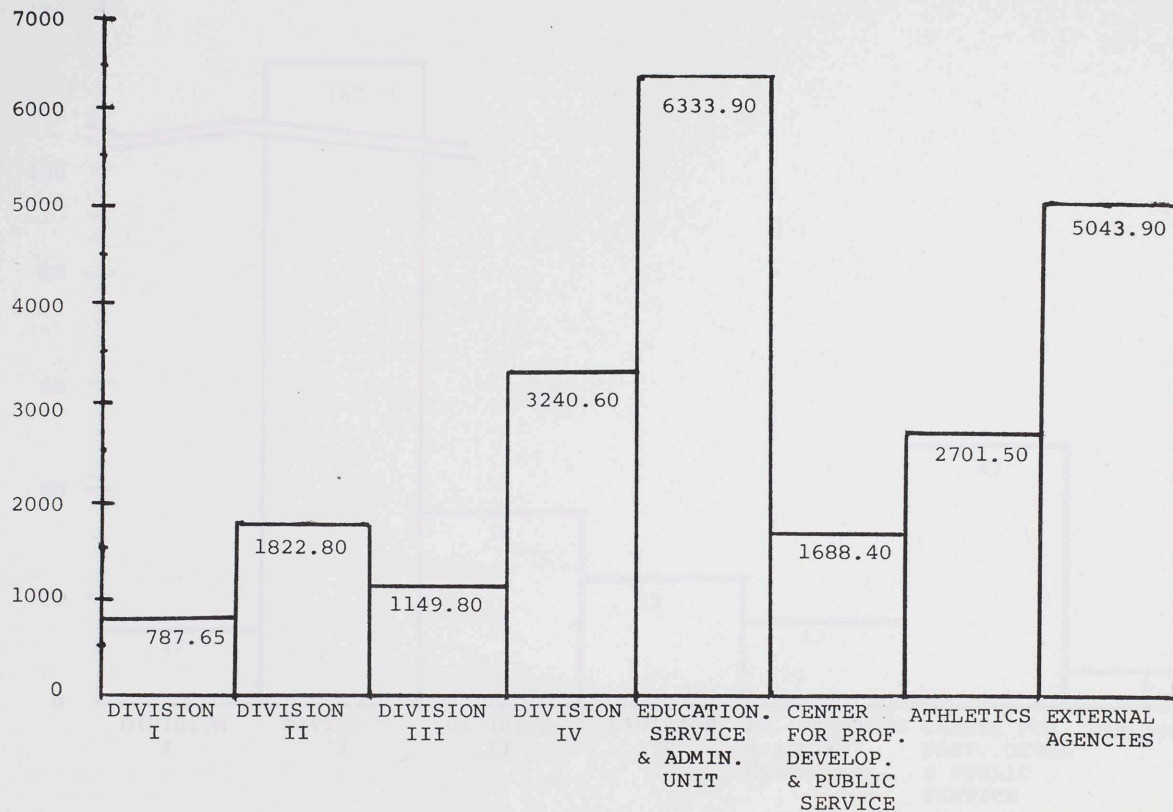
	<u>1974-75</u>	<u>1975-76</u>
Number of Programs	125	166
Number of Participants	15,508	9,001
Number CEU's individual	4,381.3	5,073.55
Number CEU's institutional	3,203.3	17,695.00

As can be seen from the above table, the numbers of programs and the quantity of Continuing Education Units generated increased dramatically. The decrease in the number of participants was a result of greater programming emphasis on specially designed workshops and seminars for specific target groups rather than on large conferences.

Following are three bar graphs which indicate the level of involvement of various academic divisions in Continuing Education Unit programming:

NUMBERS OF CONTINUING EDUCATION UNITS GENERATED
BY SOURCE OF NON-CREDIT PROGRAMS

GRAPH I-8-A

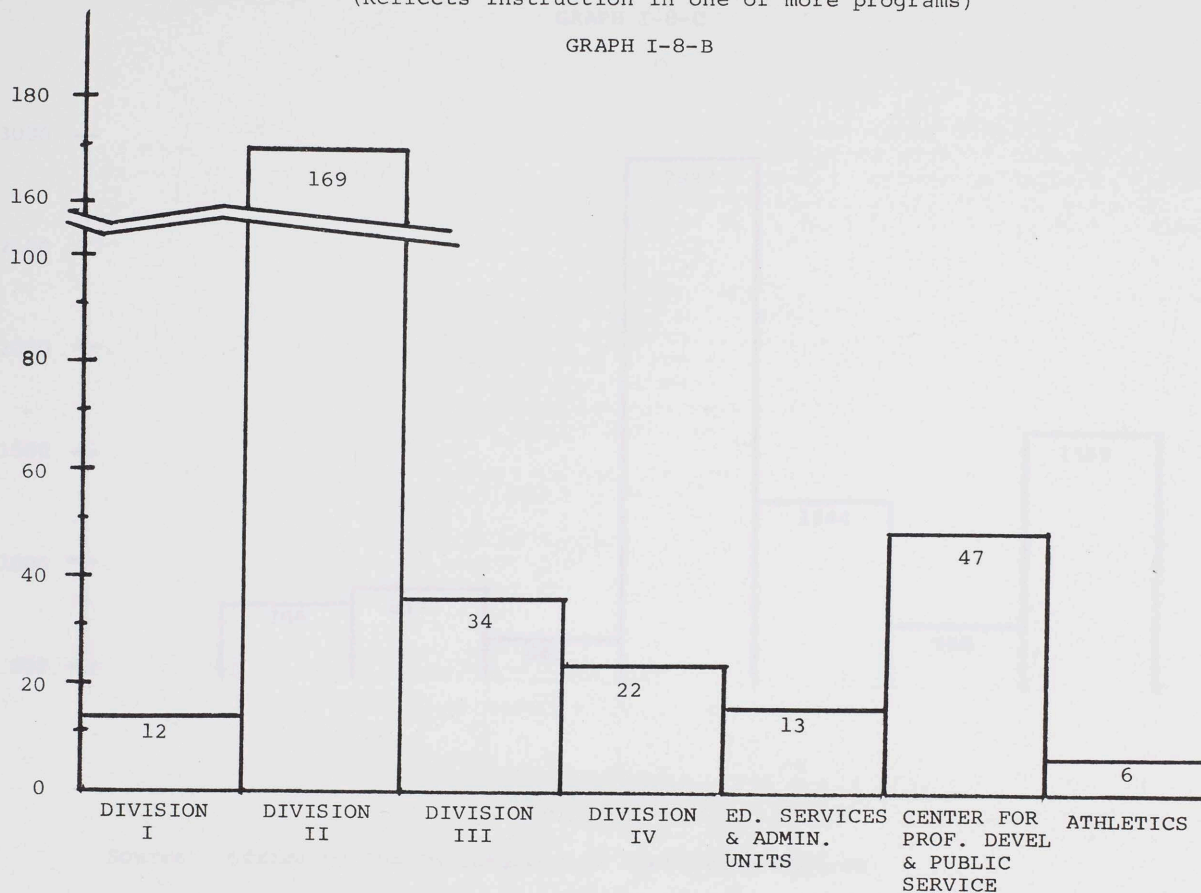


SOURCE: CENTER FOR PROFESSIONAL DEVELOPMENT & PUBLIC SERVICE

TOTAL INSTRUCTIONAL FACULTY PARTICIPATION
(Reflects instruction in one or more programs)

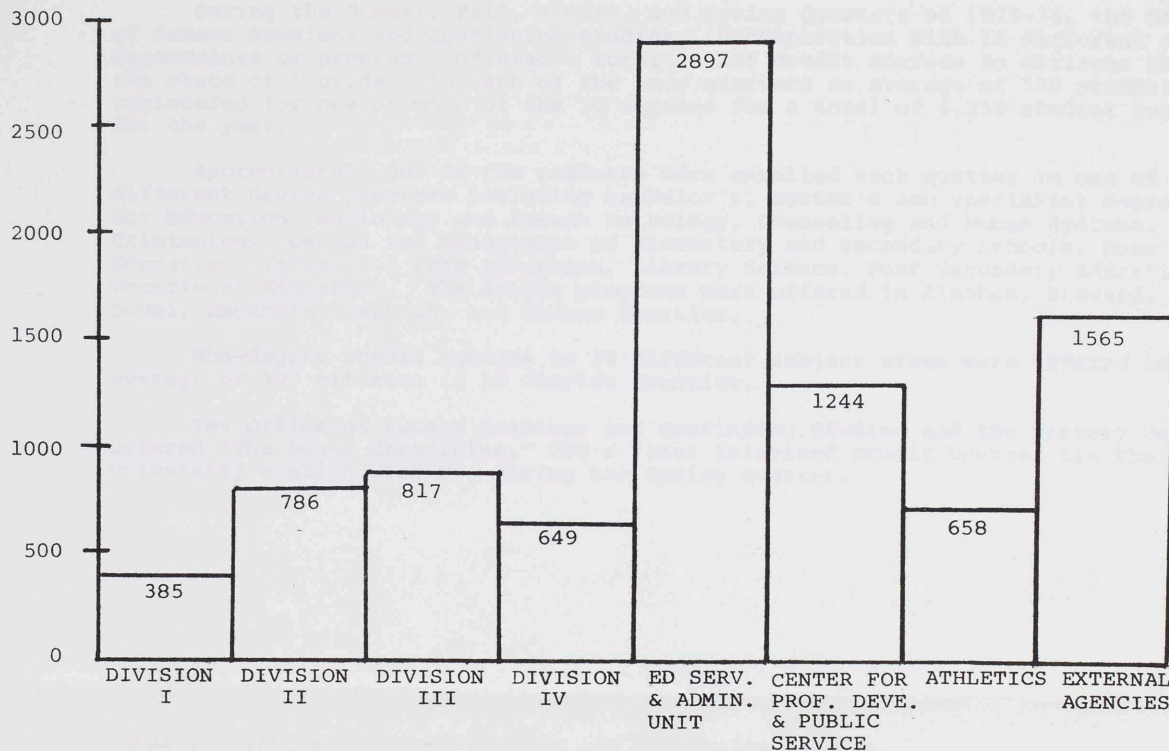
GRAPH I-8-B

TOTAL NUMBERS OF FSU FACULTY/STAFF INSTRUCTING CEU PROGRAMS



NUMBER OF PARTICIPANTS SERVED BY PROGRAM INITIATION SOURCE

GRAPH I-8-C



SOURCE: CENTER FOR PROFESSIONAL DEVELOPMENT & PUBLIC SERVICE

THE FSU FACT BOOK

Table I-9

OFFICE OF SUMMER SESSIONS AND CONTINUING STUDIES

During the Summer, Fall, Winter, and Spring Quarters of 1975-76, the Office of Summer Sessions and Continuing Studies, in cooperation with 15 different academic departments or programs, offered a total of 155 credit courses to citizens throughout the state of Florida. In each of the four quarters an average of 700 students registered for one or more of the 39 courses for a total of 4,259 student registrations for the year.

Approximately 385 of the students were enrolled each quarter in one of sixteen different degree programs including bachelor's, master's and specialist degrees in Art Education, Audiology and Speech Pathology, Counseling and Human Systems, Criminology, Design and Management of Elementary and Secondary Schools, Home Economics Education, Industrial Arts Education, Library Science, Post Secondary Education, and Vocational Education. The degree programs were offered in Alachua, Brevard, Columbia, Duval, Escambia, Jackson, and Orange Counties.

Non-degree credit courses in 14 different subject areas were offered to an average of 300 citizens in 15 Florida Counties.

The Office of Summer Sessions and Continuing Studies and the History Department offered "The Adams Chronicles," FSU's first televised credit course, via the university station WFSU-TV, during the Spring Quarter.

SECTION II

The data in this section are student related.

TABLE II-1. State Fundable Student Credit Hours by School and Department-Fall Quarters. This table reports state fundable student credit hours by department by course level for the quarters Fall 1973, Fall 1974, and Fall 1975. Lower level student credit hours include hours generated by courses numbered 299 and below. Upper level student credit hours include those generated by 300 and 400 level courses. Graduate credit hours include hours generated by courses numbered 500 and above. Student FTE (full-time equivalent) can be calculated by dividing Lower and Upper level student credit hours by a factor of 15 and graduate level credit hours by a factor of 12.

TABLE II-2. State Fundable Student Credit Hours by School and Department-Four Quarter Average. This table reports four quarter average student credit hours (state fundable) for the years 1973-74, 1974-75, and 1975-76. The summer quarter precedes the other three in an academic year.

TABLE II-3. Geographical Origin of FSU Students by Florida County, Fall 1976. This table summarizes by county the number of students who indicated a Florida county as their home of record in the Fall Quarter 1976. Map II-3 graphically illustrates this numerical distribution.

Table II-4. First Time in College Students by Florida County-Fall 1976. This table lists the number of FTIC students who indicated a Florida county as their home county of residence in the Fall Quarter 1976. Map II-4-A graphically represents this distribution by headcount students. Map II-4-B shows the percentage distribution of county high school graduates attending FSU as first time in college students in the Fall Quarter 1976. From Map II-4-B it can be determined

that over three percent of 1975-76 Florida High School graduates in Leon, Jefferson, Liberty, and Sarasota counties came to FSU as first time in college students in the Fall Quarter 1976.

TABLE II-5. Destinations of 1975-76 Florida High School Twelfth Grade Graduates Continuing Their Education. This table summarizes the categories reported for high school graduates continuing their educations. This table is summarized by county and provides the base information for the three succeeding tables.

TABLE II-6. FSU Percentage of 1975-76 Florida High School Graduates Continuing Their Educations at any University, Inside or Outside of Florida, by County. This table is a by county comparison of the percentage of 1975-76 Florida High School graduates attending universities who enrolled at FSU as first time in college students in the Fall Quarter 1976. Thus, the figure for Alachua county, 10.28 percent indicates, that of the 1975-76 high school graduates in Alachua county going to universities, 10.28 percent came to FSU.

TABLE II-7. FSU Percentage Share of 1975-76 Florida High School Graduates Continuing Their Educations in the State University System of Florida, by County. This table is a comparison between the first time in college students at FSU, Fall Quarter 1976 and the graduates of Florida High Schools from the same county who indicated attendance at schools in the State University System of Florida. From this table can be determined what percentage of county graduates attended FSU in the Fall Quarter 1976. Map II-7 is a graphic representation of Table II-7.

TABLE II-8. FSU Percentage Share of 1975-76 Florida High School Graduates Continuing Their Education (University, Junior College, Technical-Trade School) by County. This table summarizes what percentage of Florida high school graduates continuing their education came to FSU as first time in college students in the Fall Quarter 1976.

TABLE II-9. Florida Community/Junior College Students Transferring to FSU, Fall Quarters. This table summarizes the number of students transferring to FSU from state community and junior colleges for the Fall Quarters of 1971 through 1975. Also given is the percentage contributed by each college each year.

TABLE II-10. U.S. Sources of FSU Enrollment, Fall, 1976. This table summarizes by state the number of students who indicated a state of residence as their home of record in the Fall Quarter 1976.

TABLE II-11. Fall Quarter, 1976--International Students--Country of Origin. This table lists the countries indicated as the home residence by students during the Fall Quarter 1976.

TABLE II-12. Rank Order of Undergraduate Majors at FSU, Fall 1976. This table lists in descending order of major, the number of undergraduate students indicating a specific major area of study on the Fall 1976 (Preliminary) Student Data Course File.

TABLE II-13. Rank Order of Graduate Majors at FSU, Fall 1976. This table lists in descending order of major the number of graduate students indicating a specific major area of study on this Fall 1976 (Preliminary) Student Data Course File.

TABLE II-14. Percentage Distribution of FSU Credit Hours by Level, 1975-76. This table gives the distribution of credit hours by level and discipline at FSU. From this table it can be determined that the mathematics discipline produced 11.45 percent of the lower level credit hours, 2.57 percent of the upper level credit hours, and 5.13 percent of all FSU student credit hours for 1975-76.

TABLE II-15. FSU Student Credit Hours as a Percentage of the Total State University System Credit Hours at Each Level of Each Discipline, 1975-76. This table compares the number of credit hours produced at FSU in each discipline, at each level, with the total number produced in the same discipline and level in the State University System, during the 1975-76 academic year. For example, this table indicates what percentage of the total State University System lower level education credit hours were produced at FSU during the academic year, 1975-76.

TABLE II-16. FSU Student Credit Hours as a Percent of the Total State University System Credit Hours, 1975-76. This table indicates what percentage of the total State University System credit hours were produced at each level and discipline at FSU. For example, FSU produced 1.57 percent of the total State University System credit hours at the upper level of the education discipline. This table differs from Table II-15 in that Table II-16 compares FSU credit hours at a given discipline and level to the SUS total, regardless of discipline and level. Table II-15 compares FSU credit hours only to SUS credit hours at the same discipline and level.

THE FSU FACT BOOK
STATE FUNDABLE
STUDENT CREDIT HOUR ENROLLMENT BY SCHOOL AND DEPARTMENT
FALL QUARTERS

TABLE II - 1

	<u>1973</u>	<u>1974</u>	<u>1975</u>
DIVISION I - ARTS AND SCIENCES			
Anthropology			
Lower	2163	1908	1836
Upper	1400	1533	1314
Graduate	354	268	240
Total	<u>3917</u>	<u>3709</u>	<u>3390</u>
Biological Sciences			
Lower	4242	4275	3547
Upper	4084	4578	3541
Graduate	1562	1152	1216
Total	<u>9888</u>	<u>10005</u>	<u>8304</u>
Chemistry			
Lower	4821	4448	4370
Upper	1879	2031	2142
Graduate	1048	1033	935
Total	<u>7748</u>	<u>7512</u>	<u>7447</u>
Classical Lang. & Lit.			
Classical Civ. & Lit			
Lower	297	447	258
Upper	501	411	579
Graduate	108	84	52
Total	<u>906</u>	<u>942</u>	<u>889</u>

THE FSU FACT BOOK
STATE FUNDABLE
STUDENT CREDIT HOUR ENROLLMENT BY SCHOOL AND DEPARTMENT
FALL QUARTERS

TABLE II - 1

	<u>1973</u>	<u>1974</u>	<u>1975</u>
Classics			
Lower	0	0	0
Upper	0	45	0
Graduate	<u>39</u>	<u>31</u>	<u>8</u>
Total	39	76	8
Greek			
Lower	120	132	144
Upper	15	21	9
Graduate	<u>21</u>	<u>15</u>	<u>12</u>
Total	156	168	165
Latin			
Lower	246	294	207
Upper	84	72	116
Graduate	<u>30</u>	<u>18</u>	<u>9</u>
Total	360	384	332
Classical Lang. & Lit. Totals			
Lower	663	873	609
Upper	600	549	704
Graduate	<u>198</u>	<u>148</u>	<u>81</u>
Total	1461	1570	1394
English			
Lower	7036	8185	8019
Upper	3917	3713	3641
Graduate	<u>1110</u>	<u>908</u>	<u>821</u>
Total	12063	12806	12481

THE FSU FACT BOOK
STATE FUNDABLE
STUDENT CREDIT HOUR ENROLLMENT BY SCHOOL AND DEPARTMENT
FALL QUARTERS

TABLE II - 1

	<u>1973</u>	<u>1974</u>	<u>1975</u>
Geology			
Lower	2532	2795	1903
Upper	295	215	244
Graduate	292	364	299
Total	<u>3119</u>	<u>3374</u>	<u>2446</u>
History			
Lower	7479	7665	7446
Upper	4646	4456	4301
Graduate	1195	1060	870
Total	<u>13320</u>	<u>13181</u>	<u>12617</u>
Humanities			
Lower	3657	3912	3348
Upper	240	156	78
Graduate	262	213	189
Total	<u>4159</u>	<u>4281</u>	<u>3615</u>
Mathematics			
Lower	9912	9877	10424
Upper	1310	1040	1036
Graduate	814	622	420
Total	<u>12036</u>	<u>11539</u>	<u>11880</u>
Meteorology			
Lower	1690	1696	1497
Upper	480	571	305
Graduate	527	376	487
Total	<u>2697</u>	<u>2643</u>	<u>2289</u>

THE FSU FACT BOOK
STATE FUNDABLE
STUDENT CREDIT HOUR ENROLLMENT BY SCHOOL AND DEPARTMENT
FALL QUARTERS

TABLE II - 1

	<u>1973</u>	<u>1974</u>	<u>1975</u>
Modern Languages			
Chinese			
Lower	116	116	88
Upper	12	24	39
Graduate	39	41	40
Total	<u>216</u>	<u>181</u>	<u>167</u>
Czechoslovakian			
Lower	0	0	0
Upper	0	0	0
Graduate	0	0	0
Total	<u>0</u>	<u>0</u>	<u>0</u>
French			
Lower	3164	2751	2443
Upper	342	267	213
Graduate	245	162	211
Total	<u>3751</u>	<u>3180</u>	<u>2867</u>
German			
Lower	2078	1812	1753
Upper	210	117	150
Graduate	102	134	138
Total	<u>2390</u>	<u>2063</u>	<u>2041</u>
Italian			
Lower	1204	712	810
Upper	75	126	75
Graduate	30	36	31
Total	<u>1309</u>	<u>874</u>	<u>916</u>

THE FSU FACT BOOK
STATE FUNDABLE
STUDENT CREDIT HOUR ENROLLMENT BY SCHOOL AND DEPARTMENT
FALL QUARTERS

TABLE II - 1

	<u>1973</u>	<u>1974</u>	<u>1975</u>
Japanese			
Lower	119	104	74
Upper	0	0	0
Graduate	0	0	0
Total	<u>119</u>	<u>104</u>	<u>74</u>
Modern Languages			
Lower	102	106	64
Upper	102	138	72
Graduate	297	113	76
Total	<u>501</u>	<u>357</u>	<u>212</u>
Portuguese			
Lower	10	34	0
Upper	0	0	0
Graduate	0	0	6
Total	<u>10</u>	<u>34</u>	<u>6</u>
Russian			
Lower	489	336	413
Upper	105	75	48
Graduate	56	75	39
Total	<u>650</u>	<u>486</u>	<u>500</u>
Serbo-Croatian			
Lower	6	15	6
Upper	0	3	3
Graduate	6	6	0
Total	<u>12</u>	<u>24</u>	<u>9</u>

THE FSU FACT BOOK
STATE FUNDABLE
STUDENT CREDIT HOUR ENROLLMENT BY SCHOOL AND DEPARTMENT
FALL QUARTERS

TABLE II - 1

	<u>1973</u>	<u>1974</u>	<u>1975</u>
Slavic			
Lower	0	0	0
Upper	0	0	0
Graduate	<u>16</u>	<u>0</u>	<u>6</u>
Total	16	0	6
Spanish			
Lower	4063	3580	3302
Upper	570	543	465
Graduate	<u>239</u>	<u>197</u>	<u>157</u>
Total	4872	4320	3924
Linguistics			
Lower	0	0	0
Upper	0	0	0
Graduate	<u>0</u>	<u>0</u>	<u>0</u>
Total	0	0	0
Modern Lang. Totals			
Lower	11400	9566	8953
Upper	1416	1293	1065
Graduate	<u>1030</u>	<u>764</u>	<u>704</u>
Total	13846	11623	10722
Oceanography			
Lower	102	0	438
Upper	111	0	0
Graduate	<u>784</u>	<u>532</u>	<u>420</u>
Total	997	532	858

THE FSU FACT BOOK
STATE FUNDABLE
STUDENT CREDIT HOUR ENROLLMENT BY SCHOOL AND DEPARTMENT
FALL QUARTERS

TABLE II - 1

	<u>1973</u>	<u>1974</u>	<u>1975</u>
Philosophy			
Lower	912	880	800
Upper	695	607	581
Graduate	360	278	347
Total	<u>1967</u>	<u>1765</u>	<u>1728</u>
Physics			
Lower	3190	3224	2973
Upper	1159	1345	1308
Graduate	847	535	590
Total	<u>5196</u>	<u>5104</u>	<u>4871</u>
Psychology			
Lower	4755	4884	5118
Upper	9026	7339	7517
Graduate	2000	1904	1608
Total	<u>15781</u>	<u>14127</u>	<u>14243</u>
Religion			
Lower	2410	2645	2249
Upper	1248	819	574
Graduate	255	402	267
Total	<u>3913</u>	<u>3866</u>	<u>3090</u>
Statistics			
Lower	0	0	0
Upper	1460	1899	1966
Graduate	697	804	936
Total	<u>2157</u>	<u>2703</u>	<u>2902</u>

THE FSU FACT BOOK
STATE FUNDABLE
STUDENT CREDIT HOUR ENROLLMENT BY SCHOOL AND DEPARTMENT
FALL QUARTERS .

TABLE II - 1

	<u>1973</u>	<u>1974</u>	<u>1975</u>
Geophysical Fluid Dynamics			
Lower	0	0	0
Upper	0	0	0
Graduate	107	48	36
Total	<u>107</u>	<u>48</u>	<u>36</u>
Molecular Biophysics			
Lower	0	0	0
Upper	0	0	0
Graduate	187	187	129
Total	<u>187</u>	<u>187</u>	<u>129</u>
American Studies			
Lower	0	0	0
Upper	345	357	45
Graduate	19	21	9
Total	<u>364</u>	<u>378</u>	<u>54</u>
Asian Studies			
Lower	0	0	0
Upper	0	0	0
Graduate	67	51	59
Total	<u>67</u>	<u>51</u>	<u>59</u>
Chemical Physics			
Lower	0	0	0
Upper	0	0	0
Graduate	0	0	0
Total	<u>0</u>	<u>0</u>	<u>0</u>

THE FSU FACT BOOK
STATE FUNDABLE
STUDENT CREDIT HOUR ENROLLMENT BY SCHOOL AND DEPARTMENT
FALL QUARTERS

TABLE II - 1

	<u>1973</u>	<u>1974</u>	<u>1975</u>
Inter-American Studies			
Lower	0	0	0
Upper	0	0	0
Graduate	0	0	0
Total	<u>0</u>	<u>0</u>	<u>0</u>
Honors			
Lower	222	126	54
Upper	0	0	0
Graduate	0	0	0
Total	<u>222</u>	<u>126</u>	<u>54</u>
Military Studies			
Lower	0	0	0
Upper	0	0	0
Graduate	0	0	0
Total	<u>0</u>	<u>0</u>	<u>0</u>
Aerospace Studies			
Lower	0	0	0
Upper	0	0	0
Graduate	0	0	0
Total	<u>0</u>	<u>0</u>	<u>0</u>
Comparative World Literature			
Lower	0	0	0
Upper	0	27	36
Graduate	0	0	0
Total	<u>0</u>	<u>27</u>	<u>36</u>

THE FSU FACT BOOK
STATE FUNDABLE
STUDENT CREDIT HOUR ENROLLMENT BY SCHOOL AND DEPARTMENT
FALL QUARTERS

TABLE II - 1

	<u>1973</u>	<u>1974</u>	<u>1975</u>
Division I - Totals			
Lower	67186	66959	63584
Upper	34311	32528	30398
Graduate	13715	11670	10663
Total	<u>115212</u>	<u>111157</u>	<u>104645</u>

DIVISION II -PROFESSIONAL SCHOOLS AND COLLEGES

College of Business			
Accounting			
Lower	0	0	0
Upper	4239	5324	6226
Graduate	220	230	190
Total	<u>4459</u>	<u>5554</u>	<u>6416</u>
Business Administration			
Lower	2900	3120	3232
Upper	11165	11724	12686
Graduate	2808	2410	2289
Total	<u>16873</u>	<u>17254</u>	<u>18207</u>
Business Teacher Education			
Lower	537	351	270
Upper	362	344	404
Graduate	0	0	0
Total	<u>899</u>	<u>695</u>	<u>674</u>

THE FSU FACT BOOK
STATE FUNDABLE
STUDENT CREDIT HOUR ENROLLMENT BY SCHOOL AND DEPARTMENT
FALL QUARTERS

TABLE II - 1

	<u>1973</u>	<u>1974</u>	<u>1975</u>
Business Law			
Lower	0	0	0
Upper	573	798	675
Graduate	0	0	0
Total	<u>573</u>	<u>798</u>	<u>675</u>
Finance			
Lower	0	0	0
Upper	873	844	1024
Graduate	0	0	0
Total	<u>873</u>	<u>844</u>	<u>1024</u>
Hotel and Restaurant Administration			
Lower	0	0	0
Upper	1534	1477	1676
Graduate	0	0	0
Total	<u>1534</u>	<u>1477</u>	<u>1676</u>
Risk & Insurance			
Lower	0	0	0
Upper	348	1124	1200
Graduate	0	0	0
Total	<u>348</u>	<u>1124</u>	<u>1200</u>
Management			
Lower	0	0	0
Upper	1408	1220	1184
Graduate	0	0	0
Total	<u>1408</u>	<u>1220</u>	<u>1184</u>

THE FSU FACT BOOK
STATE FUNDABLE
STUDENT CREDIT HOUR ENROLLMENT BY SCHOOL AND DEPARTMENT
FALL QUARTERS

TABLE II - 1

	<u>1973</u>	<u>1974</u>	<u>1975</u>
Marketing			
Lower	0	0	0
Upper	1368	1456	1512
Graduate	0	0	0
Total	<u>1368</u>	<u>1456</u>	<u>1512</u>
Office Management			
Lower	0	0	0
Upper	119	173	126
Graduate	0	0	0
Total	<u>119</u>	<u>173</u>	<u>126</u>
Multi-national			
Business Operations			
Lower	0	0	0
Upper	208	172	256
Graduate	0	0	0
Total	<u>208</u>	<u>172</u>	<u>256</u>
College of Business - Totals			
Lower	3437	3471	3502
Upper	22197	24656	26969
Graduate	3028	2640	2479
Total	<u>28662</u>	<u>30767</u>	<u>32950</u>
College of Education			
Area of Ed. Mgt. Systems Totals			
Lower	336	0	0
Upper	2649	3150	3088
Graduate	5916	6171	5829
Total	<u>8901</u>	<u>9321</u>	<u>8917</u>

THE FSU FACT BOOK
STATE FUNDABLE
STUDENT CREDIT HOUR ENROLLMENT BY SCHOOL AND DEPARTMENT
FALL QUARTERS

TABLE II - 1

	<u>1973</u>	<u>1974</u>	<u>1975</u>
Area of Instructional Design and Personnel Development Totals			
Lower	0	16	32
Upper	7310	9467	8932
Graduate	2975	2864	2798
Total	<u>10285</u>	<u>12347</u>	<u>11762</u>
Area of Professional and Clinical Programs Totals			
Lower	2176	1557	1431
Upper	10863	8531	8438
Graduate	3370	3236	3110
Total	<u>16409</u>	<u>13324</u>	<u>12979</u>
College of Education Totals			
Lower	2512	1573	1463
Upper	20822	21148	20458
Graduate	<u>12261</u>	<u>12271</u>	<u>11737</u>
Total	<u>35595</u>	<u>34992</u>	<u>33658</u>
School of Home Economics Clothing and Textiles			
Lower	1003	1245	1222
Upper	1358	1549	2032
Graduate	54	121	82
Total	<u>2415</u>	<u>2915</u>	<u>3336</u>
Food and Nutrition			
Lower	871	1172	1125
Upper	879	837	1075
Graduate	<u>121</u>	<u>130</u>	<u>95</u>
Total	<u>1871</u>	<u>2139</u>	<u>2295</u>

THE FSU FACT BOOK
STATE FUNDABLE
STUDENT CREDIT HOUR ENROLLMENT BY SCHOOL AND DEPARTMENT
FALL QUARTERS

TABLE II - 1

	<u>1973</u>	<u>1974</u>	<u>1975</u>
Home and Family Life			
Lower	0	0	0
Upper	3606	2937	2759
Graduate	397	379	399
Total	<u>4003</u>	<u>3316</u>	<u>3158</u>
Home Economics Education			
Lower	0	0	0
Upper	595	666	826
Graduate	330	309	279
Total	<u>925</u>	<u>975</u>	<u>1105</u>
General Home Economics			
Lower	0	0	0
Upper	105	380	0
Graduate	45	75	0
Total	<u>150</u>	<u>455</u>	<u>0</u>
School of Home Economics			
Totals			
Lower	1874	2417	2347
Upper	6543	6369	6692
Graduate	947	1014	855
Total	<u>9364</u>	<u>9800</u>	<u>9894</u>
Library Science			
Lower	189	144	83
Upper	980	1004	693
Graduate	1943	1832	1770
Total	<u>3112</u>	<u>2980</u>	<u>2546</u>

THE FSU FACT BOOK
STATE FUNDABLE
STUDENT CREDIT HOUR ENROLLMENT BY SCHOOL AND DEPARTMENT
FALL QUARTERS

TABLE II - 1

	<u>1973</u>	<u>1974</u>	<u>1975</u>
Nursing			
Lower	0	0	0
Upper	5525	3758	3703
Graduate	0	0	0
Total	<u>5525</u>	<u>3758</u>	<u>3703</u>
Division II - Totals			
Lower	8012	7605	7395
Upper	56067	56935	58515
Graduate	18179	17757	16841
Total	<u>82258</u>	<u>82297</u>	<u>82751</u>
DIVISION III - SOCIAL SCIENCES AND LAW			
Criminology			
Lower	0	0	0
Upper	5965	6154	6550
Graduate	682	1091	1099
Total	<u>6647</u>	<u>7245</u>	<u>7649</u>
Law			
Lower	0	0	0
Upper	0	0	0
Graduate	6749	6346	6668
Total	<u>6749</u>	<u>6346</u>	<u>6668</u>
College of Social Sciences			
Economics			
Lower	4115	4227	4860
Upper	843	1038	1100
Graduate	732	595	475
Total	<u>5690</u>	<u>5860</u>	<u>6435</u>

THE FSU FACT BOOK
STATE FUNDABLE
STUDENT CREDIT HOUR ENROLLMENT BY SCHOOL AND DEPARTMENT
FALL QUARTERS

TABLE II - 1

	<u>1973</u>	<u>1974</u>	<u>1975</u>
Geography			
Lower	1365	1725	1704
Upper	839	1008	928
Graduate	220	180	161
Total	<u>2424</u>	<u>2913</u>	<u>2793</u>
Government			
Lower	2861	2664	2013
Upper	3762	3277	3826
Graduate	1207	1247	1572
Total	<u>7830</u>	<u>7188</u>	<u>7411</u>
International Affairs			
Lower	0	0	0
Upper	9	0	12
Graduate	9	3	4
Total	<u>18</u>	<u>3</u>	<u>16</u>
Social Sciences			
Lower	0	0	0
Upper	177	52	0
Graduate	15	12	18
Total	<u>192</u>	<u>64</u>	<u>18</u>
Sociology			
Lower	2637	2535	2649
Upper	2757	3195	2625
Graduate	1151	822	692
Total	<u>6545</u>	<u>6552</u>	<u>5966</u>

THE FSU FACT BOOK
STATE FUNDABLE
STUDENT CREDIT HOUR ENROLLMENT BY SCHOOL AND DEPARTMENT
FALL QUARTERS

TABLE II - 1

	<u>1973</u>	<u>1974</u>	<u>1975</u>
Urban & Regional Planning			
Lower	0	0	0
Upper	0	75	87
Graduate	1603	2056	1299
Total	<u>1603</u>	<u>2131</u>	<u>1386</u>
Public Administration			
Lower	0	0	0
Upper	0	0	0
Graduate	0	0	0
Total	<u>0</u>	<u>0</u>	<u>0</u>
College of Social Science Totals			
Lower	10978	11151	11226
Upper	8387	8645	8578
Graduate	4937	4915	4221
Total	<u>24302</u>	<u>24711</u>	<u>24025</u>
Social Work			
Lower	63	129	85
Upper	3040	3096	2943
Graduate	2670	2730	2891
Total	<u>5773</u>	<u>5955</u>	<u>5919</u>
Division III - Totals			
Lower	11041	11280	11311
Upper	17392	17895	18071
Graduate	15038	15082	14879
Total	<u>43471</u>	<u>44257</u>	<u>44261</u>

THE FSU FACT BOOK
STATE FUNDABLE
STUDENT CREDIT HOUR ENROLLMENT BY SCHOOL AND DEPARTMENT
FALL QUARTERS

TABLE II - 1

	<u>1973</u>	<u>1974</u>	<u>1975</u>
DIVISION IV - COMMUNICATIONS, FINE & APPLIED ARTS			
College of Communications			
Advertising and Public Relations			
Lower	0	0	0
Upper	548	472	460
Graduate	0	0	0
Total	<u>548</u>	<u>472</u>	<u>460</u>
Audiology and Speech Pathology			
Lower	0	0	0
Upper	0	1584	1566
Graduate	9	638	946
Total	<u>9</u>	<u>2222</u>	<u>2512</u>
Mass Communications (Includes Speech Comm. for 1973)			
Lower	2179	918	621
Upper	3263	2849	2973
Graduate	513	295	311
Total	<u>5955</u>	<u>4062</u>	<u>3905</u>
Speech Communications			
Lower	0	1009	1256
Upper	0	1688	2023
Graduate	0	309	293
Total	<u>0</u>	<u>3006</u>	<u>3572</u>
Instructional Communication			
Lower	0	0	6
Upper	0	82	32
Graduate	0	0	0
Total	<u>0</u>	<u>82</u>	<u>38</u>

THE FSU FACT BOOK
STATE FUNDABLE
STUDENT CREDIT HOUR ENROLLMENT BY SCHOOL AND DEPARTMENT
FALL QUARTERS

TABLE II - 1

	<u>1973</u>	<u>1974</u>	<u>1975</u>
College of Communication Totals			
Lower	2179	1927	1883
Upper	3811	6675	7054
Graduate	522	1242	1550
Total	<u>6512</u>	<u>9844</u>	<u>10487</u>
Music			
Lower	7169	6646	6249
Upper	3311	3732	3718
Graduate	1397	1461	1640
Total	<u>11877</u>	<u>11839</u>	<u>11607</u>
Dance			
Lower	658	623	1283
Upper	297	432	603
Graduate	140	158	221
Total	<u>1095</u>	<u>1213</u>	<u>2107</u>
Theatre			
Lower	400	404	390
Upper	1883	2833	2775
Graduate	1363	1583	1354
Total	<u>3646</u>	<u>4820</u>	<u>4519</u>
School of Visual Arts			
Art			
Lower	1263	1428	1320
Upper	4294	3588	3871
Graduate	822	851	877
Total	<u>6379</u>	<u>5867</u>	<u>6068</u>

THE FSU FACT BOOK
STATE FUNDABLE
STUDENT CREDIT HOUR ENROLLMENT BY SCHOOL AND DEPARTMENT
FALL QUARTERS

TABLE II - 1

	<u>1973</u>	<u>1974</u>	<u>1975</u>
Interior Design			
Lower	0	70	102
Upper	1502	2333	2169
Graduate	91	153	167
Total	<u>1593</u>	<u>2556</u>	<u>2438</u>
Art Education & Constructive Design			
Art Education			
Lower	0	0	0
Upper	861	804	750
Graduate	178	157	118
Total	<u>1039</u>	<u>961</u>	<u>868</u>
Constructive Design			
Lower	0	0	0
Upper	549	651	670
Graduate	90	83	43
Total	<u>639</u>	<u>734</u>	<u>713</u>
Art Education & Constructive Design Totals			
Lower	0	0	0
Upper	1410	1455	1420
Graduate	268	240	161
Total	<u>1678</u>	<u>1695</u>	<u>1581</u>
School of Visual Arts Totals			
Lower	1263	1498	1422
Upper	7206	7376	7460
Graduate	1181	1244	1205
Total	<u>9650</u>	<u>10118</u>	<u>10087</u>

THE FSU FACT BOOK
STATE FUNDABLE
STUDENT CREDIT HOUR ENROLLMENT BY SCHOOL AND DEPARTMENT
FALL QUARTERS

TABLE II - 1

	<u>1973</u>	<u>1974</u>	<u>1975</u>
Division IV Totals			
Lower	11669	11098	11227
Upper	16508	21048	21610
Graduate	4603	5688	5970
Total	<u>32780</u>	<u>37834</u>	<u>38807</u>
Slavic & E. European Studies			
Lower	0	0	0
Upper	6	3	3
Graduate	<u>57</u>	<u>20</u>	<u>43</u>
Total	63	23	46
University Totals			
Lower	97908	96942	93517
Upper	124284	128409	128597
Graduate	51592	50217	48396
Total	<u>273784</u>	<u>275568</u>	<u>270510</u>

Source: Student Data Course Files for respective years.

STATE FUNDABLE

STUDENT CREDIT HOURS BY SCHOOL AND DEPARTMENT

FOUR QUARTER AVERAGE

TABLE II - 2

	<u>1973-74</u>	<u>1974-75</u>	<u>1975-76</u>
DIVISION I - ARTS AND SCIENCES			
Anthroplogy			
Lower	1578.00	1254.00	1214.25
Upper	1136.00	1234.25	1106.00
Graduate	335.50	284.00	276.50
Total	<u>3049.50</u>	<u>2772.25</u>	<u>2596.75</u>
Biological Sciences			
Lower	3255.25	3065.75	2544.00
Upper	3302.75	3230.50	2689.50
Graduate	1305.25	1077.00	965.50
Total	<u>7863.25</u>	<u>7373.25</u>	<u>6199.00</u>
Chemistry			
Lower	3465.00	3226.75	3336.00
Upper	1485.50	1672.75	1737.50
Graduate	928.00	938.00	889.75
Total	<u>5878.50</u>	<u>5837.50</u>	<u>5963.25</u>
Classical Lang. & Lit.			
Classical Civ. & Lit.			
Lower	147.00	205.50	168.00
Upper	470.25	449.00	527.25
Graduate	93.00	90.00	86.00
Total	<u>710.25</u>	<u>744.50</u>	<u>781.25</u>

STATE FUNDABLE

STUDENT CREDIT HOURS BY SCHOOL AND DEPARTMENT

FOUR QUARTER AVERAGE

TABLE II - 2

	1973-74	1974-75	1975-76
Classics			
Lower	0	0	0
Upper	0	24.00	0
Graduate	26.75	18.25	12.50
Total	<u>26.75</u>	<u>42.25</u>	<u>12.50</u>
Greek			
Lower	96.00	96.75	96.00
Upper	15.75	17.25	15.00
Graduate	9.75	11.25	9.75
Total	<u>121.50</u>	<u>125.25</u>	<u>120.75</u>
Latin			
Lower	198.75	192.75	156.75
Upper	51.00	42.00	56.75
Graduate	24.25	11.25	7.50
Total	<u>274.00</u>	<u>246.00</u>	<u>221.00</u>
Classical Lang. & Lit. Totals			
Lower	441.75	495.00	420.75
Upper	537.00	532.25	599.00
Graduate	153.75	130.75	115.75
Total	<u>1132.50</u>	<u>1158.00</u>	<u>1135.50</u>
English			
Lower	4972.25	5568.75	5792.00
Upper	2983.00	3176.75	2774.50
Graduate	964.50	751.75	674.75
Total	<u>8919.75</u>	<u>9497.25</u>	<u>9241.25</u>

THE FSU FACT BOOK

STATE FUNDABLE

STUDENT CREDIT HOURS BY SCHOOL AND DEPARTMENT

FOUR QUARTER AVERAGE

TABLE II - 2

	<u>1973-74</u>	<u>1974-75</u>	<u>1975-76</u>
Geology			
Lower	1551.00	1586.75	1170.25
Upper	271.25	239.50	205.50
Graduate	266.00	295.00	248.50
Total	<u>2088.25</u>	<u>2121.25</u>	<u>1624.25</u>
History			
Lower	5175.75	5441.25	5175.00
Upper	3629.50	3438.75	3404.50
Graduate	939.75	850.00	727.00
Total	<u>9745.00</u>	<u>9730.00</u>	<u>9306.50</u>
Humanities			
Lower	2490.00	2479.50	2062.75
Upper	148.50	114.75	96.00
Graduate	260.25	264.75	221.75
Total	<u>2898.75</u>	<u>2859.00</u>	<u>2380.50</u>
Mathematics			
Lower	6395.75	7220.50	7503.25
Upper	1010.50	920.00	1218.25
Graduate	635.00	490.00	363.50
Total	<u>8041.25</u>	<u>8630.50</u>	<u>9085.00</u>
Meteorology			
Lower	1299.50	1306.50	1310.50
Upper	353.50	426.25	230.00
Graduate	402.25	354.50	391.00
Total	<u>2055.25</u>	<u>2087.25</u>	<u>1931.50</u>

THE FSU FACT BOOK
STATE FUNDABLE
STUDENT CREDIT HOURS BY SCHOOL AND DEPARTMENT
FOUR QUARTER AVERAGE
TABLE II - 2

	<u>1973-74</u>	<u>1974-75</u>	<u>1975-76</u>
Modern Languages			
Chinese			
Lower	103.50	81.25	61.25
Upper	10.50	18.00	21.75
Graduate	28.25	39.25	31.25
Total	<u>142.25</u>	<u>138.50</u>	<u>114.25</u>
Czechoslovakian			
Lower	0	0	0
Upper	0	0	0
Graduate	0	0	0
Total	<u>0</u>	<u>0</u>	<u>0</u>
French			
Lower	2136.25	1895.00	1784.75
Upper	228.75	181.50	144.00
Graduate	230.25	166.25	157.50
Total	<u>2595.25</u>	<u>2242.75</u>	<u>2086.25</u>
German			
Lower	1410.00	1303.25	1276.25
Upper	116.25	86.25	92.25
Graduate	120.00	128.50	121.25
Total	<u>1646.25</u>	<u>1518.00</u>	<u>1489.75</u>
Italian			
Lower	948.50	724.50	635.75
Upper	66.00	76.50	30.00
Graduate	22.75	25.50	18.25
Total	<u>1037.25</u>	<u>826.50</u>	<u>684.00</u>

THE FSU FACT BOOK
STATE FUNDABLE
STUDENT CREDIT HOURS BY SCHOOL AND DEPARTMENT

FOUR QUARTER AVERAGE

TABLE II - 2

	<u>1973-74</u>	<u>1974-75</u>	<u>1975-76</u>
Japanese			
Lower	50.75	56.50	36.75
Upper	0	0	0
Graduate	0	0	0
Total	<u>50.75</u>	<u>56.50</u>	<u>36.75</u>
Modern Languages			
Lower	59.75	63.00	47.00
Upper	207.00	157.75	138.00
Graduate	<u>219.75</u>	<u>80.25</u>	<u>60.25</u>
Total	<u>486.50</u>	<u>301.00</u>	<u>245.25</u>
Portuguese			
Lower	3.25	26.50	0
Upper	0	1.50	0
Graduate	0	1.50	3.75
Total	<u>3.25</u>	<u>29.50</u>	<u>3.75</u>
Russian			
Lower	322.00	271.25	271.25
Upper	62.25	48.00	48.75
Graduate	<u>32.00</u>	<u>46.75</u>	<u>37.75</u>
Total	<u>416.25</u>	<u>366.00</u>	<u>357.75</u>
Serbo-Croatian			
Lower	6.75	6.00	2.25
Upper	0	.75	.75
Graduate	<u>1.50</u>	<u>3.75</u>	<u>1.00</u>
Total	<u>8.25</u>	<u>10.50</u>	<u>4.00</u>

THE FSU FACT BOOK
STATE FUNDABLE
STUDENT CREDIT HOURS BY SCHOOL AND DEPARTMENT

FOUR QUARTER AVERAGE

TABLE II - 2

	<u>1973-74</u>	<u>1974-75</u>	<u>1975-76</u>
Slavic			
Lower	0	0	0
Upper	10.50	5.25	6.00
Graduate	<u>10.25</u>	<u>.25</u>	<u>5.00</u>
Total	20.75	5.50	11.00
Spanish			
Lower	2922.00	2558.00	2474.00
Upper	430.00	396.00	314.25
Graduate	<u>246.00</u>	<u>148.50</u>	<u>126.00</u>
Total	3598.00	3102.50	2914.25
Linguistics			
Lower	0	0	0
Upper	0	0	0
Graduate	<u>0</u>	<u>0</u>	<u>0</u>
Total	0	0	0
Modern Lang. Totals			
Lower	7962.75	6985.25	6589.25
Upper	1131.25	971.50	795.75
Graduate	<u>910.75</u>	<u>640.50</u>	<u>562.00</u>
Total	10004.75	8597.25	7947.00
Oceanography			
Lower	71.25	117.75	381.00
Upper	70.75	69.75	37.75
Graduate	<u>680.75</u>	<u>465.75</u>	<u>370.75</u>
Total	822.75	653.25	789.50

THE FSU FACT BOOK

STATE FUNDABLE

STUDENT CREDIT HOURS BY SCHOOL AND DEPARTMENT

FOUR QUARTER AVERAGE

TABLE II - 2

	<u>1973-74</u>	<u>1974-75</u>	<u>1975-76</u>
Philosophy			
Lower	549.00	433.50	518.75
Upper	573.75	379.00	398.00
Graduate	274.25	270.25	257.00
Total	<u>1397.00</u>	<u>1082.75</u>	<u>1173.75</u>
Physics			
Lower	2216.00	2282.25	2145.25
Upper	1037.75	1172.25	1156.75
Graduate	762.25	588.25	569.75
Total	<u>4016.00</u>	<u>4042.75</u>	<u>3871.75</u>
Psychology			
Lower	2637.75	2709.75	2707.50
Upper	7355.25	6358.25	6286.25
Graduate	1711.75	1651.50	1372.75
Total	<u>11704.75</u>	<u>10719.50</u>	<u>10366.50</u>
Religion			
Lower	1735.50	1791.50	1480.25
Upper	1248.00	931.50	828.50
Graduate	209.00	238.00	219.00
Total	<u>3192.50</u>	<u>2961.00</u>	<u>2527.75</u>
Statistics			
Lower	0	0	0
Upper	1210.25	1636.75	1628.25
Graduate	668.50	747.50	806.00
Total	<u>1878.75</u>	<u>2384.25</u>	<u>2434.25</u>

THE FSU FACT BOOK
STATE FUNDABLE
STUDENT CREDIT HOURS BY SCHOOL AND DEPARTMENT

FOUR QUARTER AVERAGE

TABLE II - 2

	<u>1973-74</u>	<u>1974-75</u>	<u>1975-76</u>
Geophysical Fluid Dynamics			
Lower	0	0	0
Upper	0	0	0
Graduate	91.50	53.25	42.25
Total	<u>91.50</u>	<u>53.25</u>	<u>42.25</u>
Molecular Biophysics			
Lower	0	0	0
Upper	0	0	0
Graduate	164.50	175.25	140.75
Total	<u>164.50</u>	<u>175.25</u>	<u>140.75</u>
American Studies			
Lower	0	0	0
Upper	209.50	134.25	36.00
Graduate	18.50	25.25	12.50
Total	<u>228.00</u>	<u>159.50</u>	<u>48.50</u>
Asian Studies			
Lower	0	0	0
Upper	0	0	0
Graduate	25.50	26.50	28.50
Total	<u>25.50</u>	<u>26.50</u>	<u>28.50</u>
Chemical Physics			
Lower	0	0	0
Upper	0	0	0
Graduate	0	0	0
Total	<u>0</u>	<u>0</u>	<u>0</u>

THE FSU FACT BOOK
STATE FUNDABLE
STUDENT CREDIT HOURS BY SCHOOL AND DEPARTMENT

FOUR QUARTER AVERAGE

TABLE II - 2

	<u>1973-74</u>	<u>1974-75</u>	<u>1975-76</u>
Inter-American Studies			
Lower	0	0	0
Upper	0	0	0
Graduate	0	0	0
Total	<u>0</u>	<u>0</u>	<u>0</u>
Honors			
Lower	207.00	83.25	44.25
Upper	0	0	0
Graduate	0	0	0
Total	<u>207.00</u>	<u>83.25</u>	<u>44.25</u>
Military Studies			
Lower	0	0	0
Upper	0	0	0
Graduate	0	0	0
Total	<u>0</u>	<u>0</u>	<u>0</u>
Aerospace Studies			
Lower	0	0	0
Upper	0	0	0
Graduate	0	0	0
Total	<u>0</u>	<u>0</u>	<u>0</u>
Comparative World Literature			
Lower	0	0	0
Upper	0	23.25	27.00
Graduate	0	0	0
Total	<u>0</u>	<u>23.25</u>	<u>27.00</u>

THE FSU FACT BOOK
STATE FUNDABLE
STUDENT CREDIT HOURS BY SCHOOL AND DEPARTMENT
FOUR QUARTER AVERAGE
TABLE II - 2

	<u>1973-74</u>	<u>1974-75</u>	<u>1975-76</u>
Division I - Totals			
Lower	46003.50	46048.00	44395.00
Upper	27694.00	26662.25	25255.00
Graduate	11707.50	10317.75	9255.00
Total	<u>85405.00</u>	<u>83028.00</u>	<u>78905.00</u>
DIVISION II - PROFESSIONAL SCHOOLS AND COLLEGES			
College of Business			
Accounting			
Lower	0	0	0
Upper	3938.75	5001.50	5486.25
Graduate	173.75	206.25	171.50
Total	<u>4112.50</u>	<u>5207.75</u>	<u>5657.75</u>
Business Administration			
Lower	2222.00	2400.75	2450.00
Upper	9179.00	9690.00	10841.00
Graduate	2499.50	2202.00	1973.25
Total	<u>13900.50</u>	<u>14292.75</u>	<u>15264.25</u>
Business Teacher Education			
Lower	503.25	415.50	243.75
Upper	289.25	245.25	271.25
Graduate	0	0	0
Total	<u>792.50</u>	<u>660.75</u>	<u>515.00</u>

THE FSU FACT BOOK
STATE FUNDABLE
STUDENT CREDIT HOURS BY SCHOOL AND DEPARTMENT
FOUR QUARTER AVERAGE
TABLE II - 2

	1973-74	1974-75	1975-76.
Business Law			
Lower	0	0	0
Upper	670.25	718.00	643.00
Graduate	0	0	0
Total	<u>670.25</u>	<u>718.00</u>	<u>643.00</u>
Finance			
Lower	0	0	0
Upper	781.00	829.75	1021.25
Graduate	0	0	0
Total	<u>781.00</u>	<u>829.75</u>	<u>1021.25</u>
Hotel and Restaurant Administration			
Lower	0	0	0
Upper	1070.00	1242.00	1453.50
Graduate	0	0	0
Total	<u>1070.00</u>	<u>1242.00</u>	<u>1453.50</u>
Risk & Insurance			
Lower	0	0	0
Upper	651.75	1044.00	1174.00
Graduate	1.50	0	0
Total	<u>653.25</u>	<u>1044.00</u>	<u>1174.00</u>
Management			
Lower	0	0	0
Upper	1298.00	1151.00	1134.00
Graduate	0	0	0
Total	<u>1298.00</u>	<u>1151.00</u>	<u>1134.00</u>

THE FSU FACT BOOK
STATE FUNDABLE
STUDENT CREDIT HOURS BY SCHOOL AND DEPARTMENT
FOUR QUARTER AVERAGE
TABLE II - 2

	<u>1973-74</u>	<u>1974-75</u>	<u>1975-76</u>
Marketing			
Lower	0	0	0
Upper	1277.75	1349.00	1526.00
Graduate	0	0	0
Total	<u>1277.75</u>	<u>1349.00</u>	<u>1526.00</u>
Office Management			
Lower	0	0	0
Upper	125.25	162.75	109.50
Graduate	0	0	0
Total	<u>125.25</u>	<u>162.75</u>	<u>109.50</u>
Multi-national			
Business Operations			
Lower	0	0	0
Upper	128.00	260.00	257.00
Graduate	0	0	0
Total	<u>128.00</u>	<u>260.00</u>	<u>257.00</u>
College of Business - Totals			
Lower	2725.25	2816.25	2693.75
Upper	19409.00	21693.25	23916.75
Graduate	2674.75	2408.25	2144.75
Total	<u>24809.00</u>	<u>26917.75</u>	<u>28755.25</u>
College of Education			
Area of Ed. Mgt. Systems Totals			
Lower	115.50	0	0
Upper	2631.25	2992.00	2810.50
Graduate	5828.50	5706.50	5649.00
Total	<u>8575.25</u>	<u>8698.50</u>	<u>8459.50</u>

THE FSU FACT BOOK
STATE FUNDABLE
STUDENT CREDIT HOURS BY SCHOOL AND DEPARTMENT
FOUR QUARTER AVERAGE
TABLE II - 2

	<u>1973-74</u>	<u>1974-75</u>	<u>1975-76</u>
Area of Instructional Design and Personnel Development Totals			
Lower	0	16.00	14.00
Upper	7446.00	8166.50	7816.25
Graduate	2766.75	3268.25	2766.75
Total	<u>10212.75</u>	<u>11450.75</u>	<u>10597.00</u>
Area of Professional and Clerical Programs Totals			
Lower	1283.50	1069.00	964.75
Upper	7829.75	7380.50	7507.50
Graduate	2905.75	2976.75	2879.25
Total	<u>12019.00</u>	<u>11426.25</u>	<u>11351.50</u>
College of Education Totals			
Lower	1399.00	1085.00	978.75
Upper	17907.00	18539.00	18134.25
Graduate	<u>11501.00</u>	<u>11951.50</u>	<u>11295.00</u>
Total	30807.00	31575.50	30408.00
School of Home Economics Clothing and Textiles			
Lower	756.50	804.25	855.00
Upper	1214.25	1421.50	1492.00
Graduate	80.75	120.00	80.00
Total	<u>2051.50</u>	<u>2345.75</u>	<u>2427.00</u>
Food and Nutrition			
Lower	573.75	823.50	763.50
Upper	866.75	890.75	852.50
Graduate	<u>124.00</u>	<u>137.25</u>	<u>130.50</u>
Total	<u>1564.50</u>	<u>1851.50</u>	<u>1746.50</u>

STATE FUNDABLE

STUDENT CREDIT HOURS BY SCHOOL AND DEPARTMENT

FOUR QUARTER AVERAGE

TABLE II - 2

	1973-74	1974-75	1975-76
Home and Family Life			
Lower	0	0	0
Upper	2994.75	2416.50	2258.75
Graduate	456.00	435.00	473.75
Total	3450.75	2851.50	2732.50
Home Economics Education			
Lower	0	0	0
Upper	544.00	611.50	669.00
Graduate	289.00	402.00	339.25
Total	833.00	1013.50	1008.25
General Home Economics			
Lower	.75	0	0
Upper	105.25	210.50	0
Graduate	75.25	46.25	32.50
Total	181.25	256.75	32.50
School of Home Economics Totals			
Lower	1331.00	1627.75	1618.50
Upper	5725.00	5550.75	5272.25
Graduate	1025.00	1140.50	1056.00
Total	8081.00	8319.00	7946.75
Library Science			
Lower	58.75	67.50	44.00
Upper	692.00	677.50	582.50
Graduate	2062.75	1977.25	1808.75
Total	2813.50	2722.25	2435.25

THE FSU FACT BOOK
STATE FUNDABLE
STUDENT CREDIT HOURS BY SCHOOL AND DEPARTMENT
FOUR QUARTER AVERAGE
TABLE II - 2

	<u>1973-74</u>	<u>1974-75</u>	<u>1975-76</u>
Nursing			
Lower	0	0	0
Upper	3838.50	3064.25	2662.75
Graduate	0	0	0
Total	<u>3838.50</u>	<u>3064.25</u>	<u>2662.75</u>
Division II - Totals			
Lower	5514.00	5596.50	5335.00
Upper	47571.50	49524.75	50568.50
Graduate	17263.50	17477.50	16304.50
Total	<u>70349.00</u>	<u>72598.75</u>	<u>72208.00</u>
DIVISION III - SOCIAL SCIENCES AND LAW			
Criminology			
Lower	0	.50	1.75
Upper	5156.25	5245.50	5916.75
Graduate	566.50	959.25	926.75
Total	<u>5722.75</u>	<u>6205.25</u>	<u>6845.25</u>
Law			
Lower	0	0	0
Upper	0	0	0
Graduate	5139.25	4874.25	5144.75
Total	<u>5139.25</u>	<u>4874.25</u>	<u>5144.75</u>
College of Social Sciences			
Economics			
Lower	3129.50	3184.50	3521.25
Upper	706.75	896.75	1000.00
Graduate	623.00	471.50	460.00
Total	<u>4459.25</u>	<u>4552.75</u>	<u>4981.25</u>

THE FSU FACT BOOK
STATE FUNDABLE
STUDENT CREDIT HOURS BY SCHOOL AND DEPARTMENT
FOUR QUARTER AVERAGE
TABLE II - 2

	<u>1973-74</u>	<u>1974-75</u>	<u>1975-76</u>
Geography			
Lower	1001.00	1216.50	1095.75
Upper	757.75	728.25	690.75
Graduate	167.50	175.50	171.50
Total	<u>1926.25</u>	<u>2120.25</u>	<u>1958.00</u>
Government			
Lower	1817.00	1554.75	1352.25
Upper	3162.75	3031.00	3358.75
Graduate	1027.00	1160.50	1351.00
Total	<u>6006.75</u>	<u>5746.25</u>	<u>6062.00</u>
International Affairs			
Lower	0	0	0
Upper	7.50	1.50	9.75
Graduate	7.00	1.50	4.25
Total	<u>14.50</u>	<u>3.00</u>	<u>14.00</u>
Social Sciences			
Lower	0	0	8.25
Upper	118.50	67.75	2.25
Graduate	3.75	3.00	4.50
Total	<u>122.25</u>	<u>70.75</u>	<u>15.00</u>
Sociology			
Lower	1946.25	1916.25	1921.50
Upper	2264.75	2454.75	2273.00
Graduate	862.25	656.25	601.75
Total	<u>5073.25</u>	<u>5027.25</u>	<u>4796.25</u>

THE FSU FACT BOOK
STATE FUNDABLE
STUDENT CREDIT HOURS BY SCHOOL AND DEPARTMENT
FOUR QUARTER AVERAGE
TABLE II - 2

	<u>1973-74</u>	<u>1974-75</u>	<u>1975-76</u>
Urban & Regional Planning			
Lower	0	0	0
Upper	0	59.25	57.00
Graduate	1229.00	1370.50	1056.50
Total	<u>1229.00</u>	<u>1429.75</u>	<u>1113.50</u>
Public Administration			
Lower	0	0	0
Upper	0	0	0
Graduate	0	0	0
Total	<u>0</u>	<u>0</u>	<u>0</u>
College of Social Science Totals			
Lower	7893.75	7872.00	7899.00
Upper	7018.00	7239.25	7391.50
Graduate	3919.50	3838.75	3649.50
Total	<u>18831.25</u>	<u>18950.00</u>	<u>18940.00</u>
Social Work			
Lower	58.00	81.50	62.00
Upper	3035.25	3089.25	3101.50
Graduate	1963.50	2133.00	2323.25
Total	<u>5056.75</u>	<u>5303.75</u>	<u>5486.75</u>
Division III - Totals			
Lower	7951.75	7954.00	7962.75
Upper	15209.50	15574.00	16409.75
Graduate	11588.75	11805.25	12044.25
Total	<u>34750.00</u>	<u>35333.25</u>	<u>36416.75</u>

THE FSU FACT BOOK
STATE FUNDABLE
STUDENT CREDIT HOURS BY SCHOOL AND DEPARTMENT
FOUR QUARTER AVERAGE
TABLE II - 2

	<u>1973-74</u>	<u>1974-75</u>	<u>1975-76</u>
DIVISION IV - COMMUNICATIONS, FINE & APPLIED ARTS			
College of Communications			
Advertising and Public Relations			
Lower	0	0	0
Upper	446.00	512.00	133.00
Graduate	0	0	0
Total	<u>446.00</u>	<u>512.00</u>	<u>133.00</u>
Audiology and Speech Pathology			
Lower	6.00	0	0
Upper	752.50	1273.00	1152.00
Graduate	288.50	717.75	866.00
Total	<u>1047.00</u>	<u>1990.75</u>	<u>2018.00</u>
Mass Communications			
Lower	842.75	376.50	217.50
Upper	2156.75	2338.25	3042.25
Graduate	371.25	296.50	264.50
Total	<u>3370.75</u>	<u>3011.25</u>	<u>3524.25</u>
Speech Communications			
Lower	513.00	756.50	868.00
Upper	1261.00	1643.50	1813.00
Graduate	114.00	260.50	256.50
Total	<u>1888.00</u>	<u>2660.50</u>	<u>2937.50</u>
Instructional Communication			
Lower	0	18.00	36.75
Upper	0	94.25	32.75
Graduate	0	0	3.75
Total	<u>0</u>	<u>112.25</u>	<u>73.25</u>
	-82-		

THE FSU FACT BOOK
STATE FUNDABLE
STUDENT CREDIT HOURS BY SCHOOL AND DEPARTMENT

FOUR QUARTER AVERAGE

TABLE II - 2

	<u>1973-74</u>	<u>1974-75</u>	<u>1975-76</u>
College of Communication Totals			
Lower	1361.75	1151.00	1122.25
Upper	4616.25	5861.00	6173.00
Graduate	773.75	1274.75	1390.75
Total	<u>6751.75</u>	<u>8286.75</u>	<u>8686.00</u>
Music			
Lower	4846.25	4730.00	4575.50
Upper	2737.75	3046.25	2994.75
Graduate	<u>1176.00</u>	<u>1422.25</u>	<u>1430.75</u>
Total	<u>8760.00</u>	<u>9198.50</u>	<u>9001.00</u>
Dance			
Lower	424.75	449.25	978.75
Upper	271.25	356.75	485.00
Graduate	<u>111.50</u>	<u>147.50</u>	<u>202.75</u>
Total	<u>807.50</u>	<u>953.50</u>	<u>1666.50</u>
Theatre			
Lower	361.50	350.50	342.00
Upper	1830.50	2156.25	2761.75
Graduate	<u>979.00</u>	<u>1292.50</u>	<u>1190.00</u>
Total	<u>3171.00</u>	<u>3799.25</u>	<u>4293.75</u>
School of Visual Arts			
Art			
Lower	968.25	1041.75	964.50
Upper	3504.75	3434.00	3269.50
Graduate	<u>686.50</u>	<u>677.50</u>	<u>672.50</u>
Total	<u>5159.50</u>	<u>5153.25</u>	<u>4906.50</u>

THE FSU FACT BOOK
STATE FUNDABLE
STUDENT CREDIT HOURS BY SCHOOL AND DEPARTMENT
FOUR QUARTER AVERAGE
TABLE II - 2

	<u>1973-74</u>	<u>1974-75</u>	<u>1975-76</u>
Interior Design			
Lower	0	44.00	54.50
Upper	1121.00	1690.75	1783.75
Graduate	55.50	124.25	176.00
Total	<u>1176.50</u>	<u>1859.00</u>	<u>2014.25</u>
Art Education & Constructive Design			
Art Education			
Lower	0	0	0
Upper	917.75	716.25	623.50
Graduate	116.25	101.00	92.25
Total	<u>1034.00</u>	<u>817.25</u>	<u>715.75</u>
Constructive Design			
Lower	0	0	0
Upper	474.00	564.75	603.00
Graduate	75.50	89.25	71.25
Total	<u>549.50</u>	<u>654.00</u>	<u>674.25</u>
Art Education & Constructive Design Totals			
Lower	0	0	0
Upper	1391.75	1281.00	1226.50
Graduate	191.75	190.25	163.50
Total	<u>1583.50</u>	<u>1471.25</u>	<u>1390.00</u>
School of Visual Arts Totals			
Lower	968.25	1085.75	1019.00
Upper	6017.50	6405.75	6279.75
Graduate	933.75	992.00	1012.00
Total	<u>7919.50</u>	<u>8483.50</u>	<u>8310.75</u>

THE FSU FACT BOOK
STATE FUNDABLE
STUDENT CREDIT HOURS BY SCHOOL AND DEPARTMENT
FOUR QUARTER AVERAGE
TABLE II - 2

	<u>1973-74</u>	<u>1974-75</u>	<u>1975-76</u>
Division IV Totals			
Lower	7962.50	7766.50	8037.50
Upper	15473.25	17826.00	18694.25
Graduate	3974.00	5129.00	5226.25
Total	<u>27409.75</u>	<u>30721.50</u>	<u>31958.00</u>
Slavic & E. European Studies			
Lower	0	0	0
Upper	7.50	1.50	2.25
Graduate	89.75	93.50	114.00
Total	<u>97.25</u>	<u>95.00</u>	<u>116.25</u>
University Totals			
Lower	67431.75	67365.00	65730.25
Upper	105955.75	109588.50	110929.75
Graduate	44623.50	44823.00	42944.00
Total	<u>218011.00</u>	<u>221776.50</u>	<u>219604.00</u>

Source: Student Data Course Files for respective years.

THE FSU FACT BOOK
Table II-3
GEOGRAPHICAL ORIGIN OF FSU STUDENTS BY
FLORIDA COUNTY, Fall 1976

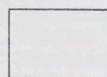
Alachua	210	Lafayette	8
Baker	13	Lake	110
Bay	264	Lee	191
Bradford	18	Leon	4,017
Brevard	630	Levy	17
Broward	1,227	Liberty	19
Calhoun	28	Madison	80
Charlotte	35	Manatee	195
Citrus	42	Marion	139
Clay	109	Martin	68
Collier	102	Monroe	85
Columbia	49	Nassau	33
Dade	2,377	Okaloosa	387
DeSoto	6	Okeechobee	15
Dixie	5	Orange	793
Duval	1,251	Osceola	27
Escambia	340	Palm Beach	758
Flagler	6	Pasco	58
Franklin	25	Pinellas	1,106
Gadsden	181	Polk	365
Gilchrist	8	Putnam	49
Glades	1	Santa Rosa	54
Gulf	16	Seminole	217
Hamilton	13	Sarasota	360
Hardee	14	St. Johns	70
Hendry	8	St. Lucie	67
Hernando	40	Sumter	15
Highlands	46	Suwannee	27
Hillsborough	724	Taylor	93
Holmes	28	Union	15
Indian River	76	Volusia	292
Jackson	137	Wakulla	39
Jefferson	82	Walton	43
		Washington	38
		TOTAL	17,961

Source: Fall 1976 (Preliminary) Student Data Course File

THE FLORIDA STATE UNIVERSITY
FACT BOOK
CONTRIBUTION BY COUNTIES
HEADCOUNT STUDENTS, FALL 1976

Map II-3

LEGEND



1 - 50 Students



51 - 99 Students



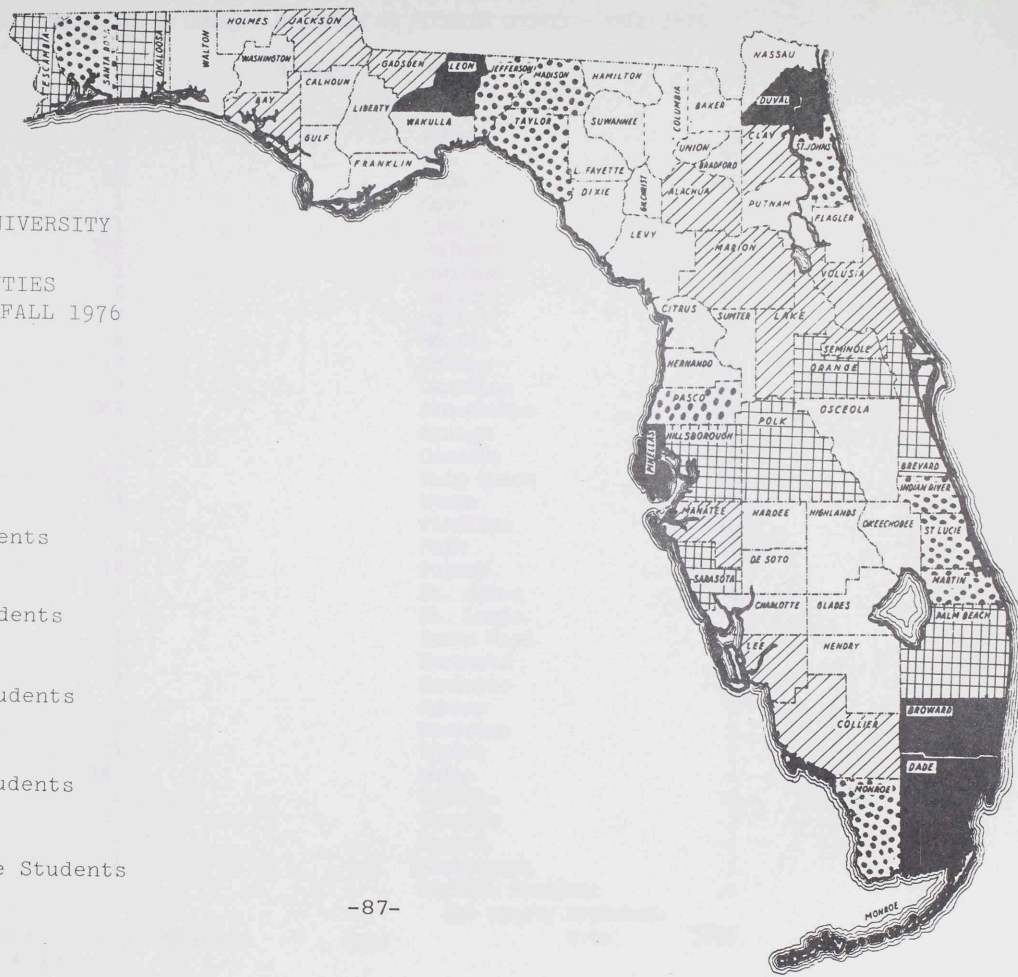
100 - 300 Students



301 - 999 Students



1000 or more Students



THE FSU FACT BOOK

FIRST TIME IN COLLEGE STUDENTS BY FLORIDA COUNTY - FALL 1976

TABLE II - 4

Alachua	22	Lake	5
Baker	1	Lee	21
Bay	21	Leon	165
Bradford	1	Levy	1
Brevard	71	Liberty	3
Broward	238	Madison	3
Calhoun	2	Manatee	16
Charlotte	5	Marion	18
Citrus	7	Martin	8
Clay	19	Monroe	16
Collier	18	Nassau	5
Columbia	3	Okaloosa	52
Dade	362	Okeechobee	4
DeSoto	2	Orange	109
Dixie	-	Osceola	5
Duval	153	Palm Beach	74
Escambia	34	Pasco	12
Flagler	-	Pinellas	116
Franklin	2	Polk	54
Gadsden	14	Putnam	2
Gilchrist	1	St. Johns	4
Glades	-	St. Lucie	7
Gulf	1	Santa Rosa	5
Hamilton	1	Sarasota	64
Hardee	2	Seminole	37
Hendry	-	Sumter	1
Hernando	5	Suwannee	2
Highlands	11	Taylor	7
Hillsborough	147	Union	-
Holmes	1	Volusia	31
Indian River	11	Wakulla	3
Jackson	8	Walton	4
Jefferson	6	Washington	1
Lafayette	-	Florida Resident	16
		(no county reported)	
		Total	2040

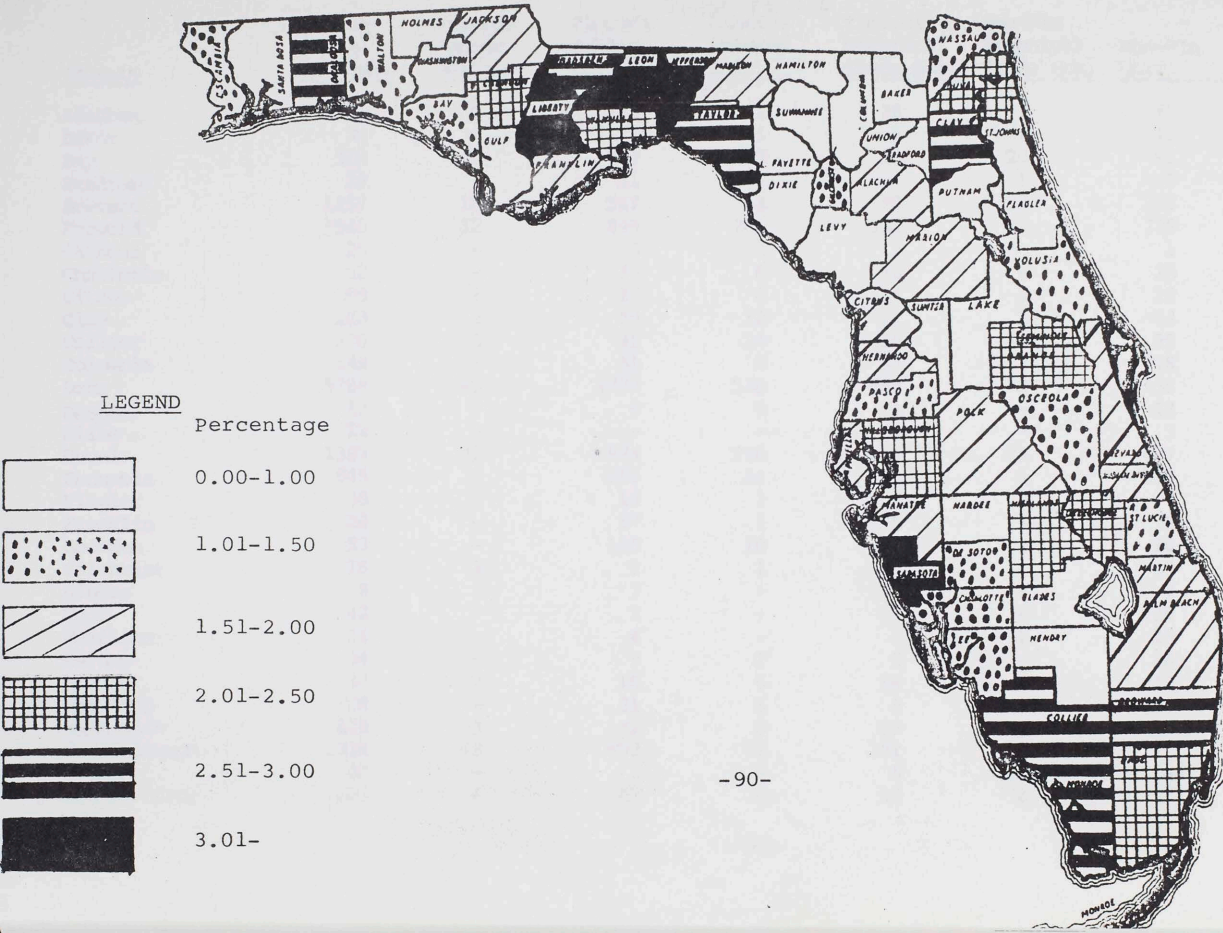
Source: Fall 1976 (Preliminary) Student
Data Course File

[illegible]

THE FLORIDA STATE UNIVERSITY
FACT BOOK

Percentage of 1975-76 Florida High School Graduates
Attending FSU as first time in college students,
Fall 1976, (by county).

MAP II - 4 - B



THE FSU FACT BOOK

DESTINATION OF 1975-76 FLORIDA HIGH SCHOOL
TWELFTH GRADE GRADUATES CONTINUING THEIR EDUCATION

TABLE II - 5

<u>County</u>	<u>Public Junior Colleges</u>	<u>Private Junior Colleges</u>	<u>Florida Public Univ.</u>	<u>Florida Private Univ.</u>	<u>Florida Technical Trade Sch.</u>	<u>Non-Fla Technical Trade Sch.</u>	<u>Non-Fla Univ.</u>	<u>Total</u>
Alachua	371	6	143	12	24	1	59	616
Baker	34	-	5	1	1	-	11	52
Bay	318	5	147	13	56	20	96	655
Bradford	29	-	11	-	-	1	7	48
Brevard	1257	18	517	88	70	28	283	2261
Broward	1843	32	847	254	338	65	725	4104
Calhoun	29	-	3	2	1	-	1	36
Charlotte	32	-	25	6	10	-	26	99
Citrus	90	2	17	6	14	3	12	144
Clay	132	2	59	22	11	7	43	276
Collier	100	6	80	24	25	13	95	343
Columbia	149	-	51	3	37	2	18	260
Dade	5389	85	1722	536	653	79	1156	9620
DeSoto	12	-	9	4	1	-	13	39
Dixie	22	-	-	-	1	-	3	26
Duval	1369	32	574	236	117	21	437	2786
Escambia	845	2	156	14	89	5	239	1350
Flagler	30	-	14	3	4	-	4	55
Franklin	20	-	17	1	5	1	5	49
Gadsden	53	-	110	10	80	1	26	280
Gilchrist	16	2	1	1	3	-	3	26
Glades	8	1	7	-	-	-	7	23
Gulf	42	-	2	-	7	-	18	69
Hamilton	15	-	4	-	2	1	13	35
Hardee	34	-	9	2	2	-	10	57
Hendry	34	2	10	6	16	4	10	82
Hernando	28	-	21	5	9	1	11	75
Highlands	135	3	42	6	23	3	26	238
Hillsborough	1324	48	802	77	291	34	271	2847
Holmes	43	-	2	-	5	3	4	57
Indian River	167	6	47	8	14	4	57	303

THE FSU FACT BOOK

DESTINATION OF 1975-76 FLORIDA HIGH SCHOOL
TWELFTH GRADE GRADUATES CONTINUING THEIR EDUCATION

	Public Junior Colleges	Private Junior Colleges	Florida Public Univ.	Florida Private Univ.	Florida Technical Trade Sch.	Non-Fla Technical Trade Sch.	Non-Fla Univ.	Total
Jackson	167	2	19	4	9	9	27	237
Jefferson	9	-	21	6	10	2	6	54
Lafayette	18	-	-	-	1		1	20
Lake	284	3	45	25	57	6	67	487
Lee	428	14	132	29	99	13	132	847
Leon	244	5	291	20	39	9	95	703
Levy	43	-	7	1	1	-	9	61
Liberty	15	-	2	1	2	-	1	21
Madison	60	-	12	-	2	5	5	84
Manatee	332	-	59	16	49	6	61	523
Marion	546	19	92	4	27	2	72	762
Martin	122	-	34	18	5	7	30	216
Monroe	145	-	59	11	14	5	36	270
Nassau	55	4	33	10	13	4	35	154
Okaloosa	506	1	143	79	200	26	201	1156
Okeechobee	35	-	9	2	1	-	6	53
Orange	1129	54	845	217	192	44	376	2857
Osceola	25	-	34	13	8	2	24	106
Palm Beach	1362	34	512	121	147	32	470	2678
Pasco	211	8	104	18	44	9	39	433
Pinellas	2153	19	915	178	430	24	436	4155
Polk	724	13	228	92	153	22	236	1468
Putnam	157	-	20	9	41	12	10	249
St. Johns	65	4	35	18	27	3	14	166
St. Lucie	167	-	66	12	5	7	22	279
Santa Rosa	327	-	34	3	94	11	73	542
Sarasota	309	10	243	48	85	12	175	882
Seminole	447	3	317	49	61	7	100	984
Sumter	36	-	7	2	5	1	7	58
Suwannee	53	-	16	1	3	2	10	85
Taylor	48	1	24	2	1	1	1	78

THE FSU FACT BOOK

DESTINATION OF 1975-76 FLORIDA HIGH SCHOOL
TWELFTH GRADE GRADUATES CONTINUING THEIR EDUCATION

	Public Junior Colleges	Private Junior Colleges	Florida Public Univ.	Florida Private Univ.	Florida Technical Trade Sch.	Non-Fla Technical Trade Sch.	Non-Fla Univ.	Total
Union	21	-	2	4	-	-	3	30
Volusia	763	-	263	83	28	6	97	1240
Wakulla	11	-	8	4	12	-	2	37
Walton	57	-	11	2	3	7	13	93
Washington	60	-	7	9	5	1	10	92
Total	25104	446	10103	2451	3782	594	6591	49071

Source: Department of Education
State of Florida

THE FSU FACT BOOK

TABLE II - 6

FSU PERCENTAGE OF 1975-76 FLORIDA HIGH SCHOOL GRADUATES
CONTINUING THEIR EDUCATION AT ANY UNIVERSITY INSIDE
OR OUTSIDE OF FLORIDA, BY COUNTY

Alachua	10.28	Lake	3.65
Baker	5.88	Lee	7.17
Bay	8.20	Leon	40.64
Bradford	5.56	Levy	5.88
Brevard	8.00	Liberty	12.50
Broward	13.03	Madison	17.65
Calhoun	33.33	Manatee	11.76
Charlotte	8.77	Marion	10.71
Citrus	20.00	Martin	9.76
Clay	15.32	Monroe	15.09
Collier	9.05	Nassau	6.41
Columbia	4.17	Okaloosa	12.29
Dade	10.43	Okeechobee	23.53
DeSoto	7.69	Orange	7.58
Dixie	-	Osceola	7.04
Duval	12.27	Palm Beach	6.71
Escambia	8.31	Pasco	7.45
Flagler	-	Pinellas	7.59
Franklin	8.70	Polk	9.71
Gadsden	9.59	Putnam	5.13
Gilchrist	20.00	St. Johns	6.35
Glades	-	St. Lucie	7.00
Gulf	5.00	Santa Rosa	4.55
Hamilton	5.88	Sarasota	13.73
Hardee	9.52	Seminole	7.94
Hendry	-	Sumter	6.25
Hernando	13.51	Suwannee	7.41
Highlands	14.86	Taylor	25.93
Hillsborough	12.78	Union	-
Holmes	16.67	Volusia	7.00
Indian River	9.09	Wakulla	21.43
Jackson	16.00	Walton	15.38
Jefferson	18.18	Washington	3.85
Lafayette	-	State of Florida Total	10.45

Source: Department of Education, State of Florida

THE FSU FACT BOOK

FSU PERCENTAGE SHARE OF 1975-76 FLORIDA HIGH SCHOOL GRADUATES CONTINUING THEIR EDUCATION
IN THE STATE UNIVERSITY SYSTEM OF FLORIDA BY COUNTY

TABLE II - 7

Alachua	15.38	Lake	11.11
Baker	20.00	Lee	15.91
Bay	14.29	Leon	56.70
Bradford	9.09	Levy	14.29
Brevard	13.73	Liberty	100.00
Broward	28.10	Madison	25.00
Calhoun	66.67	Manatee	27.12
Charlotte	20.00	Marion	19.57
Citrus	41.18	Martin	23.53
Clay	32.20	Monroe	27.12
Collier	22.50	Nassau	15.15
Columbia	5.88	Okaloosa	36.36
Dade	20.67	Okeechobee	44.44
DeSoto	22.22	Orange	12.90
Dixie	-	Osceola	14.71
Duval	26.66	Palm Beach	14.45
Escambia	21.79	Pasco	11.54
Flagler	-	Pinellas	12.68
Franklin	11.76	Polk	23.68
Gadsden	12.73	Putnam	10.00
Gilchrist	100.00	St. Johns	11.43
Glades	-	St. Lucie	10.61
Gulf	50.00	Santa Rosa	14.71
Hamilton	25.00	Sarasota	26.34
Hardee	22.22	Seminole	11.67
Hendry	-	Sumter	14.29
Hernando	23.81	Suwannee	12.50
Highlands	26.19	Taylor	29.17
Hillsborough	18.33	Union	-
Holmes	50.00	Volusia	11.79
Indian River	23.40	Wakulla	37.50
Jackson	42.11	Walton	36.36
Jefferson	28.57	Washington	14.29
Lafayette	-		
		State of Florida Total	19.81

Source: Department of Education, State of Florida

[illegible]

0 - 9.99%

00 - 19.99%

20.00 - 29.99%

30.00 - 49.99%

50.00 -100.00%

THE FSU FACT BOOK

FSU PERCENTAGE SHARE OF 1975-76 FLORIDA HIGH SCHOOL GRADUATES CONTINUING THEIR EDUCATION
(UNIVERSITY, JUNIOR COLLEGE, TECHNICAL-TRADE SCHOOL) BY COUNTY

TABLE II - 8

Alachua	3.57	Lake	1.03
Baker	1.92	Lee	2.48
Bay	3.21	Leon	23.47
Bradford	2.08	Levy	1.64
Brevard	3.14	Liberty	14.29
Broward	5.80	Madison	3.57
Calhoun	5.56	Manatee	3.06
Charlotte	5.05	Marion	2.36
Citrus	4.86	Martin	3.70
Clay	6.88	Monroe	5.93
Collier	5.25	Nassau	3.25
Columbia	1.15	Okaloosa	4.50
Dade	3.76	Okeechobee	7.55
DeSoto	5.13	Orange	3.82
Dixie	-	Osceola	4.72
Duval	5.49	Palm Beach	2.76
Escambia	2.52	Pasco	2.77
Flagler	-	Pinellas	2.79
Franklin	4.08	Polk	3.68
Gadsden	5.00	Putnam	.80
Gilchrist	3.85	St. Johns	2.41
Glades	-	St. Lucie	2.51
Gulf	1.45	Santa Rosa	.92
Hamilton	2.86	Sarasota	7.26
Hardee	3.51	Seminole	3.76
Hendry	-	Sumter	1.72
Hernando	6.67	Suwannee	2.35
Highlands	4.62	Taylor	8.97
Hillsborough	5.16	Union	-
Holmes	1.75	Volusia	2.50
Indian River	3.63	Wakulla	8.11
Jackson	3.38	Walton	4.30
Jefferson	11.11	Washington	1.09
Lafayette	-		

State of Florida total 4.08

Source: Department of Education, State of Florida

THE FSU FACT BOOK

TABLE II - 9

Florida Community/Junior College Students Transferring to FSU, Fall Quarters
Headcount Enrollment and Per Cent of Total Junior College Transfers

	1971		1972		1973		1974		1975	
	Enr.	%	Enr.	%	Enr.	%	Enr.	%	Enr.	%
Brevard Community College	61	3.78	80	4.73	99	5.64	79	4.67	78	4.68
Broward Community College	78	4.83	87	5.14	99	5.64	104	6.14	100	6.00
Central Florida Comm. Coll.	28	1.73	41	2.42	24	1.37	20	1.18	30	1.80
Chipola Junior College	49	3.03	68	4.08	79	4.50	49	2.89	59	3.54
Daytona Beach Comm. Coll.	43	2.66	40	2.36	37	2.11	31	1.83	43	2.58
Edison Junior College	35	2.17	37	2.19	39	2.22	33	1.95	34	2.04
Fla. Jr. Coll. at Jacksonville	101	6.25	74	4.37	99	5.64	108	6.37	105	6.31
Fla. Keys Community College	4	.25	12	.71	11	.63	6	.35	4	.24
Gulf Coast Community College	50	3.10	66	3.90	70	3.99	56	3.30	55	3.30
Hillsborough Community College	14	.87	10	.59	16	.91	27	1.59	31	1.86
Indian River Community College	19	1.18	19	1.12	29	1.65	30	1.77	26	1.56
Lake City Community College	12	.74	17	1.01	16	.91	22	1.30	11	.66
Lake Sumter Community College	27	1.67	23	1.36	27	1.54	18	1.06	6	.36
Manatee Junior College	41	2.54	40	2.36	80	4.56	87	5.13	62	3.72
Miami-Dade Junior College	335	20.74	296	17.49	292	16.63	293	17.29	311	18.67
North Florida Junior College	93	5.76	77	4.55	76	4.33	50	2.95	38	2.28
Okaloosa-Walton Jr. College	39	2.41	45	2.66	37	2.11	27	1.59	39	2.34
Palm Beach Junior College	68	4.21	94	5.56	87	4.95	80	4.72	99	5.94
Pensacola Junior College	48	2.97	61	3.61	46	2.62	60	3.54	47	2.82
Polk County Community College	50	3.10	52	3.07	33	1.87	36	2.12	33	1.98
St. Johns Community College	20	1.24	35	2.07	28	1.59	22	1.30	16	.96
St. Petersburg Junior College	144	8.92	155	9.16	131	7.46	182	10.74	155	9.31
Sante Fe Junior College	38	2.35	35	2.07	33	1.87	36	2.12	36	2.16
Seminole Junior College	29	1.80	24	1.42	30	1.71	26	1.53	24	1.44
South Florida Jr. College	7	.43	9	.53	10	.57	3	.18	1	.06

THE FSU FACT BOOK

Florida Community/Junior College Students Transferring to FSU, Fall Quarter Headcount Enrollment and Percent of Total Junior College Transfers

	1971		1972		1973		1974		1975	
	Enr.	%	Enr.	%	Enr.	%	Enr.	%	Enr.	%
Tallahassee Comm. College	154	9.54	160	9.46	190	10.82	180	10.62	172	10.33
Valencia Community College	28	1.73	34	2.01	38	2.16	30	1.77	51	3.06
	<hr/>	<hr/>	<hr/>	<hr/>	<hr/>	<hr/>	<hr/>	<hr/>	<hr/>	<hr/>
Total	<u>1615</u>	100.00	<u>1691</u>	100.00	<u>1756</u>	100.00	<u>1695</u>	100.00	<u>1666</u>	100.00

"Geographic Distribution Report" - Fall Quarters 1971-74;
Board of Regents, Transfer Student Report, 1975

THE FSU FACT BOOK

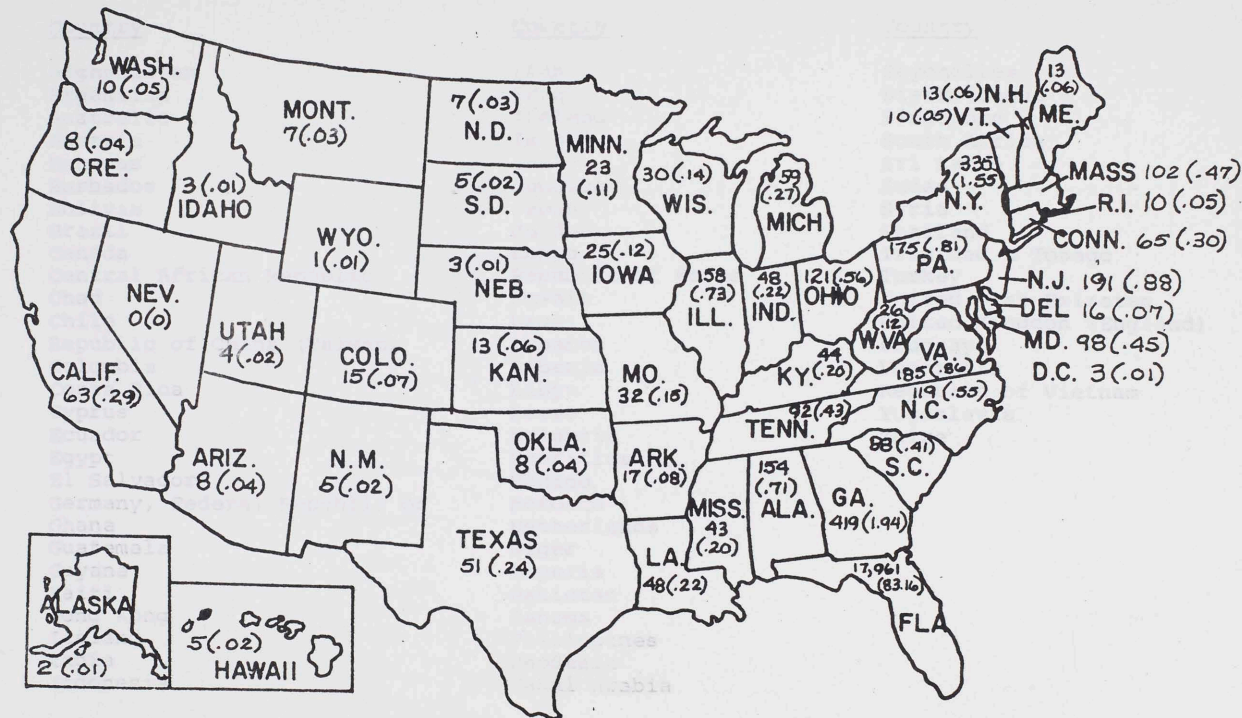
U.S. SOURCES OF FSU ENROLLMENT FALL, 1976

TABLE II - 10

Florida	17,961	Arkansas	17
Georgia	419	Delaware	16
New York	335	Colorado	15
New Jersey	191	Kansas	13
Virginia	185	Maine	13
Pennsylvania	175	New Hampshire	13
Illinois	158	Rhode Island	10
Alabama	154	Vermont	10
Ohio	121	Washington	10
North Carolina	119	Arizona	8
Massachusetts	102	Oklahoma	8
Maryland	98	Oregon	8
Tennessee	92	Montana	7
South Carolina	88	North Dakota	7
Connecticut	65	New Mexico	5
California	63	Hawaii	5
Michigan	59	South Dakota	5
Texas	51	Utah	4
Louisiana	48	District of Columbia	3
Indiana	48	Idaho	3
Kentucky	44	Nebraska	3
Mississippi	43	Alaska	2
Missouri	32	Wyoming	1
Wisconsin	30	Nevada	0
West Virginia	26		
Iowa	25		
Minnesota	23		
		Total	20,941

Source: Fall 1976 (Preliminary) Student Data Course File

ENROLLMENT AND PERCENT CONTRIBUTION TO FSU
TOTAL ENROLLMENT BY STATE



THE FSU FACT BOOK

TABLE II-11

FALL QUARTER, 1976--INTERNATIONAL STUDENTS--
COUNTRY OF ORIGIN

<u>Country</u>	<u>Country</u>	<u>Country</u>
Afghanistan	Iran	Seychelles
Argentina	Iraq	Sierra Leone
Australia	Ireland	Singapore
Austria	Israel	South Africa
Bahamas	Italy	Sri Lanka
Barbados	Jamaica	Sudan
Bolivia	Japan	Syria
Brazil	Jordan	Thailand
Canada	Kenya	Trinidad & Tobago
Central African Republic	Republic of Korea	Turkey
Chad	Kuwait	United Arab Emirates
Chile	Laos	United Kingdom (England)
Republic of China (Taiwan)	Lebanon	Uruguay
Colombia	Liberia	Venezuela
Costa Rica	Libya	Republic of Vietnam
Cyprus	Macao	Yugoslavia
Ecuador	Malaysia	Zaire
Egypt	Mauritius	
El Salvador	Mexico	
Germany, Federal Republic of	Morocco	
Ghana	Netherlands	
Guatemala	Niger	
Guyana	Nigeria	
Haiti	Pakistan	
Hong Kong	Panama	
Iceland	Philippines	
India	Rhodesia	
Indonesia	Saudi Arabia	

Source: Fall 1976 (Preliminary) Student Data Course File

THE FSU FACT BOOK
TABLE II-12
Rank Order of Undergraduate Majors at FSU
FALL 1976

<u>Rank</u>	<u>Major</u>	<u>Number</u>
1	Biology	1190
2	Accounting	1113
3	Criminology	886
4	Music	708
5	Business Administration	618
6	Psychology	563
7	Childhood Education	559
8	Nursing	527
9	Management	432
10	Physical Education	416
11	Government	403
12	Art	394
13	Mass Communication	379
14	Special Education	358
15	Clothing & Textiles	345
16	English	340
17	Social Work	312
18	Marketing	295
19	Mathematics	256
20	Hotel & Restaurant Administration	238
21	Theatre	233
22	Interior Design	223
23	Finance	218
24	Pre-Law	207
25	Chemistry	185
25	Foreign Languages	185
27	History	176
28	Food and Nutrition	148
29	Sociology	140

THE FSU FACT BOOK

Rank Order of Undergraduate Majors at FSU

<u>Rank</u>	<u>Major</u>	<u>Number</u>
30	Home Economics Education	139
31	Speech Communications	133
32	Art Education and Constructive Design	125
33	Leisure Services & Studies	124
34	Meteorology	119
35	Risk & Insurance	118
36	Audiology & Speech Pathology	110
37	Home & Family Life	95
38	Dance	94
39	Physics	87
39	International Affairs	87
41	Anthropology	85
42	Vocational and Industrial Arts	76
43	Economics	69
43	Geology	69
43	Science & Human Affairs	69
46	Humanities	67
47	Social Science	55
48	General Home Economics	44
49	Religion	41
50	Geography	37
51	Philosophy	31
52	Business Education & Office Management	27
53	Design & Mgt. of Post Secondary Education	22
54	Library Science, Interdivisional	21
55	Classics	20
56	Asian Studies	19
57	Library Science	16
58	Statistics	15
59	American Studies	15

THE FSU FACT BOOK

Rank Order of Undergraduate Majors at FSU

<u>Rank</u>	<u>Major</u>	<u>Number</u>
60	Multinational Business	12
	Others*	39
	Special Students	1352
	Undecided	1924
		<u>17403</u>

*Includes Nine Major Areas With Eight or Less Declared Majors

Source: Fall 1976 (Preliminary) Student Data Course File

THE FSU FACT BOOK
TABLE II-13
Rank Order of Graduate Majors at FSU
FALL 1976

Rank		Number of Majors
1	Law	500
2	Social Work	263
3	Music	193
4	Library Science	189
5	Counseling Health & Rehabilitation	159
6	Design and Management of Post Sec. Ed.	135
7	Biological Sciences	126
8	Theatre	115
9	Criminology	112
10	Psychology	103
11	Chemistry	90
12	Urban & Regional Planning	87
13	Design & Management of Elem. & Sec. Ed.	83
14	Business Administration	78
15	Audiology & Speech Pathology	77
16	Language Education	71
17	English	66
18	Childhood Education	64
19	Government	63
20	History	61
21	Instructional Design & Development	56
22	Art	56
23	Humanities	55
24	Home & Family Life	54
24	Special Education	54
26	Industrial Arts Education	52
27	Physics	51
27	Meteorology	51

THE FSU FACT BOOK

Rank Order of Graduate Majors at FSU

Rank		Number of Majors
31	Developmental Studies in Education	46
31	Public Administration	46
33	Economics	45
34	Oceanography	44
35	Educational Evaluation & Research Design	43
36	Physical Ed., Transportation & Safety Ed.	42
37	Science & Human Affairs	39
38	Movement Science	38
39	Sociology	36
40	Geology	35
41	Mass Communications	34
42	International Affairs	32
43	Home Economics Education	31
44	Leisure Service & Studies	29
45	Mathematics Education	28
45	Accounting	28
47	Anthropology	27
47	Geography	27
47	Philosophy	27
47	Speech Communication	27
51	Art Education & Construction Design	22
51	Mathematics	22
53	Interior Design	21
54	Molecular Biophysics	20
55	Marriage & Family Living	18
56	Religion	17
56	Food & Nutrition	17
58	Classical Language & Literature	16
59	Business Management	13
60	Dance	12
61	Finance	11
62	Asian Studies	9

THE FSU FACT BOOK

Rank Order of Graduate Majors at FSU

Rank		Number of Majors
29	Statistics	48
29	Modern Languages	48
	Others*	39
	Total	4101

*Includes Ten Major Areas With Eight or Less Declared Majors

Source: Fall 1976 (Preliminary) Student Data Course File

THE FSU FACT BOOK

TABLE II-14

PERCENTAGE DISTRIBUTION OF FSU CREDIT HOURS BY LEVEL

1975-76

<u>DISCIPLINE</u>	<u>LOWER LEVEL</u>	<u>UPPER LEVEL</u>	<u>GRADUATE</u>	<u>THESIS</u>	<u>DISSERTATION</u>	<u>TOTAL</u>
Agriculture	0.00	0.00	0.00	0.00	0.00	0.00
Architecture & Env. Des.	.08	1.66	3.03	0.00	1.19	1.49
Area Studies	0.00	.03	.30	4.97	0.00	.10
Biological Science	3.88	2.42	1.96	9.01	4.92	2.80
Business	4.11	21.56	5.21	.07	3.09	12.73
Communications	.39	2.89	.60	1.17	.92	1.65
Computer Science	0.00	0.00	0.00	0.00	0.00	0.00
Education	1.49	16.35	26.39	8.94	29.68	14.44
Engineering	0.00	0.00	0.00	0.00	0.00	0.00
Fine Arts	10.47	9.68	8.50	19.20	5.77	9.63
Foreign Languages	10.44	.78	1.29	2.26	2.07	3.66
Health Professions	0.00	3.44	2.14	0.00	.63	2.13
Home Economics	2.47	4.75	2.31	10.93	2.49	3.57
Law	0.00	0.00	12.95	0.00	0.00	2.79
Letters	16.32	5.83	3.73	7.03	7.78	8.40
Library Science	.07	.52	4.44	0.00	1.82	1.26
Mathematics	11.45	2.57	2.72	0.00	3.53	5.13
Physical Science	12.73	3.04	5.40	15.30	15.88	6.53
Psychology	4.13	5.67	2.82	10.68	7.00	4.65
Public Affairs	.10	8.13	7.95	2.03	3.10	5.71
Social Science	21.80	10.68	8.26	8.41	10.13	13.31
Theology	0.00	0.00	0.00	0.00	0.00	0.00
Interdisc. Studies	.07	0.00	0.00	0.00	0.00	.02
TOTAL	100.00	100.00	100.00	100.00	100.00	100.00

THE FSU FACT BOOK

TABLE II- 15

FSU STUDENT CREDIT HOURS AS A PERCENTAGE OF THE
TOTAL STATE UNIVERSITY SYSTEM CREDIT HOURS AT EACH LEVEL OF EACH DISCIPLINE,
1975-76

<u>DISCIPLINE</u>	<u>LOWER LEVEL</u>	<u>UPPER LEVEL</u>	<u>GRADUATE</u>	<u>THESIS</u>	<u>DISSERTATION</u>	<u>TOTAL</u>
Agriculture	--	--	--	--	--	--
Architecture & Env. Des.	2.23	20.88	43.87	--	100.00	23.33
Area Studies	--	3.88	87.57	69.03	--	15.12
Biological Science	12.34	12.45	20.00	16.77	28.91	13.39
Business	13.62	17.73	12.07	.62	39.04	16.60
Communications	7.99	16.11	16.48	5.38	100.00	15.12
Computer Science	--	--	--	--	--	--
Education	7.95	15.41	16.46	27.22	45.59	15.68
Engineering	--	--	--	--	--	--
Fine Arts	40.64	30.04	68.22	81.08	100.00	37.45
Foreign Languages	36.96	13.01	40.19	38.44	70.27	31.33
Health Professions	--	27.14	37.65	--	100.00	28.02
Home Economics	79.34	77.34	62.66	94.55	100.00	75.57
Law	--	--	28.40	--	--	28.40
Letters	21.18	13.96	27.97	21.71	57.23	18.55
Library Science	28.23	68.57	89.49	--	100.00	81.92
Mathematics	29.54	7.83	29.22	--	53.58	17.73
Physical Science	20.92	15.23	53.51	18.59	44.55	21.83
Psychology	32.72	18.55	16.58	25.00	50.73	20.83
Public Affairs	23.64	37.18	63.26	100.00	100.00	42.57
Social Science	28.51	14.69	26.29	13.60	47.24	20.75
Theology	--	--	--	--	--	--
Interdisc. Studies	1.21	--	--	--	--	.55
TOTAL	23.43	16.77	24.43	21.64	44.43	19.91

Source: Board of Regents, State University System of Florida

FSU STUDENT CREDIT HOURS AS A PERCENT OF THE TOTAL STATE UNIVERSITY SYSTEM CREDIT HOURS
1975-76

TABLE II - 16

<u>DISCIPLINE</u>	<u>LOWER LEVEL</u>	<u>UPPER LEVEL</u>	<u>GRADUATE</u>	<u>THESIS</u>	<u>DISSERTATION</u>	<u>TOTAL</u>
Agriculture	-	-	-	-	-	-
Architecture & Env. Des.	*	.16	.13	-	*	.30
Area Studies	-	*	.01	*	-	.02
Biological Science	.22	.23	.08	.01	.01	.56
Business	.23	2.07	.22	*	.01	2.53
Communications	.02	.28	.03	*	*	.33
Computer Science	-	-	-	-	-	-
Education	.08	1.57	1.13	.01	.08	2.88
Engineering	-	-	-	-	-	-
Fine Arts	.59	.93	.37	.01	.02	1.92
Foreign Languages	.59	.08	.06	*	.01	.73
Health Professions	-	.33	.09	-	*	.42
Home Economics	.14	.46	.10	.01	.01	.71
Law	-	-	.56	-	-	.56
Letters	.93	.56	.16	.01	.02	1.67
Library Science	*	.05	.19	-	*	.25
Mathematics	.65	.25	.12	-	.01	1.02
Physical Science	.72	.29	.23	.01	.04	1.30
Psychology	.23	.54	.12	.01	.02	.93
Public Affairs	.01	.78	.34	*	.01	1.14
Social Science	1.24	1.02	.35	.01	.03	2.65
Theology	-	-	-	-	-	-
Interdisc. Studies	*	-	-	-	-	*
Totals	5.67	9.60	4.30	.08	.27	19.91

* Less than .005 percent

Source: Board of Regents, State University System of Florida

SECTION III

Data in this section are descriptive of FSU faculty members.

TABLE III-1. Average Nine and Twelve Month Salaries by College and Rank. This table summarizes budgeted salaries of nine and twelve month faculty by school or college for the last nine years. This chart does not include all faculty at FSU, only those in academic schools and colleges. For an FTE summary of faculty positions, see Table III-2.

TABLE III-2. Comparison of Budgeted Positions by Pay Plan for the Educational and General (State) Budget. This table compares the FTEs budgeted in the administrative, instructional, and student service areas of the state funded budget for the last four years. Included in this summary are faculty positions only.

TABLE III-3. Comparison of Budgeted Positions by Pay Plan for the Educational and General (State) Budget, and for the Auxiliary Enterprises Budget: Career Service and Administrative and Professional Pay Plans. This table compares the FTEs budgeted in the administrative, instructional, and student service areas of the state funded budget for the last four years for the two non-faculty pay plans for regular employees. Also included in this summary is a comparison of these positions for the Auxiliary enterprises budget.

TABLE III-4. Staffing Pattern of the Academic Schools by Faculty Rank for Nine and Twelve Month Positions. This table summarizes and compares the distribution of faculty positions by rank among the schools and colleges of the university. Also included are faculty positions in student and administrative support areas.

TABLE III-5. Tenured Faculty by Department, 1976-77. This table summarizes the number of tenured faculty by rank as of January 1, 1977. This includes all changes in the number of tenured faculty through the Fall Quarter 1976. Tenure is granted at the beginning of the Fall Quarter each year and the number changes very little through the course of the academic year.

TABLE III-6. Comparison of Tenured Faculty With Budgeted Lines, 1976-77. This table compares tenured faculty in each division with the budgeted lines in that division for the academic year 1976-77.

TABLE III-7. Nine Month Salary Graph. This graph shows the distribution of nine month faculty salaries by rank and frequency.

MAP III-8. Location of Institutions Conferring the Highest Degree to FSU Faculty. This map shows the distribution of FSU ranked faculty by location of the institution conferring highest degree.

TABLE III-9. Institutions Providing Five or More FSU Faculty Members With Their Highest Degree. This table lists in descending order the schools from which FSU faculty received their highest degree. Only those schools which provided five or more faculty with their highest degrees are included.

THE FSU FACT BOOK

Table III-1
Average Nine and Twelve Month Salaries by College and Rank

	1970-71	1971-72	1972-73	1973-74	1974-75	1975-76	1976-77
<u>NINE-MONTH PROFESSORS</u>							
Arts and Sciences	\$21,581	\$21,868	\$22,580	\$23,715	\$24,438	\$24,056	\$24,900
Business	20,093	20,756	22,144	23,517	24,702	24,515	24,836
Communication*	--	--	--	21,136	21,474	21,592	23,095
Criminology*	--	--	--	22,300	22,867	23,177	22,953
Dance*	--	--	--	18,000	19,000	19,000	23,755
Education	17,894	18,614	19,357	20,501	21,020	20,829	21,702
Home Economics	17,243	17,869	18,708	19,717	20,809	21,027	22,240
Law	20,000	19,825	21,544	23,712	24,158	24,158	27,720
Library Science	17,189	16,844	18,137	19,123	19,612	19,899	21,188
Music	17,423	17,412	18,267	18,595	19,478	18,754	19,695
Nursing	20,150	18,650	18,650	14,500	12,878	--	--
Social Sciences*	--	--	--	22,172	23,118	22,840	23,546
Social Work*	--	--	--	17,775	18,155	18,155	22,958
Theatre*	--	--	--	20,633	20,569	17,245	19,130
Visual Arts*	--	--	--	18,492	20,472	20,472	21,619
University Mean	--	--	--	\$22,091	\$22,771	\$22,608	\$23,641

*All of these areas were newly-formed reporting entities (these were previously departments within schools reported here) in 1973-74 and have no relevant historical data on faculty salaries.

(This footnote applies to each page of Table III-1.)

THE FSU FACT BOOK

Average Nine and Twelve Month Salaries by College and Rank

1970-71 1971-72 1972-73 1973-74 1974-75 1975-76 1976-77

TWELVE-MONTH PROFESSORS

Arts and Sciences	\$24,500	\$25,000	\$27,600	\$29,500	\$30,300	\$30,812	\$32,518
Business	--	--	--	--	32,504	32,504	33,557
Communication*	--	--	--	--	--	--	--
Criminology*	--	--	--	--	--	--	--
Dance*	--	--	--	--	--	--	--
Education	19,150	19,150	20,250	25,000	25,904	29,396	30,499
Home Economics	--	--	--	--	--	--	--
Law	--	--	--	--	--	25,700	28,700
Library Science	21,283	19,871	--	--	--	--	--
Music	19,200	20,867	21,633	--	23,850	23,850	25,047
Nursing	--	--	--	--	--	--	--
Social Sciences*	--	--	--	--	--	--	--
Social Work*	--	--	--	27,128	28,108	28,231	--
Theatre*	--	--	--	--	--	--	--
Visual Arts*	--	--	--	--	--	--	--
University Mean	22,099	22,712	24,523	27,108	27,857	27,762	29,206

THE FSU FACT BOOK

Average Nine and Twelve Month Salaries by College and Rank

1970-71 1971-72 1972-73 1973-74 1974-75 1975-76 1976-77

NINE-MONTH ASSOCIATE PROFESSORS

Arts and Sciences	\$14,989	\$15,062	\$15,386	\$15,938	\$16,299	\$15,922	\$16,647
Business	16,250	16,538	17,452	18,520	19,648	19,368	20,082
Communication*	--	--	--	15,350	16,793	16,679	17,295
Criminology*	--	--	--	18,738	19,399	18,633	19,327
Dance*	--	--	--	--	--	--	12,453
Education	14,044	14,428	15,098	15,794	16,402	16,103	16,835
Home Economics	14,750	14,586	15,145	15,614	16,411	16,093	16,931
Law	17,422	17,875	18,543	21,317	21,746	22,240	23,568
Library Science	15,178	14,720	16,016	16,844	17,175	17,199	18,792
Music	13,525	13,959	14,495	15,129	15,782	15,331	16,006
Nursing	15,000	13,251	13,382	13,877	14,743	14,406	17,850
Social Sciences*	--	--	--	16,732	17,433	17,225	18,360
Social Work*	--	--	--	--	27,000	13,867	18,747
Theatre*	--	--	--	14,722	15,925	15,858	16,273
Visual Arts*	--	--	--	14,470	16,084	15,075	15,943
University Mean	14,939	15,073	15,567	16,229	16,852	16,531	17,363

THE FSU FACT BOOK

Average Nine and Twelve Month Salaries by College and Rank

1970-71 1971-72 1972-73 1973-74 1974-75 1975-76 1976-77

TWELVE-MONTH ASSOCIATE PROFESSORS

Arts and Sciences	\$17,370	\$17,833	\$18,233	\$15,200	\$15,978	\$17,453	\$ --
Business	--	--	--	--	--	--	--
Communication*	--	--	--	--	--	--	--
Criminology*	--	--	--	--	--	--	--
Dance*	--	--	--	--	--	--	--
Education	17,870	17,013	18,000	19,500	20,217	21,698	20,766
Home Economics	--	--	--	--	--	--	--
Law	--	16,500	20,000	23,200	24,400	--	--
Library Science	--	--	--	--	--	--	--
Music	--	--	--	--	18,400	18,400	21,800
Nursing	--	--	18,000	--	19,314	19,314	25,214
Social Sciences*	--	--	--	--	--	--	--
Social Work*	--	--	--	20,451	21,262	21,354	--
Theatre*	--	--	--	--	--	--	--
Visual Arts*	--	--	--	--	--	--	--
University Mean	17,780	18,352	19,705	20,611	21,253	21,264	22,973

THE FSU FACT BOOK

Average Nine and Twelve Month Salaries by College and Rank

1970-71 1971-72 1972-73 1973-74 1974-75 1975-76 1976-77

NINE-MONTH ASSISTANT PROFESSORS

Arts and Sciences	\$11,589	\$11,713	\$12,038	\$12,639	\$13,245	\$13,315	\$13,659
Business	13,783	14,359	14,673	15,354	16,037	15,848	17,645
Communication*	--	--	--	13,793	13,872	14,814	14,388
Criminology*	--	--	--	15,190	15,578	15,175	15,695
Dance*	--	--	--	10,950	11,925	11,925	13,570
Education	11,890	12,067	12,702	13,561	14,094	14,224	15,211
Home Economics	11,143	11,457	12,408	13,017	13,427	13,112	14,586
Law	13,500	13,880	14,775	14,629	16,250	16,250	18,850
Library Science	11,341	11,961	13,087	14,932	15,712	15,500	17,093
Music	10,957	11,286	11,664	12,081	12,233	11,921	12,808
Nursing	11,375	12,263	12,221	12,635	13,613	13,415	15,667
Social Sciences*	--	--	--	13,541	14,077	13,531	14,245
Social Work*	--	--	--	12,323	13,039	14,006	15,634
Theatre*	--	--	--	11,533	12,473	11,890	13,505
Visual Arts*	--	--	--	11,560	11,929	11,820	12,560
University Mean	11,849	12,064	12,493	13,193	13,806	13,766	14,630

THE FSU FACT BOOK
Average Nine and Twelve Month Salaries by College and Rank

1970-71 1971-72 1972-73 1973-74 1974-75 1975-76 1976-77

TWELVE-MONTH ASSISTANT PROFESSORS

Arts and Sciences	\$11,390	\$11,950	\$10,500	\$11,400	\$12,370	\$16,983	\$25,500
Business	--	--	--	--	--	--	--
Communication*	--	--	--	--	12,900	12,900	15,205
Criminology*	--	--	--	--	--	--	--
Dance*	--	--	--	--	--	--	--
Education	13,042	13,189	13,212	13,881	15,967	16,203	18,221
Home Economics	--	10,000	10,600	--	13,100	--	--
Law	15,000	--	--	--	--	18,000	--
Library Science	--	--	--	--	--	--	--
Music	--	--	--	--	--	17,050	19,825
Nursing	--	--	--	--	--	--	--
Social Science*	--	--	--	--	--	--	--
Social Work*	--	--	--	17,553	17,704	17,528	--
Theatre*	--	--	--	--	--	--	--
Visual Arts*	--	--	--	--	--	--	--
University Mean	14,970	15,351	15,993	16,693	17,359	16,967	19,131

THE FSU FACT BOOK

Average Nine and Twelve Month Salaries by College and Rank

1970-71 1971-72 1972-73 1973-74 1974-75 1975-76 1976-77

NINE-MONTH INSTRUCTORS

Arts and Sciences	\$ 7,206	\$ 7,246	\$ 7,165	\$ 6,965	\$ 7,016	\$ 8,816	\$10,536
Business	8,249	8,083	8,198	8,463	11,595	11,933	14,584
Communication*	--	--	--	9,100	10,025	10,025	--
Criminology*	--	--	--	9,861	--	--	13,500
Dance*	--	--	--	--	--	--	--
Education	10,150	9,601	10,037	10,210	11,661	16,908	--
Home Economics	8,400	8,800	9,300	10,100	10,225	10,225	11,173
Law	--	--	10,000	16,700	17,100	--	--
Library Science	--	--	--	--	--	--	--
Music	8,945	8,747	9,067	10,052	10,267	10,327	11,869
Nursing	9,879	10,405	10,869	11,523	12,599	13,064	13,823
Social Sciences*	--	--	--	7,250	--	--	--
Social Work*	--	--	--	8,000	11,460	11,460	9,764
Theatre*	--	--	--	14,000	--	--	--
Visual Arts*	--	--	--	7,800	8,200	7,850	10,189
University Mean	8,247	8,240	8,484	8,748	9,606	11,410	12,554

THE FSU FACT BOOK

Average Nine and Twelve Month Salaries by College and Rank

1970-71 1971-72 1972-73 1973-74 1974-75 1975-76 1976-77

TWELVE-MONTH INSTRUCTORS

Arts and Sciences	\$15,700	\$12,550	\$13,050	\$11,000	\$11,710	\$ --	\$ --
Business	--	--	--	--	12,000	12,000	18,074
Communication *	--	--	--	11,585	12,160	12,160	14,368
Criminology *	--	--	--	--	--	--	--
Dance *	--	--	--	--	--	--	--
Education	--	8,200	10,277	8,807	9,625	12,708	14,381
Home Economics	9,600	--	--	--	--	--	--
Law	9,500	10,500	--	--	--	--	--
Library Science	9,991	10,990	11,320	--	--	--	--
Music	10,000	10,300	10,800	--	11,500	--	--
Nursing	--	--	--	--	--	--	--
Social Sciences *	--	--	--	--	--	--	--
Social Work *	--	--	--	14,000	11,000	11,000	--
Theatre *	--	--	--	--	--	--	--
Visual Arts *	--	--	--	--	--	--	--
University Mean	11,184	12,273	11,914	13,053	13,272	13,091	15,846

THE FSU FACT BOOK

Average Nine and Twelve Month Salaries by College and Rank

	1970-71	1971-72	1972-73	1973-74	1974-75	1975-76	1976-77
--	---------	---------	---------	---------	---------	---------	---------

NINE-MONTH ALL RANKS

Arts and Sciences	\$14,708	\$15,101	\$15,862	\$16,838	\$17,703	\$18,488	\$19,439
Business	14,543	15,187	15,959	16,748	18,709	19,178	20,392
Communication*	--	--	--	16,498	17,460	17,467	18,221
Criminology*	--	--	--	16,833	17,900	18,125	18,734
Dance*	--	--	--	12,360	13,340	13,340	15,384
Education	14,283	14,757	15,530	16,564	17,385	17,785	18,740
Home Economics	13,964	14,233	14,749	15,593	16,336	16,369	17,652
Law	16,112	16,929	17,616	19,414	21,167	21,585	25,096
Library Science	14,737	14,489	15,727	16,975	18,075	18,182	19,727
Music	13,077	13,633	14,264	14,919	15,971	15,799	16,758
Nursing	11,684	11,381	11,987	12,389	13,430	13,359	14,959
Social Sciences*	--	--	--	16,702	18,479	18,634	19,810
Social Work*	--	--	--	13,420	16,808	14,808	18,778
Theatre*	--	--	--	14,000	15,932	15,873	16,241
Visual Arts*	--	--	--	14,497	15,683	15,563	16,520
University Mean	14,518	14,883	15,597	16,335	17,438	17,506	19,037

Source: Faculty 12-Month Salary

THE FSU FACT BOOK
Average Nine and Twelve Month Salaries by College and Rank

1970-71 1971-72 1972-73 1973-74 1974-75 1975-76 1976-77

TWELVE-MONTH ALL RANKS

Arts and Sciences	\$16,441	\$17,056	\$18,312	\$16,460	\$17,267	\$19,266	\$24,803
Business	--	--	--	--	22,252	22,252	33,557
Communication*	--	--	--	11,585	12,530	12,530	14,658
Criminology *	--	--	--	--	--	--	--
Dance *	--	--	--	--	--	--	--
Education	14,850	14,140	13,831	15,784	17,048	19,306	20,210
Home Economics	9,600	10,000	10,600	--	13,100	--	--
Law	12,250	13,500	20,000	23,200	24,400	21,850	28,700
Library Science	14,749	16,911	11,320	--	--	--	--
Music	17,360	18,225	18,925	--	19,400	--	--
Nursing	--	--	18,000	--	19,314	19,314	25,214
Social Sciences *	--	--	--	--	--	--	--
Social Work *	--	--	--	20,486	21,223	21,419	--
Theatre *	--	--	--	--	--	--	--
Visual Arts *	--	--	--	--	--	--	--
University Mean	16,848	17,044	18,107	18,971	19,846	19,961	21,530

Source: Faculty Salaries Report

THE FSU FACT BOOK
Table III-2
COMPARISON OF BUDGETED POSITIONS, BY PAY PLAN
FOR THE EDUCATION AND GENERAL (STATE)
BUDGET

	FACULTY			
	<u>1973-74</u>	<u>1974-75</u>	<u>1975-76</u>	<u>1976-77</u>
Central Administration	--	--	--	1.00
Academic Administration	13.25	15.51	3.00	3.00
Administrative Affairs				
Administration & General	--	1.00	--	--
Plant Operations & Maintenance	--	--	--	--
University Relations				
Administration & General	--	--	--	--
Plant Operations & Maintenance	--	--	--	--
Division I	418.50	409.50	388.50	379.75*
Division II**	396.75	386.75	376.25	376.25
Division III	179.60	172.00	170.00	165.00
Division IV	147.75	149.75	151.75	152.63
Division V	12.00	12.00	11.00	7.00
Educational Services				
Administration & General	--	--	--	--
Instruction	43.50	41.50	28.30	24.50
Research	11.00	10.00	11.00	13.00
Library	--	--	--	--
Activities Related to Instruction	--	--	--	--
TOTALS	1222.35	1198.01	1139.80	1122.13

*

** Includes 2.00 FTE in PIMS added after the operating budget was published
Division II totals include FTE for the Developmental Research School

-124-

THE FSU FACT BOOK

Table III-3

COMPARISON OF BUDGETED POSITIONS, BY PAY PLAN FOR THE
EDUCATION AND GENERAL (STATE) BUDGET, AND FOR THE
AUXILIARY ENTERPRISES BUDGET

	Career Service and A&P			
	1973-74	1974-75	1975-76	1976-77
Central Administration	77.00	29.00	42.10	37.50
Academic Administration	15.11	8.10	14.00	6.00
Administrative Affairs				
Administration & General	172.50	223.00	205.00	218.00
Plant Operations & Maintenance	353.50	357.50	354.50	352.50
NWRDC & UNIFTRAN	14.00	14.00	35.00	17.00
University Relations				
Administration & General	29.50	35.00	34.50	32.50
Plant Operations & Maintenance	63.00	67.00	65.00	64.00
Division I	173.00	170.00	173.00	180.25
Division II	107.90	104.90	103.90	102.90
Division III	52.50	50.50	52.50	55.50
Division IV	31.50	31.00	33.25	35.25
Division V	29.50	36.50	31.50	34.50
Educational Services				
Administration & General	68.50	67.50	68.50	72.50
Instruction	24.50	23.50	21.50	20.50
Research	8.00	8.00	9.00	9.00
Library	136.00	136.00	136.00	136.00
Activities Related to Instruction	48.00	48.00	48.00	48.00
Total	1404.01	1409.50	1427.25	1421.90
Auxiliary Enterprises and Working Capital	747.96	758.96	758.96	704.55

Source: Comparisons of Initial Allocations, Budget & Analysis Department,
Auxiliary Enterprises Budget

THE FSU FACT BOOK

Table III-4

Staffing Pattern of the Academic Schools by Faculty Rank
for Nine and Twelve-Month Positions

	<u>1975-76</u>	<u>1976-77</u>
<u>DIVISION I</u>		
Provost		
12-month	1.00	1.00
Assistant Professor		
12-month	1.00	1.00
<u>ARTS AND SCIENCES</u>		
Dean		
12-month	--	--
Professor		
9-month	149.00	156.50
12-month	2.00	1.00
Associate Professor		
9-month	129.00	136.00
12-month	2.00	--
Assistant Professor		
9-month	94.50	76.00
12-month	5.00	--
Instructor		
9-month	5.00	7.00
12-month	--	1.25

THE FSU FACT BOOK

Staffing Pattern of the Academic Schools by Faculty Rank

	<u>1975-76</u>	<u>1976-77</u>
<u>DIVISION I (continued)</u>		
All Ranks		
9-month	377.50	375.50
12-month	<u>9.00</u>	<u>2.25</u>
TOTALS	386.50	377.75
<u>DIVISION II</u>		
Provost		
12-month	1.00	1.00
Professor		
9-month	1.00	--
Associate Professor		
9-month	--	--
Assistant Professor		
9-month	1.00	1.00
<u>BUSINESS</u>		
Dean		
12-month	1.00	1.00
Professor		
9-month	24.00	27.00
12-month	1.00	1.00
Associate Professor		
9-month	24.00	20.00
12-month	--	--

THE FSU FACT BOOK

Staffing Pattern of the Academic Schools by Faculty Rank

	<u>1975-76</u>	<u>1976-77</u>
<u>DIVISION II (continued)</u>		
Assistant Professor		
9-month	32.00	31.00
12-month	--	--
Instructor		
9-month	5.00	8.00
12-month	1.00	--
All Ranks		
9-month	85.00	86.00
12-month	<u>3.00</u>	<u>2.00</u>
TOTALS	<u>88.00</u>	<u>88.00</u>
<u>EDUCATION</u>		
Dean		
12-month	1.00	1.00
Professor		
9-month	59.00	62.00
12-month	3.00	3.00
Associate Professor		
9-month	49.00	51.00
12-month	3.00	2.00
Assistant Professor		
9-month	31.00	27.00
12-month	6.75	6.75
Instructor		
9-month	1.00	--
12-month	2.50	3.50

THE FSU FACT BOOK

Staffing Pattern of the Academic Schools by Faculty Rank

	<u>1975-76</u>	<u>1976-77</u>
<u>DIVISION II (continued)</u>		
All Ranks		
9-month	140.00	140.00
12-month	<u>16.25</u>	<u>16.25</u>
TOTALS	156.25	156.25
<u>HOME ECONOMICS</u>		
Dean		
12-month	1.00	1.00
Professor		
9-month	11.00	11.00
12-month	--	--
Associate Professor		
9-month	10.00	11.00
12-month	--	--
Assistant Professor		
9-month	13.00	12.00
12-month	--	--
Instructor		
9-month	1.00	1.00
12-month	--	--
All Ranks		
9-month	35.00	35.00
12-month	<u>1.00</u>	<u>1.00</u>
TOTALS	36.00	36.00

THE FSU FACT BOOK

Staffing Pattern of the Academic Schools by Faculty Rank

1975-76

1976-77

DIVISION II (continued)

LIBRARY SCIENCE

Dean

12-month

1.00

1.00

Professor

9-month

5.00

5.00

12-month

--

--

Associate Professor

9-month

6.00

6.00

12-month

--

--

Assistant Professor

9-month

1.00

1.00

12-month

--

--

Instructor

9-month

--

--

12-month

--

--

All Ranks

9-month

12.00

12.00

12-month

1.00

1.00

TOTALS

13.00

13.00

NURSING

Dean

12-month

1.00

1.00

THE FSU FACT BOOK

Staffing Pattern of the Academic Schools by Faculty Rank
1975-76 1976-77

DIVISION II (continued)

Professor		
9-month	--	1.00
12-month	--	--
Associate Professor		
9-month	3.00	3.00
12-month	1.00	1.00
Assistant Professor		
9-month	7.00	7.00
12-month	--	--
Instructor		
9-month	12.00	12.00
12-month	--	--
All Ranks		
9-month	22.00	23.00
12-month	<u>2.00</u>	<u>2.00</u>
TOTALS	24.00	25.00

DIVISION III

Provost		
12-month	1.00	1.00
Professor		
9-month	2.00	2.00
Associate Professor		
9-month	--	1.00

THE FSU FACT BOOK
Staffing Pattern of the Academic Schools by Faculty Rank

	<u>1975-76</u>	<u>1976-77</u>
<u>DIVISION III (continued)</u>		
Assistant Professor		
9-month	1.00	1.00
<u>LAW</u>		
Dean		
12-month	1.00	1.00
Professor		
9-month	6.00	10.00
12-month	1.00	1.00
Associate Professor		
9-month	9.00	9.00
12-month	--	--
Assistant Professor		
9-month	4.00	2.00
12-month	1.00	--
Instructor		
9-month	--	--
12-month	1.00	--
All Ranks		
9-month	19.00	21.00
12-month	4.00	2.00
TOTALS	23.00	23.00

THE FSU FACT BOOK

Staffing Pattern of the Academic Schools by Faculty Rank
1975-76 1976-77

DIVISION III (continued)

SOCIAL SCIENCES

Dean		
12-month	1.00	1.00
Professor		
9-month	31.00	31.00
12-month	--	--
Associate Professor		
9-month	31.00	31.00
12-month	--	--
Assistant Professor		
9-month	18.00	18.00
12-month	--	--
Instructor		
9-month	--	--
12-month	--	--
All Ranks		
9-month	80.00	80.00
12-month	1.00	1.00
TOTALS	81.00	81.00

THE FSU FACT BOOK

Staffing Pattern of the Academic Schools by Faculty Rank

1975-76

1976-77

DIVISION III (continued)

SOCIAL WORK

Dean

12-month

1.00

1.00

Professor

9-month

2.00

6.00

12-month

5.00

--

Associate Professor

9-month

1.00

12.00

12-month

12.00

--

Assistant Professor

9-month

3.00

5.00

12-month

5.00

--

Instructor

9-month

1.00

1.00

12-month

1.00

--

All Ranks

9-month

7.00

24.00

12-month

24.00

1.00

TOTALS

31.00

25.00

CRIMINOLOGY

Dean

12-month

1.00

1.00

Professor

9-month

4.00

4.00

12-month

--

--

THE FSU FACT BOOK

Staffing Pattern of the Academic Schools by Faculty Rank

1975-76

1976-77

DIVISION III (continued)

Associate Professor		
9-month	5.00	6.00
12-month	--	--
Assistant Professor		
9-month	7.00	5.00
12-month	--	--
Instructor		
9-month	--	1.00
12-month	--	--
All Ranks		
9-month	16.00	16.00
12-month	<u>1.00</u>	<u>1.00</u>
TOTALS	<u>17.00</u>	<u>17.00</u>

BLACK STUDIES

Professor		
9-month	--	1.00

INSTITUTE FOR SOCIAL RESEARCH

Professor		
9-month	5.00	5.00
12-month	1.00	1.00
Associate Professor		
9-month	3.00	4.00
12-month	--	--
Assistant Professor		
9-month	4.00	3.00
12-month	--	--

THE FSU FACT BOOK

Staffing Pattern of the Academic Schools by Faculty Rank

1975-76

1976-77

DIVISION III (continued)

Instructor		
9-month	1.00	--
12-month	--	--
All Ranks		
9-month	13.00	12.00
12-month	1.00	1.00
TOTALS	<u>14.00</u>	<u>13.00</u>

DIVISION IV

Provost		
12-month	1.00	1.00
Associate Professor		
9-month	1.00	--

COMMUNICATION

Dean		
9-month	1.00	--
12-month	--	1.00
Professor		
9-month	10.00	8.00
12-month	--	--
Associate Professor		
9-month	7.00	9.00
12-month	--	--

THE FSU FACT BOOK

Staffing Pattern of the Academic Schools by Faculty Rank
1975-76 1976-77

DIVISION IV (continued)

Assistant Professor		
9-month	7.00	8.00
12-month	1.00	1.00
Instructor		
9-month	1.00	--
12-month	1.00	1.00
All Ranks		
9-month	26.00	25.00
12-month	<u>2.00</u>	<u>3.88</u>
TOTALS	28.00	28.88

VISUAL ARTS

Dean		
9-month	--	--
Professor		
9-month	11.00	13.00
12-month	--	--
Associate Professor		
9-month	11.00	12.00
12-month	--	--
Assistant Professor		
9-month	12.00	7.00
12-month	--	--

THE FSU FACT BOOK
Staffing Pattern of the Academic Schools by Faculty Rank
1975-76 1976-77

DIVISION IV (continued)

Instructor		
9-month	3.00	5.00
12-month	--	--
All Ranks		
9-month	37.00	37.00
12-month	--	--
TOTALS	<u>37.00</u>	<u>37.00</u>

MUSIC

Dean		
12-month	1.00	1.00
Professor		
9-month	26.00	25.00
12-month	2.00	3.00
Associate Professor		
9-month	16.00	18.00
12-month	1.00	1.00
Assistant Professor		
9-month	14.00	13.00
12-month	1.00	1.00
Instructor		
9-month	2.75	1.75
12-month	--	--
All Ranks		
9-month	58.75	57.75
12-month	<u>5.00</u>	<u>6.00</u>
TOTALS	<u>63.75</u>	<u>63.75</u>

THE FSU FACT BOOK

Staffing Pattern of the Academic Schools by Faculty Rank

1975-76

1976-77

DIVISION IV (continued)

THEATRE

Dean

9-month

1.00

--

12-month

--

1.00

Professor

9-month

3.00

4.00

12-month

--

--

Associate Professor

9-month

9.00

9.00

12-month

--

--

Assistant Professor

9-month

3.00

2.00

12-month

--

--

Instructor

9-month

--

1.00

12-month

--

--

All Ranks

9-month

16.00

16.00

12-month

--

1.00

TOTALS

16.00

17.00

DANCE

Professor

9-month

1.00

1.00

12-month

--

--

Associate Professor

9-month

--

1.00

12-month

--

--

THE FSU FACT BOOK
Staffing Pattern of the Academic Schools by Faculty Rank

1975-76

1976-77

DIVISION IV (continued)

Assistant Professor		
9-month	4.00	3.00
12-month	--	--
All Ranks		
9-month	5.00	5.00
12-month	--	--
TOTALS	<u>5.00</u>	<u>5.00</u>

DIVISION V

GRADUATE STUDIES AND RESEARCH

Provost		
12-month	1.00	1.00
Professor		
9-month	1.00	1.00

COMPUTING CENTER

Professor		
9-month	--	1.00
12-month	--	--
Associate Professor		
9-month	1.00	1.00
12-month	2.00	1.00
Assistant Professor		
9-month	1.00	--
12-month	--	--

THE FSU FACT BOOK
Staffing Pattern of the Academic Schools by Faculty Rank

1975-76

1976-77

DIVISION V (continued)

Instructor		
9-month	1.00	--
12-month	2.00	1.00
All Ranks		
9-month	3.00	2.00
12-month	4.00	2.00
TOTALS	7.00	4.00

UNIVERSITY PRESS

Assistant Professor		
12-month	1.00	1.00

FLORIDA RESOURCE & ENVIRONMENTAL

ANALYSIS CENTER

Associate Professor		
9-month	--	--
12-month	1.00	--

MARINE LABORATORY

Associate Professor		
12-month	--	--

STUDENT EDUCATIONAL SERVICES

Dean		
12-month	--	1.00
Professor		
9-month	--	--
12-month	2.00	1.00

THE FSU FACT BOOK

Staffing Pattern of the Academic Schools by Faculty Rank
1975-76 1976-77

STUDENT EDUCATIONAL SERVICES (continued)

Associate Professor		
9-month	--	--
12-month	1.00	1.00
Assistant Professor		
9-month	--	--
12-month	3.80	--
Instructor		
9-month	--	--
12-month	2.00	3.00
All Ranks		
9-month	--	--
12-month	<u>8.80</u>	<u>6.00</u>
TOTALS	8.80	6.00

CONTINUING EDUCATION

Professor		
9-month	2.00	--
12-month	2.00	1.00
Associate Professor		
9-month	3.00	3.00
12-month	1.00	1.00
Assistant Professor		
9-month	1.00	2.50
12-month	2.00	2.00

THE FSU FACT BOOK

Staffing Pattern of the Academic Schools by Faculty Rank

1975-76

1976-77

STUDENT EDUCATIONAL SERVICES (continued)

Instructor

9-month

5.50

6.00

12-month

1.00

2.00

All Ranks

9-month

11.50

11.50

12-month

6.00

6.00

TOTALS

17.50

17.50

D.I.R.S.*

Professor

9-month

3.00

4.00

12-month

--

1.00

Associate Professor

9-month

2.00

1.00

12-month

1.00

1.00

Assistant Professor

9-month

5.00

6.00

12-month

--

--

All Ranks

9-month

10.00

11.00

12-month

1.00

2.00

TOTALS

11.00

13.00

*For 1976-77, renamed as Instructional Systems Development Center

THE FSU FACT BOOK

Staffing Pattern of the Academic Schools by Faculty Rank
1975-76 1976-77

STUDENT EDUCATIONAL SERVICES (continued)

INTERNATIONAL PROGRAMS

Slavic & East European Studies Center

Professor		
9-month	1.00	1.00
12-month	--	--
All Ranks		
9-month	1.00	1.00
12-month	--	--
TOTALS	<u>1.00</u>	<u>1.00</u>

FLORENCE PROGRAM

Instructor		
12-month	1.00	--

ACADEMIC ADMINISTRATION

UNALLOCATED

Professor		
9-month	--	--
12-month	1.00	--
Assistant Professor		
9-month	--	--
12-month	--	1.00
Instructor		
9-month	--	--
12-month	--	--

THE FSU FACT BOOK

Staffing Pattern of the Academic Schools by Faculty Rank
1975-76 1976-77

ACADEMIC ADMINISTRATION (continued)

All Ranks		
9-month	--	--
12-month	<u>1.00</u>	<u>1.00</u>
TOTALS	1.00	1.00

DATA ADMINISTRATION AND ANALYSIS

Assistant Professor		
9-month	--	--
12-month	--	--
Instructor		
9-month	--	--
12-month	1.00	--
All Ranks		
9-month	--	--
12-month	<u>1.00</u>	<u>--</u>
TOTALS	1.00	--

DEAN OF FACULTIES

Dean		
12-month	1.00	1.00
Assistant Professor		
12-month	--	--
Instructor		
12-month	--	1.00

CENTRAL ADMINISTRATION

HUMAN AFFAIRS		
Instructor		
12-month	--	1.00

THE FSU FACT BOOK
Staffing Pattern of the Academic Schools by Faculty Rank

	<u>1975-76</u>	<u>1976-77</u>
<u>UNIVERSITY TOTALS</u>		
Provost		
12-month	5.00	5.00
Dean		
9-month	3.00	--
12-month	11.00	14.00
Professor		
9-month	356.00	379.50
12-month	20.00	13.00
Associate Professor		
9-month	320.00	344.00
12-month	25.00	8.00
Assistant Professor		
9-month	263.50	230.50
12-month	27.55	13.75
Instructor		
9-month	39.25	43.75
12-month	13.50	14.63
TOTALS		
Provost	5.00	5.00
Deans	14.00	14.00
9-month	978.75	997.75
12-month	86.05	49.38
All Faculty	<u>1083.80</u>	<u>1066.13</u>

Source: Faculty Salaries Report, Executive Vice-President's Office

THE FSU FACT BOOK
Table III-5
1976-77 Tenured Faculty by Department
As of January 1, 1977

	PROFESSOR		ASSOCIATE PROFESSOR		ASSISTANT PROFESSOR		TOTALS	
	Male	Female	Male	Female	Male	Female	Male	Female
DIVISION I - Provost								
Anthropology	1	0	4	0			5	0
Bio. Sci.	12	1	15	2			27	3
PIMS	2	0	0	0			2	0
Chemistry	21	1	4	0			25	1
Classics	1	1	5	0			6	1
English	10	0	12	4			22	4
Geology	3	0	1	0			4	0
History	15	1	14	0			29	1
Math	19	0	11	0			30	0
Modern Languages	5	1	12	3	1	0	18	4
Philosophy	4	0	1	0			5	0
Physics	14	0	9	1			23	1
Meteorology	8	0	2	0			10	0
Statistics	7	0	3	0			10	0
Psychology	14	0	11	0			25	0
Oceanography	4	1	4	0			8	1
Religion	5	0	4	0			9	0
GFDI	1	0	1	0			2	0
Provost	1	0	0	0			1	0
DIVISION I - TOTALS	147	6	113	10	1	0	261	16

THE FSU FACT BOOK

TENURED FACULTY

	PROFESSOR		ASSOCIATE PROFESSOR		ASSISTANT PROFESSOR		TOTALS	
	Male	Female	Male	Female	Male	Female	Male	Female
DIVISION II - PROVOST	1	0	0	0			1	0
Business Dean	1	0	0	0			1	0
Hotel & Rest. Admin.	0	0	1	0			1	0
Accounting	6	0	3	0			9	0
Risk & Ins.	0	0	2	0			2	0
Management	4	0	6	1			10	1
Marketing	8	1	1	0			9	1
Finance	3	0	3	0			6	0
Business Totals	22	1	16	1			38	2
Education Deans & Admin.	3	0	0	0	0	0	3	0
Instructional Design	20	0	10	4	2	1	32	5
Prof. & Clin. Svc.	12	2	6	4	3	1	21	7
Educ. Mgt. Sys.	22	2	12	1	1	0	35	3
Education Totals	57	4	28	9	6	2	91	15
Home Economics Dean	0	1	0	0	0	0	0	1
Clothing & Textiles	0	2	0	1	0	1	0	4
Food & Nutrition	0	2	0	0	0	1	0	3
Home & Family Life	0	3	1	2	0	1	1	6
Home Economics Educ.	0	0	0	1	0	0	0	1
Home Economics Totals	0	8	1	4	0	3	1	15
Library Science Dean	1	0	0	0			1	0
Library School	2	2	2	1			4	3
Library Science Totals	3	2	2	1			5	3

THE FSU FACT BOOK

TENURED FACULTY

	PROFESSOR		ASSOCIATE PROFESSOR		ASSISTANT PROFESSOR		TOTALS	
	Male	Female	Male	Female	Male	Female	Male	Female
Nursing	0	0	0	3			0	3
DIVISION II - TOTALS	83	15	47	18	6	5	136	38
DIVISION III - PROVOST	0	0	0	0			0	0
Criminology	4	0	4	0			8	0
Law	11	0	3	1			14	1
Social Science - Dean	1	0	0	0			1	0
Economics	6	0	9	1			15	1
Geography	4	0	2	0			6	0
Urban & Regional Plng	2	0	6	0			8	0
Government	6	0	6	0	1	1	13	1
Public Administration	2	0	2	0			4	0
Sociology	9	0	1	0			10	0
Social Science - Totals	30	0	26	1	1	1	57	2
Social Work	6	2	3	3			9	5
Black Studies	0	0	0	0			0	0
Inst. for Social Research	6	0	1	1			7	1
DIVISION III - TOTALS	57	2	37	6	1	1	95	9

THE FSU FACT BOOK

TENURED FACULTY

	PROFESSOR		ASSOCIATE PROFESSOR		ASSISTANT PROFESSOR		TOTALS	
	Male	Female	Male	Female	Male	Female	Male	Female
DIVISION IV - PROVOST	1	0					1	0
Communications								
Audiology & Sp. Path	2	0	2	0			4	0
Communications	7	0	3	0			10	0
Communications Totals	9	0	5	0			14	0
Dance	0	1	1	0			1	1
Music Dean	1	0	0	0			1	0
Music	20	5	8	4			28	9
Theatre	5	0	3	0			8	0
Visual Arts								
Int. Des.	0	1	0	0			0	1
Art	3	2	2	0			5	4
Art Ed. & Const. Des.	2	2	2	0			4	2
Visual Arts Totals	5	5	4	0			9	5
DIVISION IV - TOTALS	41	11	21	4			62	15
DIVISION V - PROVOST	2	0	0	0			2	0
Computing Center	1	0	0	0			1	0
FREAC	1	0	0	0			1	0
DIVISION V - TOTALS	4	0	0	0			4	0

THE FSU FACT BOOK

TENURED FACULTY

	PROFESSOR		ASSOCIATE PROFESSOR		ASSISTANT PROFESSOR		TOTALS	
	Male	Female	Male	Female	Male	Female	Male	Female
EDUCATION SERVICES -								
STUDENT AFFAIRS	0	0	1	0			1	0
Basic Studies	1	0	0	0			1	0
Continuing Education	1	0	0	0			1	0
East. Eur. Slavic	1	0	0	0			1	0
Eval Svcs.	0	0	1	0			1	0
Instr. Rsch	3	0	1	0			4	0
Ctr. Comp. Support	1	0	0	0			1	0
EDUCATION SERVICES - TOTALS	7	0	3	0			10	0
UNIV. REG. FAC.	339	34	221	38	8	6	568	78
DEAN OF FACULTY	0	1	0	0			0	1
DEV. RSCH SCHOOL							14	15
OTHER TENURED								
Non Faculty	2	3					2	3
	341	38	221	38	8	6	584	97

Source: Dean of Faculties Office

THE FSU FACT BOOK
Table III-6
Comparison of Tenure with Budgeted Lines
1976-77

	PROFESSOR	ASSOCIATE PROFESSOR	ASSISTANT PROFESSOR	INSTRUCTORS	ALL RANKS
DIVISION I - Total Tenured	153	123	1	0	277
Total FTE	158.50	136.00	77.00	8.25	379.75
Percent Tenured	97	90	1	0	73
DIVISION II- Total Tenured	98	65	11	0	174
Total FTE	115.00	95.00	85.75	24.50	320.25
Percent Tenured	85	68	13	0	54
DIVISION III Total Tenured	59	43	2	0	104
Total FTE	66.00	63.00	34.00	2.00	165.00
Percent Tenured	89	68	6	0	63
DIVISION IV- Total Tenured	52	25	0	0	77
Total FTE	58.00	50.00	35.00	9.63	152.63
Percent Tenured	90	50	0	0	50
DIVISION V - Total Tenured	4*	0	0	0	4*
Total FTE	3.00	2.00	1.00	1.00	7.00
Percent Tenured	100	0	0	0	43
EDUC SERV - Total Tenured	7	3	0	0	10
Total FTE	9.00	7.00	10.50	11.00	37.50
Percent Tenured	78	43	0	0	27
OTHERS - Total Tenured	1		0	0	1
Total FTE	1.00		1.00	2.00	4.00
Percent Tenured	100		0	0	25

THE FSU FACT BOOK

Comparison of Tenure with Budgeted Lines

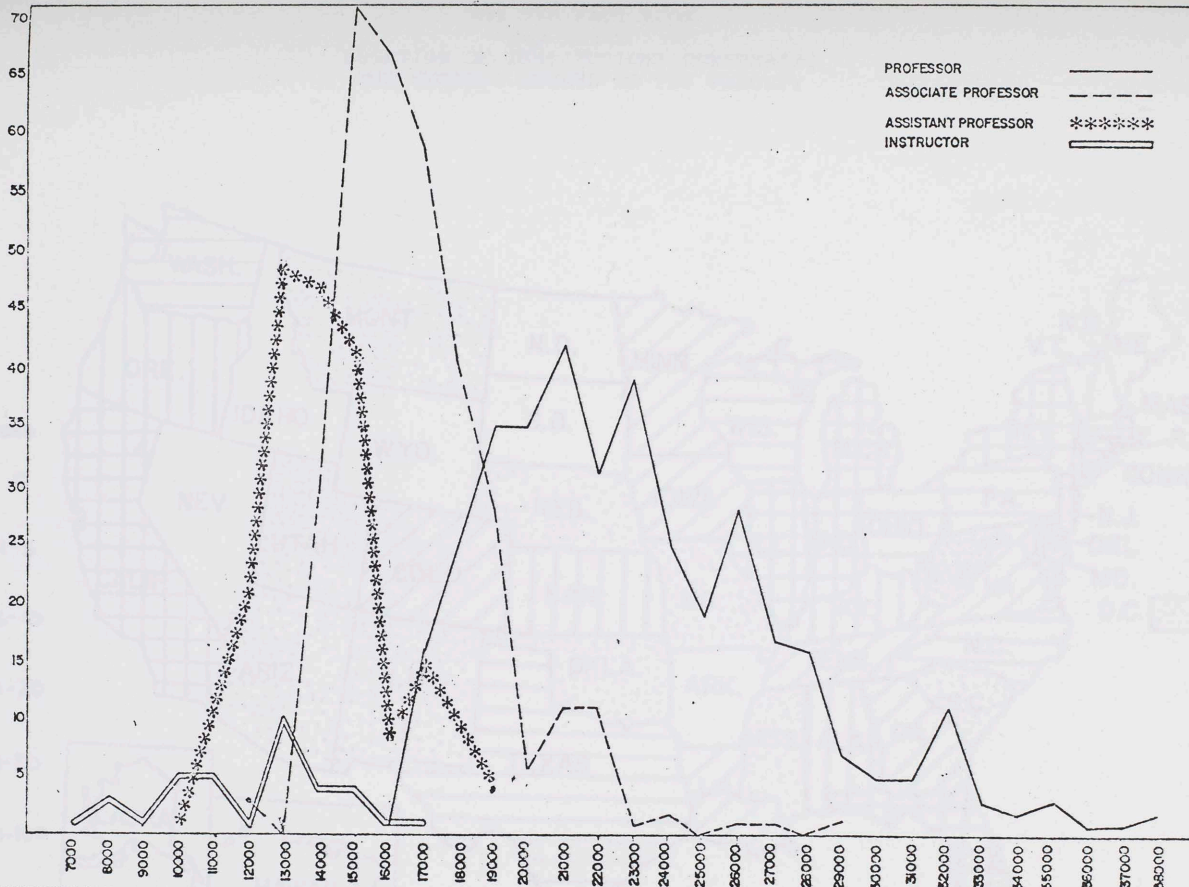
	PROFESSOR	ASSOCIATE PROFESSOR	ASSISTANT PROFESSOR	INSTRUCTORS	ALL RANKS
TOTALS - Total Tenured	374	259	14	0	647
Total FTE	410.50	353.00	244.25	58.38	1066.13
Percent Tenured	91	73	6	0	61

*Includes one tenured faculty member on a grant.

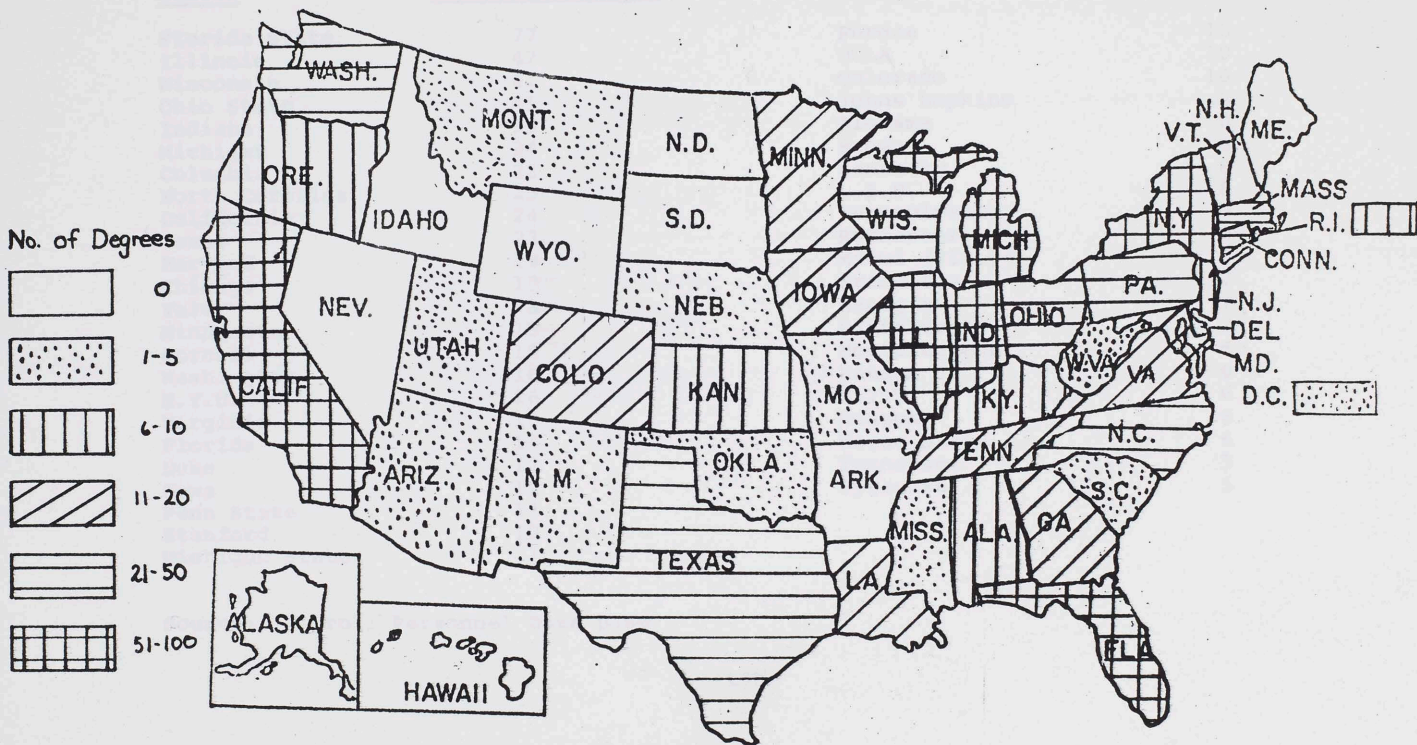
This summary does not include D.R.S. personnel or tenured non-faculty.

Source: Dean of Faculties Office

9 MONTH FACULTY SALARIES FULL TIME BY RANK Table III-7



THE FSU FACT BOOK
 Map III-8
 LOCATION OF INSTITUTIONS CONFERRING
 THE HIGHEST DEGREE TO FSU FACULTY



THE FSU FACT BOOK

INSTITUTIONS PROVIDING FIVE OR MORE RANKED FSU FACULTY MEMBERS
WITH THEIR HIGHEST DEGREE

Table III-9

<u>School</u>	<u>Number of Faculty</u>	<u>School</u>	<u>Number of Faculty</u>
Florida State	77	Purdue	10
Illinois	42	UCLA	10
Wisconsin	41	Colorado	10
Ohio State	41	Johns Hopkins	8
Indiana	39	Alabama	8
Michigan	34	Brown	8
Columbia	32	Kentucky	8
North Carolina	25	L.S.U.	8
California	24	Pennsylvania	8
Texas	23	Rochester	8
Harvard	19	Miami (Fla.)	7
Chicago	19	Princeton	7
Yale	18	Georgia	7
Minnesota	18	Pittsburgh	7
Cornell	18	Northwestern	6
Washington	18	Kansas	6
N.Y.U.	16	M.I.T.	6
Virginia	16	Oregon	6
Florida	14	Wayne State	6
Duke	13	Tennessee	5
Iowa	12	Syracuse	5
Penn State	12		
Stanford	12		
Michigan State	11		

Source: Payroll Personnel Data Base

SECTION IV

This section summarizes financial activity at FSU.

TABLE IV-1. Analysis of Income. This table summarizes major sources of revenue for the last fiscal year.

TABLE IV-2. Analysis of Expenditures. This table summarizes expenditures for the fiscal year 1975-76 by major category of expenditure.

TABLE IV-3. Actual Operating Expenses. This table includes operating expenditures by fund. It does not include Transfers or Research Overhead in Contracts and Grants. In 1975-76 financial statements were prepared on an accrual basis. These accrual adjustments are included except in Auxiliaries, Athletics, and Working Capital because the financial statement did not give out one accrual adjustment for the three funds.

TABLE IV-4. Education and General Budgeted FTEs and Dollars. Lab School positions are reported as A&P in this table.

THE FSU FACT BOOK

Table IV-1

Analysis of Income: Sources of Income by Major Revenue Classification

Sources of Income

1975-76

Educational and General:

Student Tuition and Fees	\$ 12,075,421.42
Government Appropriations - State	39,688,792.67
Grants, Contracts and Gifts - Governmental	18,035,386.13
Grants, Contracts and Gifts - Private	1,493,353.51
Sales and Services of Educational Activities	627,303.23
Other Sources:	
Other	2,016,654.94
Investment Income	4,209.30
Total Educational and General	<u>\$ 73,941,121.20</u>

Auxiliary Enterprises:

Sales and Services - Operations	\$ 14,500,998.15
Other Sources:	
Investment Income	31,254.80
Total Auxiliary Services	<u>\$ 14,532,252.95</u>

Total Current Revenues

\$ 88,473,374.15

Note:

Due to a total reorganization of financial reporting procedures, which took effect in the 1975-76 fiscal year, we have no relevant historical data available for this table.

THE FSU FACT BOOK

Table IV-2
Analysis of Expenditures: Disbursements of Funds by Major Classification

<u>Expenditures and Mandatory Transfers</u>	1975-76
Educational and General:	
Instruction	\$ 26,440,153.56
Research	19,860,576.15
Academic Support	6,912,026.06
Student Services	993,255.43
Institutional Support	7,053,200.89
Operation and Maintenance of Plant	6,828,780.86
Scholarships	2,481,873.54
Public Service	<u>2,395,923.26</u>
Educational and General Expenditures	\$ 72,965,789.75
Auxiliary Enterprises:	
Expenditures	\$ 14,505,452.88
Mandatory Transfers for:	
Principal and Interest	561,432.94
Renewals and Replacements	<u>25,219.28</u>
Total Auxiliary Enterprises	\$ 15,092,105.10
Reversions - State Appropriations	2,054.07
Total Expenditures, Mandatory Transfers and Reversions	<u>\$ 88,059,948.92</u>
Other Transfers and Additions (Deductions):	
Excess of Restricted Receipts over Transfers to Revenues	\$ 1,211,183.03
Non-Mandatory Transfers	<u>\$ (222,702.69)</u>
Total Other Transfers and Additions (Deductions)	\$ 988,480.34
Net Increase (Decrease) in Fund Balances	<u>\$ 1,401,905.57</u>

Note: Due to a total reorganization of financial reporting procedures which took effect in 1975-76 fiscal year, we have no relevant historical data available for this table.

Source: "Financial Report - 1976," University Comptroller

THE FSU FACT BOOK

Table IV-3

ACTUAL OPERATING EXPENDITURES

<u>Operating Expenditures*</u>	<u>1972-73</u>	<u>1973-74</u>	<u>1974-75</u>	<u>1975-76</u>
Extension	535,558	575,001	556,766	508,388
General Revenue/Incidental	45,408,204	49,191,507	51,932,308	51,122,255
Contracts & Grants	13,109,945	13,571,444	15,364,608	15,992,756
Athletics	1,998,890	2,222,631	2,016,802	2,628,847
Auxiliaries	9,178,633	9,230,607	10,157,940	10,388,212
Working Capital	2,045,684	2,580,959	2,144,058	1,914,393
Agency	1,913,979	2,139,158	2,248,951	1,802,697

* From the Financial Statements. FS 195 was used for 1975-76. In 1975-76 accrual statements were prepared. These accrual adjustments are included except for Athletics, Auxiliaries, and Working Capital

THE FSU FACT BOOK

TABLE IV-4

EDUCATION AND GENERAL BUDGETED FTEs AND DOLLARS*

	<u>1972-73</u>	<u>1973-74</u>	<u>1974-75</u>	<u>1975-76</u>	<u>1976-77</u>
9 & 12 Mo. Faculty ¹					
FTE	1162.93	1166.35	1142.01	1083.80	1120.13 ²
Rate	\$18,518,955	19,492,847	20,288,170	19,640,542	21,425,103 ²
Administrative & Professional					
FTE	169.50	182.50	184.50	195.50	138.50
Rate	2,493,773	2,820,099	2,988,084	3,164,521	2,406,612
Career Service					
FTE	1260.52	1277.51	1285.50	1287.50	1283.40
Rate	8,739,859	9,879,634	10,804,913	10,732,975	11,609,673

¹Excludes Summer

²Includes 56.00 FTE in Lab. School at rate of \$883,813, previously reported under the A&P plan

*From the Operating Budget for all years except 1976-77. In this year, a revised operating budget was used after faculty raises and adjustments had been made.

SOURCE: FSU Operating Budgets

SECTION V

The tables in this section of the fact book contain general information about the structure of the University, its leaders and its programs.

TABLE V-1. Presidents of the University Since 1909.

TABLE V-2. Honorary Degrees Conferred. This table lists the persons upon whom the Florida State University has conferred honorary degrees since 1912.

TABLE V-3. Amoco Awards. Three outstanding faculty members are awarded \$1000 prizes each year for excellence in undergraduate teaching through a grant from the AMOCO foundation. The winners are selected from nominees by a joint student-faculty committee.

THE FSU FACT BOOK
TABLE V-1

PRESIDENTS OF THE UNIVERSITY SINCE 1909

Edward Conradi	1909-1941
Doak S. Campbell	1941-1957
Albert B. Martin (Acting President)	1957
Robert M. Strozier	1957-1960
Milton W. Carothers (Acting President)	1960
Gordon W. Blackwell	1960-1965
John E. Champion (Acting President)	1965
John E. Champion	1965-1969
Stanley Marshall (Acting President)	1969
Stanley Marshall	1969-1976
Bernard Sliger	1976-1977
(Interim President)	
Bernard Sliger	1977-

Source: Office of the President, F.S.U.

THE FLORIDA STATE UNIVERSITY
FACT BOOK

TABLE V-2

HONORARY DEGREES CONFERRED

<u>Name</u>	<u>Date of Commencement</u>	<u>Degree</u>
Rowena Longmire	1912	Master of Arts
Ruth Bryan Owen Rhode	1935	Doctor of Laws
Mark Frederick Boyd	1950	Doctor of Science
Henri Bonnet	1950	Doctor of Humane Letters
Wouter Bleeker	1952	Doctor of Science
William Morrison Robinson, Jr.	1955	Doctor of Humanities
Philip Wylie	1956	Doctor of Literature
William George Dodd	1956	Doctor of Literature
Millard Fillmore Caldwell	1956	Doctor of Laws
Spessard Lindsey Holland	1956	Doctor of Laws
LeRoy Collins	1956	Doctor of Laws
Ernst von Dohnanyi	1957	Doctor of Music
George A. Smathers	1957	Doctor of Laws
Doak Sheridan Campbell	1957	Doctor of Laws
J. Velma Keen	1959	Doctor of Laws
Cyril O. Houle	1960	Doctor of Laws

THE FLORIDA STATE UNIVERSITY
FACT BOOK
Honorary Degrees Conferred
Date of

<u>Name</u>	<u>Commencement</u>	<u>Degree</u>
Glenn T. Seaborg	1961	Doctor of Science
Vivian Ahlsweh Williams	1961	Doctor of Literature
Leonard J. Brass	1962	Doctor of Science
Tom B. Swann	1962	Doctor of Laws
Karl Zerbe	1963	Doctor of Fine Arts
Luther H. Hodges	1963	Doctor of Laws
Pablo Casals	1963	Doctor of Music
Farris Bryant	1964	Doctor of Laws
Edwin A. Menninger	1964	Doctor of Science
Dorothy Barclay Thompson	1964	Doctor of Letters
Arthur S. Adams	1965	Doctor of Laws
Robert J. Van de Graaff	1965	Doctor of Science
J. J. Daniel	1965	Doctor of Laws
Lamar Dodd	1968	Doctor of Fine Arts
Robert Shaw	1968	Doctor of Music
Michael E. Debakey	1968	Doctor of Science
Lucious Battle	1969	Doctor of Humane Letters
Andres Segovia	1969	Doctor of Music

THE FLORIDA STATE UNIVERSITY
FACT BOOK
Honorary Degrees Conferred

<u>Name</u>	<u>Date of Commencement</u>	<u>Degree</u>
Audrey Wood Liebling	1970	Doctor of Humane Letters
Nelson Poynter	1970	Doctor of Humane Letters
Paul M. Rudolph	1970	Doctor of Fine Arts
Gregor Piatigorsky	1970	Doctor of Music
Alan S. Boyd	1970	Doctor of Laws
Edwin V. Komarek	1971	Doctor of Science
John Mackay Shaw	1972	Doctor of Humane Letters
Wilbur J. Cohen	1972	Doctor of Humanities
Allen Morris	1973	Doctor of Humane Letters
Julia F. Morton	1973	Doctor of Science
William D. McElroy	1973	Doctor of Science
Karl Dietrich Bracher	1973	Doctor of Humane Letters
William D. McElroy	1973	Doctor of Science
Julia Morton	1973	Doctor of Science

THE FLORIDA STATE UNIVERSITY
FACT BOOK
Honorary Degrees Conferred

<u>Name</u>	<u>Date of Commencement</u>	<u>Degree</u>
Helen Hayes MacArthur	1975	Doctor of Humane Letters
Philip Handler	1975	Doctor of Humanities
King Hussein of Jordan	1975	Doctor of Humane Letters
Chester Ferguson	1976	Doctor of Humane Letters
Stephen C. O'Connell	1976	Doctor of Humane Letters
Lee Strasberg	1977	Doctor of Fine Arts

Source: Office of the President, F.S.U.

THE FSU FACT BOOK

TABLE V-3

AMOCO AWARDS

Standard Oil Foundation Awards for Excellence
in Undergraduate Teaching

1967-68	Homer A. Black Donald Horward Dorothy Schlitt	1967-68 1967-68 1967-68	Business (Accounting) History Science Education
1968-69	Richard M. Baker, Jr. Robert J. Kansky Jo Ann James	1968-69 1968-69 1968-69	Marketing Mathematics Education Modern Languages
1969-70	Harrison Chase William H. Long William H. Heflin	1969-70 1969-70 1969-70	Geography Meteorology Foreign Language Education
1970-71	Azzurra B. Givens Edward K. Mellon Charles T. Wellborn	1970-71 1970-71 1970-71	Modern Languages Chemistry Religion
1971-72	Jerome H. Stern Ronald J. Clark Carolyn Schluck	1971-72 1971-72 1971-72	English Chemistry Elementary Education
1972-73	Joyotpaul Chaudhuri W. W. deGrummond Jeanne Ryan	1972-73 1972-73 1972-73	Government Classics Habilitative Sciences

THE FSU FACT BOOK

Amoco Awards

1973-74

Kay Judkins
John Carey
Marilyn Gombosi

1973-74
1973-74
1973-74

Home Economics
Religion
Music

1974-75

David Ammerman
Janet Burroway
James C. Smith

1974-75
1974-75
1974-75

History
English
Psychology

1975-76

Eugene Crook
Robert C. Morris
Marjorie Sparkman

1975-76
1975-76
1975-76

English
Physics
Nursing

SECTION VI

This section summarizes library statistics at FSU.

TABLE VI-1. Library Statistics. This table provides summary information of library holdings and expenditures.

THE FSU FACT BOOK
Table VI-1
Library Statistics

	1970-71	1971-72	1972-73	1973-74 ^{bd*}	1974-75 ^{bd}	1975-76 ^{bd}
Book Stock	1,003,868 ^c	1,056,403	1,118,349 ^c	1,211,420	1,270,011	1,325,474
Volumes Added (net)	48,071	52,535	61,946	93,071	58,591	55,463
Newspapers ^a	130	130	100	135	142	128
Periodicals & Serials ^a	91,199	9,239	10,509	12,175	12,703	12,152
Staff Salaries (Inc. Student Assts.)	\$1,031,088	\$1,131,769	\$1,328,562	\$1,416,869	1,461,521	1,460,881
Expenditures for Books and Related Materials	429,552	596,045	\$1,481,026	\$1,107,553	1,079,833	920,079
Binding	41,337	75,678	\$ 80,401	\$ 72,885	71,516	61,879
Other Operating Expenditures	\$ 50,270	\$ 48,431	\$ 200,160	\$ 230,173	198,801	128,693
Per Student Total Operating Expenditures (Full FTE)	\$ 94.28	\$ 105.35	\$ 150.31	\$ 148.80	\$ 148.97	\$ 120.25
Ratio of Library Expenditures to University Totals (% of E&G)	3.02%	4.46%	5.54% ^e	5.64% ^e	5% ^{e**}	4%

^a Currently on standing order.

^b Includes microforms counted as follows: 1 reel equal 1 volume; all other microforms counted by the piece and divided by 8

^c Law collection subtracted from the report at this point as being separately budgeted.

^d Law Library figures included.

^e Percentage figure is based on budget allocations, not on actual expenditures.

*E&G exp. taken from "Summary of Estimated Expenditures 1973-74" found in 1973-74 Operating Budget; E&G volume.

** -- 1974-75 Operating Budget E&G volumes.

Source: Office of the Director of Libraries

ARCHIVES
F.S.U. LIBRARY

25